



- 1. Lt. Sky Blue (Sul-R:1165)
- 2. Pastel Yellow-Green (Sul-R:1104)
- 3. Gold (Sul-R:1070)
- 4. (Sul-R:1303)
- 5. Cornsilk (Sul-R:502)
- 6. Chartreuse (Sul-R:1322)
- 7. Grass Green (Sul-R:1049)
- 8. Med. Dk. Ecreu (Sul-R:1054)
- 9. Med. Purple (Sul-R:1032)
- 10. (Sul-R:1303)
- 11. Cornsilk (Sul-R:502)

Viv104pp01
4.18x4.08 inches; 8,261 stitches
11 thread changes; 9 colors




- 1. Peach (Sul-R:1019)
- 2. Hyacinth (Sul-R:1296)
- 3. Golden Yellow (Sul-R:1185)
- 4. Pistachio (Sul-R:1276)
- 5. Dusty Lavender (Sul-R:1254)
- 6. Golden Yellow (Sul-R:1185)
- 7. Turquoise (Sul-R:1095)
- 8. Pastel Yellow-Green (Sul-R:1104)

Viv104pp02
5.10x3.43 inches; 8,248 stitches
8 thread changes; 7 colors




- 1. Coral (Sul-R:1154)
- 2. Spark Gold (Sul-R:1083)
- 3. Med. Purple (Sul-R:1032)
- 4. Avocado (Sul-R:1177)
- 5. Pistachio (Sul-R:1276)
- 6. Lt. Baby Blue (Sul-R:1222)
- 7. Pastel Yellow-Green (Sul-R:1104)

Viv104pp03
4.33x3.10 inches; 6,891 stitches
7 thread changes; 7 colors




- 1. Pistachio (Sul-R:1276)
- 2. Pastel Yellow-Green (Sul-R:1104)
- 3. Peach (Sul-R:1019)
- 4. Cornsilk (Sul-R:502)
- 5. Turquoise (Sul-R:1095)
- 6. Xmas Red (Sul-R:1147)
- 7. Orange Sunrise (Sul-R:1238)
- 8. Chartreuse (Sul-R:1322)
- 9. Lt. Baby Blue (Sul-R:1222)
- 10. Primrose (Sul-R:1066)
- 11. Med. Weathered Blue (Sul-R:1172)
- 12. Lt. Plum (Sul-R:1297)
- 13. Salmon Peach (Sul-R:1259)
- 14. Dk. Ecreu (Sul-R:1128)

Viv104pp04
4.09x3.87 inches; 8,862 stitches
14 thread changes; 14 colors




- 1. Mint Julep (Sul-R:580)
- 2. Sea Foam Green (Sul-R:1207)
- 3. Lt. Coral (Sul-R:1148)
- 4. (Sul-R:1303)
- 5. Avocado (Sul-R:1177)
- 6. Turquoise (Sul-R:1095)
- 7. Pistachio (Sul-R:1276)
- 8. Peach (Sul-R:1019)
- 9. Lime Green (Sul-R:1510)
- 10. Lavender (Sul-R:1193)
- 11. Xmas Red (Sul-R:1147)
- 12. Primrose (Sul-R:1066)
- 13. Tangerine (Sul-R:1078)
- 14. Willow Green (Sul-R:1279)
- 15. Lt. Baby Blue (Sul-R:1222)
- 16. Med. Weathered Blue (Sul-R:1172)
- 17. Lavender (Sul-R:1193)
- 18. Sea Mist (Sul-R:1275)
- 19. Pastel Yellow-Green (Sul-R:1104)
- 20. Cornsilk (Sul-R:502)

Viv104pp05
3.79x4.21 inches; 11,485 stitches
20 thread changes; 19 colors




- 1. Xmas Red (Sul-R:1147)
- 2. True Orange (Sul-R:1168)
- 3. Golden Yellow (Sul-R:1185)
- 4. Deep Chartreuse (Sul-R:1332)
- 5. Lt. Baby Blue (Sul-R:1222)
- 6. Lt. Weathered Blue (Sul-R:1203)
- 7. Lt. Purple (Sul-R:1194)
- 8. Sea Mist (Sul-R:1275)
- 9. Pastel Yellow-Green (Sul-R:1104)
- 10. Peach (Sul-R:1019)
- 11. Cornsilk (Sul-R:502)
- 12. Med. Dk. Ecreu (Sul-R:1054)
- 13. Pistachio (Sul-R:1276)

Viv104pp06
4.09x3.69 inches; 6,264 stitches
13 thread changes; 13 colors



- 1. Cornsilk (Sul-R:502)
- 2. Med. Dk. Ecreu (Sul-R:1054)
- 3. Pistachio (Sul-R:1276)
- 4. Lt. Teal (Sul-R:1045)
- 5. Pastel Jade (Sul-R:1204)
- 6. Sea Mist (Sul-R:1275)
- 7. Chestnut (Sul-R:1217)
- 8. Med. Dk. Ecreu (Sul-R:1054)
- 9. Pastel Yellow-Green (Sul-R:1104)
- 10. Sweet Pink (Sul-R:1256)
- 11. Yellow Orange (Sul-R:1137)

Viv104pp07
3.55x3.85 inches; 6,264 stitches
11 thread changes; 10 colors



- 1. Peach (Sul-R:1019)
- 2. Xmas Red (Sul-R:1147)
- 3. True Orange (Sul-R:1168)
- 4. Golden Yellow (Sul-R:1185)
- 5. Lt. Grass Green (Sul-R:1100)
- 6. Lt. Baby Blue (Sul-R:1222)
- 7. Med. Weathered Blue (Sul-R:1172)
- 8. Dusty Lavender (Sul-R:1254)
- 9. Pistachio (Sul-R:1276)
- 10. (Sul-R:1303)
- 11. Cornsilk (Sul-R:502)
- 12. Med. Blue (Sul-R:1029)
- 13. Golden Yellow (Sul-R:1185)
- 14. Chartreuse (Sul-R:1322)
- 15. Sea Mist (Sul-R:1275)
- 16. Lavender (Sul-R:1193)
- 17. (Sul-R:1262)
- 18. Mazzy Yellow (Sul-R:1167)
- 19. Lt. Baby Blue (Sul-R:1222)
- 20. Pastel Yellow-Green (Sul-R:1104)

Viv104pp08
5.45x2.98 inches; 10,925 stitches
20 thread changes; 18 colors



- 1. Peach (Sul-R:1019)
- 2. Med. Purple (Sul-R:1032)
- 3. Chartreuse (Sul-R:1322)
- 4. Lt. Purple (Sul-R:1194)
- 5. (Sul-R:1282)
- 6. Lt. Baby Blue (Sul-R:1222)
- 7. Cornsilk (Sul-R:502)
- 8. Chartreuse (Sul-R:1322)

Viv104pp09

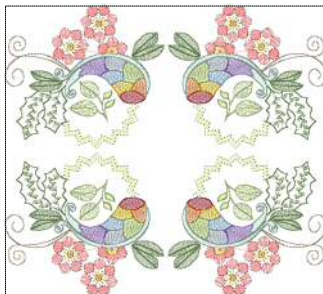
3.94x3.47 inches; 6,753 stitches
8 thread changes; 7 colors



- 1. (Sul-R:1303)
- 2. Chartreuse (Sul-R:1322)
- 3. Xmas Red (Sul-R:1147)
- 4. Tangerine (Sul-R:1078)
- 5. Yellow (Sul-R:1023)
- 6. Chartreuse (Sul-R:1322)
- 7. Pale Powder Blue (Sul-R:1074)
- 8. Nassau Blue (Sul-R:1242)
- 9. Lavender (Sul-R:1193)
- 10. Dk. Rose (Sul-R:1191)
- 11. Bright White (Sul-R:1001)
- 12. Fuchsia (Sul-R:1192)
- 13. Cornsilk (Sul-R:502)
- 14. Pastel Yellow-Green (Sul-R:1104)
- 15. (Sul-R:1303)

Viv104pp10

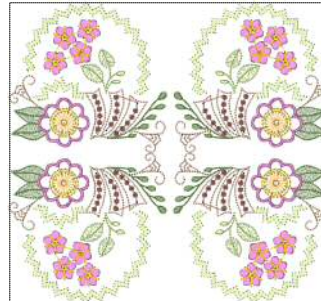
4.13x4.04 inches; 9,472 stitches
15 thread changes; 13 colors



- 1. Xmas Red (Sul-R:1147)
- 2. True Orange (Sul-R:1168)
- 3. Golden Yellow (Sul-R:1185)
- 4. Deep Chartreuse (Sul-R:1332)
- 5. Lt. Baby Blue (Sul-R:1222)
- 6. Lt. Weathered Blue (Sul-R:1203)
- 7. Lt. Purple (Sul-R:1194)
- 8. Sea Mist (Sul-R:1275)
- 9. Peach (Sul-R:1019)
- 10. Pastel Yellow-Green (Sul-R:1104)
- 11. Cornsilk (Sul-R:502)
- 12. Med. Dk. Ecreu (Sul-R:1054)
- 13. Pistachio (Sul-R:1276)

Viv104qp06

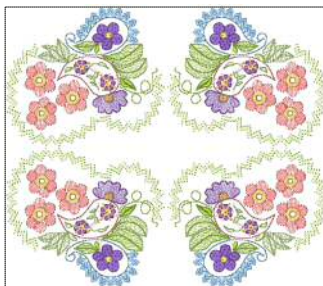
8.30x7.48 inches; 25,052 stitches
13 thread changes; 13 colors



- 1. Cornsilk (Sul-R:502)
- 2. Med. Dk. Ecreu (Sul-R:1054)
- 3. Pistachio (Sul-R:1276)
- 4. Sweet Pink (Sul-R:1256)
- 5. Sea Mist (Sul-R:1275)
- 6. Chestnut (Sul-R:1217)
- 7. Med. Dk. Ecreu (Sul-R:1054)
- 8. Pastel Yellow-Green (Sul-R:1104)
- 9. Spark Gold (Sul-R:1083)

Viv104qp07

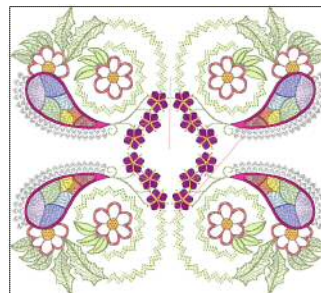
6.86x6.40 inches; 18,125 stitches
9 thread changes; 8 colors



- 1. Peach (Sul-R:1019)
- 2. Med. Purple (Sul-R:1032)
- 3. Lt. Purple (Sul-R:1194)
- 4. (Sul-R:1282)
- 5. Pastel Yellow-Green (Sul-R:1104)
- 6. Pastel Yellow (Sul-R:1135)
- 7. Lt. Baby Blue (Sul-R:1222)
- 8. Cornsilk (Sul-R:502)

Viv104qp09

7.99x7.00 inches; 27,009 stitches
8 thread changes; 8 colors



- 1. (Sul-R:1303)
- 2. Pastel Yellow-Green (Sul-R:1104)
- 3. Fuchsia (Sul-R:1192)
- 4. Xmas Red (Sul-R:1147)
- 5. Tangerine (Sul-R:1078)
- 6. Yellow (Sul-R:1023)
- 7. Chartreuse (Sul-R:1322)
- 8. Pale Powder Blue (Sul-R:1074)
- 9. Nassau Blue (Sul-R:1242)
- 10. Lavender (Sul-R:1193)
- 11. Med. Rose (Sul-R:1231)
- 12. Bright White (Sul-R:1001)
- 13. Cornsilk (Sul-R:502)
- 14. Pastel Yellow-Green (Sul-R:1104)

Viv104qp10

8.37x7.52 inches; 36,215 stitches
14 thread changes; 13 colors



- 1. Coral (Sul-R:1154)
- 2. Spark Gold (Sul-R:1083)
- 3. Pistachio (Sul-R:1276)
- 4. Med. Purple (Sul-R:1032)
- 5. Pastel Yellow-Green (Sul-R:1104)
- 6. Avocado (Sul-R:1177)
- 7. Lt. Baby Blue (Sul-R:1222)
- 8. Pastel Yellow-Green (Sul-R:1104)

Viv104rp03

13.90x5.09 inches; 27,221 stitches
8 thread changes; 7 colors