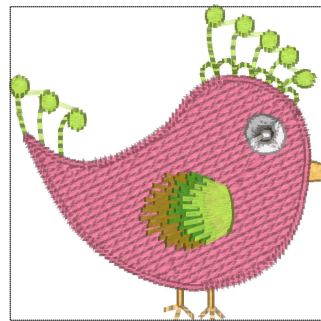


- 1. Primrose (Sul-R:1066)
- 2. Spark Gold (Sul-R:1083)
- 3. Sunset (Sul-R:621)
- 4. Blue Black (Sul-R:1182)
- 5. Cornsilk (Sul-R:502)
- 6. Bright White (Sul-R:1001)
- 7. Cornsilk (Sul-R:502)

**Vivfb001.vp3**

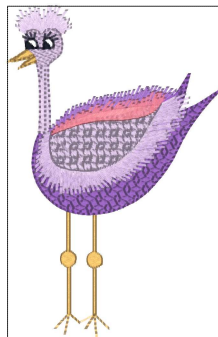
2.49x3.31 inches; 2,422 stitches  
7 thread changes; 6 colors



- 1. Cornsilk (Sul-R:502)
- 2. (Sul-R:1282)
- 3. Coral (Sul-R:1154)
- 4. (Sul-R:1245)
- 5. Grass Green (Sul-R:1049)
- 6. (Sul-R:1282)
- 7. Dark Brown (Sul-R:1130)
- 8. Gray Khaki (Sul-R:1321)
- 9. Bright White (Sul-R:1001)

**Vivfb002.vp3**

2.18x2.13 inches; 3,485 stitches  
9 thread changes; 8 colors



- 1. Cornsilk (Sul-R:502)
- 2. Med. Purple (Sul-R:1032)
- 3. Med. Orchid (Sul-R:1031)
- 4. Med. Purple (Sul-R:1032)
- 5. (Sul-R:1303)
- 6. Med. Orchid (Sul-R:1031)
- 7. Blue Black (Sul-R:1182)
- 8. Cornsilk (Sul-R:502)

**Vivfb003.vp3**

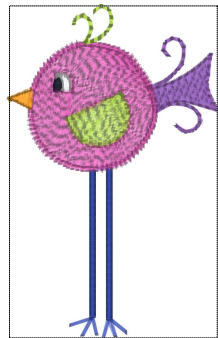
2.94x4.63 inches; 6,878 stitches  
8 thread changes; 5 colors



- 1. Cornsilk (Sul-R:502)
- 2. Cream (Sul-R:1022)
- 3. Med. Taupe (Sul-R:1180)
- 4. Cream (Sul-R:1022)
- 5. Blue Black (Sul-R:1182)
- 6. Cornsilk (Sul-R:502)
- 7. Med. Purple (Sul-R:1032)
- 8. Hot Pink (Sul-R:1109)
- 9. Med. Purple (Sul-R:1032)
- 10. Hot Pink (Sul-R:1109)
- 11. Golden Yellow (Sul-R:1185)
- 12. Cobalt Blue (Sul-R:526)
- 13. Willow Green (Sul-R:1279)
- 14. Pastel Yellow (Sul-R:1135)
- 15. Red Geranium (Sul-R:1188)

**Vivfb004.vp3**

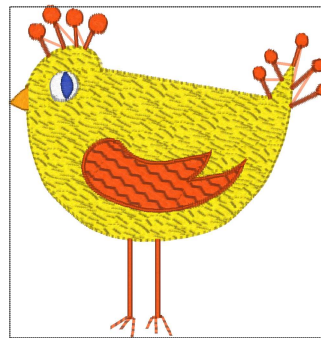
2.96x2.73 inches; 6,120 stitches  
15 thread changes; 11 colors



- 1. Cobalt Blue (Sul-R:526)
- 2. Med. Purple (Sul-R:1032)
- 3. Hot Pink (Sul-R:1109)
- 4. Orange Sunrise (Sul-R:1238)
- 5. Blue Black (Sul-R:1182)
- 6. Bright White (Sul-R:1001)
- 7. (Sul-R:1282)

**Vivfb005.vp3**

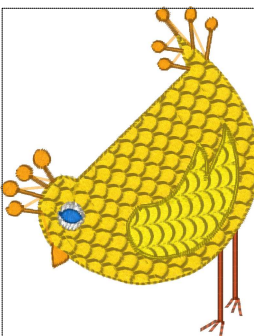
1.78x2.85 inches; 2,157 stitches  
7 thread changes; 7 colors



- 1. Yellow (Sul-R:1023)
- 2. Orange Sunrise (Sul-R:1238)
- 3. Tangerine (Sul-R:1078)
- 4. Bright White (Sul-R:1001)
- 5. Cobalt Blue (Sul-R:526)

**Vivfb006.vp3**

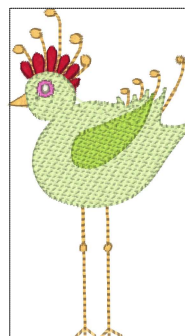
3.52x3.64 inches; 7,907 stitches  
5 thread changes; 5 colors



- 1. Sunset (Sul-R:621)
- 2. Golden Yellow (Sul-R:1185)
- 3. Orange Sunrise (Sul-R:1238)
- 4. Yellow (Sul-R:1023)
- 5. Bright White (Sul-R:1001)
- 6. Dk. Sapphire (Sul-R:1253)

**Vivfb007.vp3**

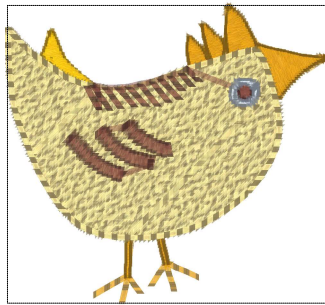
2.78x3.59 inches; 7,137 stitches  
6 thread changes; 6 colors



- 1. Cornsilk (Sul-R:502)
- 2. Xmas Red (Sul-R:1147)
- 3. Pastel Yellow-Green (Sul-R:1104)
- 4. Hot Pink (Sul-R:1109)
- 5. Pale Yellow-Green (Sul-R:1063)
- 6. (Sul-R:1282)

**Vivfb008.vp3**

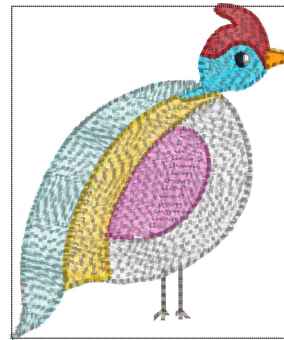
2.05x3.65 inches; 3,554 stitches  
6 thread changes; 6 colors



- 1. Sunflower Gold (Sul-R:1333)
- 2. Goldenrod (Sul-R:1024)
- 3. Gold (Sul-R:1070)
- 4. Chestnut (Sul-R:1217)
- 5. Baby Blue Tint (Sul-R:1223)

**Vivfb009.vp3**

1.74x1.62 inches; 2,644 stitches  
5 thread changes; 5 colors



- 1. Med. Taupe (Sul-R:1180)
- 2. Turquoise (Sul-R:1095)
- 3. Rust (Sul-R:1181)
- 4. Blue Black (Sul-R:1182)
- 5. Orange Sunrise (Sul-R:1238)
- 6. Bright White (Sul-R:1001)
- 7. Silver Gray (Sul-R:1218)
- 8. Lt. Teal (Sul-R:1045)
- 9. Goldenrod (Sul-R:1024)
- 10. Hot Pink (Sul-R:1109)

**Vivfb010.vp3**

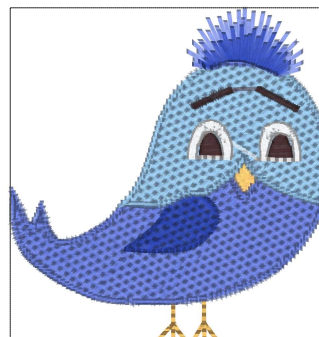
2.25x2.65 inches; 3,625 stitches  
10 thread changes; 10 colors



- 1. Cornsilk (Sul-R:502)
- 2. Dk. Periwinkle (Sul-R:1226)
- 3. Deep Rose (Sul-R:1511)
- 4. Lt. Baby Blue (Sul-R:1222)
- 5. Mahogany (Sul-R:1247)
- 6. Bright White (Sul-R:1001)
- 7. Dk. Periwinkle (Sul-R:1226)
- 8. Deep Rose (Sul-R:1511)

**Vivfb011.vp3**

2.44x2.61 inches; 5,631 stitches  
8 thread changes; 6 colors



- 1. Cornsilk (Sul-R:502)
- 2. Dk. Periwinkle (Sul-R:1226)
- 3. Cobalt Blue (Sul-R:526)
- 4. Lt. Baby Blue (Sul-R:1222)
- 5. Mahogany (Sul-R:1247)
- 6. Bright White (Sul-R:1001)
- 7. Dk. Periwinkle (Sul-R:1226)
- 8. Cobalt Blue (Sul-R:526)

**Vivfb012.vp3**

2.48x2.56 inches; 5,292 stitches  
8 thread changes; 6 colors