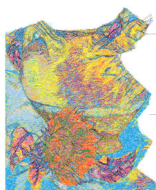




- 1. Blue Black (Sul-R:1182)
- 2. Sapphire (Sul-R:1534)
- 3. Avocado (Sul-R:1177)
- 4. (Sul-R:1319)
- 5. True Orange (Sul-R:1168)
- 6. Mimosa Yellow (Sul-R:1187)
- 7. Med. Steel Gray (Sul-R:1166)
- 8. Hot Pink (Sul-R:1109)
- 9. Cornflower Blue (Sul-R:1249)
- 10.Ivy Green (Sul-R:1277)
- 11.Orange Yellow (Sul-R:1065)
- 12.Hot Pink (Sul-R:1109)
- 13.Peach (Sul-R:1019)
- 14.Eggplant (Sul-R:1302)
- 15.Lt. Avocado (Sul-R:1209)
- 16.Tan (Sul-R:1126)
- 17.Blue Black (Sul-R:1182)
- 18.Sapphire (Sul-R:1534)
- 19.Avocado (Sul-R:1177)
- 20.Dk. Burgundy (Sul-R:1035)

1.dst

7.30x10.03 inches; 141,629 stitches
20 thread changes; 16 colors



- 1. Blue Black (Sul-R:1182)
- 2. Sapphire (Sul-R:1534)
- 3. Avocado (Sul-R:1177)
- 4. (Sul-R:1319)
- 5. True Orange (Sul-R:1168)
- 6. Mimosa Yellow (Sul-R:1187)
- 7. Med. Steel Gray (Sul-R:1166)
- 8. Hot Pink (Sul-R:1109)
- 9. Cornflower Blue (Sul-R:1249)
- 10.Ivy Green (Sul-R:1277)
- 11.Orange Yellow (Sul-R:1065)
- 12.Hot Pink (Sul-R:1109)
- 13.Peach (Sul-R:1019)
- 14.Eggplant (Sul-R:1302)
- 15.Lt. Avocado (Sul-R:1209)
- 16.Tan (Sul-R:1126)
- 17.Blue Black (Sul-R:1182)
- 18.Sapphire (Sul-R:1534)
- 19.Avocado (Sul-R:1177)
- 20.Dk. Burgundy (Sul-R:1035)

2.dst

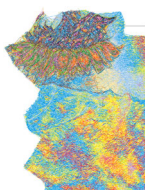
7.30x9.01 inches; 106,095 stitches
20 thread changes; 16 colors



- 1. Blue Black (Sul-R:1182)
- 2. Sapphire (Sul-R:1534)
- 3. Avocado (Sul-R:1177)
- 4. (Sul-R:1319)
- 5. True Orange (Sul-R:1168)
- 6. Mimosa Yellow (Sul-R:1187)
- 7. Med. Steel Gray (Sul-R:1166)
- 8. Hot Pink (Sul-R:1109)
- 9. Cornflower Blue (Sul-R:1249)
- 10.Ivy Green (Sul-R:1277)
- 11.Orange Yellow (Sul-R:1065)
- 12.Hot Pink (Sul-R:1109)
- 13.Peach (Sul-R:1019)
- 14.Eggplant (Sul-R:1302)
- 15.Lt. Avocado (Sul-R:1209)
- 16.Tan (Sul-R:1126)
- 17.Blue Black (Sul-R:1182)
- 18.Sapphire (Sul-R:1534)
- 19.Avocado (Sul-R:1177)
- 20.Dk. Burgundy (Sul-R:1035)

3.dst

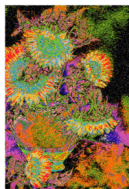
5.93x10.56 inches; 90,804 stitches
20 thread changes; 16 colors



- 1. Blue Black (Sul-R:1182)
- 2. Sapphire (Sul-R:1534)
- 3. Avocado (Sul-R:1177)
- 4. (Sul-R:1319)
- 5. True Orange (Sul-R:1168)
- 6. Mimosa Yellow (Sul-R:1187)
- 7. Med. Steel Gray (Sul-R:1166)
- 8. Hot Pink (Sul-R:1109)
- 9. Cornflower Blue (Sul-R:1249)
- 10.Ivy Green (Sul-R:1277)
- 11.Orange Yellow (Sul-R:1065)
- 12.Hot Pink (Sul-R:1109)
- 13.Peach (Sul-R:1019)
- 14.Eggplant (Sul-R:1302)
- 15.Lt. Avocado (Sul-R:1209)
- 16.Tan (Sul-R:1126)
- 17.Blue Black (Sul-R:1182)
- 18.Sapphire (Sul-R:1534)
- 19.Avocado (Sul-R:1177)
- 20.Dk. Burgundy (Sul-R:1035)

4.dst

6.51x8.56 inches; 81,711 stitches
20 thread changes; 16 colors



- 1. Blue Black (Sul-R:1182)
- 2. Sapphire (Sul-R:1534)
- 3. Avocado (Sul-R:1177)
- 4. (Sul-R:1319)
- 5. True Orange (Sul-R:1168)
- 6. Mimosa Yellow (Sul-R:1187)
- 7. Med. Steel Gray (Sul-R:1166)
- 8. Hot Pink (Sul-R:1109)
- 9. Cornflower Blue (Sul-R:1249)
- 10.Ivy Green (Sul-R:1277)
- 11.Orange Yellow (Sul-R:1065)
- 12.Hot Pink (Sul-R:1109)
- 13.Peach (Sul-R:1019)
- 14.Eggplant (Sul-R:1302)
- 15.Lt. Avocado (Sul-R:1209)
- 16.Tan (Sul-R:1126)
- 17.Blue Black (Sul-R:1182)
- 18.Sapphire (Sul-R:1534)
- 19.Avocado (Sul-R:1177)

Sunflowers .dst

11.81x17.74 inches; 415,252 stitches
19 thread changes; 15 colors



- 1. RGB(0,0,255) (RGB:1)
- 2. RGB(255,244,244) (RGB:2)
- 3. RGB(132,130,132) (RGB:3)
- 4. RGB(255,247,156) (RGB:4)
- 5. RGB(253,240,0) (RGB:5)
- 6. RGB(230,216,177) (RGB:6)
- 7. RGB(255,155,55) (RGB:7)
- 8. RGB(178,221,83) (RGB:8)
- 9. RGB(194,228,237) (RGB:9)
- 10. RGB(255,83,0) (RGB:10)
- 11. RGB(201,164,128) (RGB:11)
- 12. RGB(198,170,66) (RGB:12)
- 13. RGB(127,194,28) (RGB:13)
- 14. RGB(114,126,71) (RGB:14)
- 15. RGB(108,182,255) (RGB:15)
- 16. RGB(160,158,160) (RGB:16)
- 17. RGB(61,69,14) (RGB:17)
- 18. RGB(26,71,37) (RGB:18)
- 19. RGB(107,36,8) (RGB:19)
- 20. RGB(21,0,0) (RGB:20)

1.exp

7.30x10.03 inches; 141,629 stitches
20 thread changes; 20 colors



- 1. RGB(0,0,255) (RGB:1)
- 2. RGB(255,244,244) (RGB:2)
- 3. RGB(132,130,132) (RGB:3)
- 4. RGB(255,247,156) (RGB:4)
- 5. RGB(253,240,0) (RGB:5)
- 6. RGB(230,216,177) (RGB:6)
- 7. RGB(255,155,55) (RGB:7)
- 8. RGB(178,221,83) (RGB:8)
- 9. RGB(194,228,237) (RGB:9)
- 10. RGB(255,83,0) (RGB:10)
- 11. RGB(201,164,128) (RGB:11)
- 12. RGB(198,170,66) (RGB:12)
- 13. RGB(127,194,28) (RGB:13)
- 14. RGB(114,126,71) (RGB:14)
- 15. RGB(108,182,255) (RGB:15)
- 16. RGB(160,158,160) (RGB:16)
- 17. RGB(61,69,14) (RGB:17)
- 18. RGB(26,71,37) (RGB:18)
- 19. RGB(107,36,8) (RGB:19)
- 20. RGB(21,0,0) (RGB:20)

2.exp

7.30x9.01 inches; 106,095 stitches
20 thread changes; 20 colors



- 1. RGB(0,0,255) (RGB:1)
- 2. RGB(255,244,244) (RGB:2)
- 3. RGB(132,130,132) (RGB:3)
- 4. RGB(255,247,156) (RGB:4)
- 5. RGB(253,240,0) (RGB:5)
- 6. RGB(230,216,177) (RGB:6)
- 7. RGB(255,155,55) (RGB:7)
- 8. RGB(178,221,83) (RGB:8)
- 9. RGB(194,228,237) (RGB:9)
- 10. RGB(255,83,0) (RGB:10)
- 11. RGB(201,164,128) (RGB:11)
- 12. RGB(198,170,66) (RGB:12)
- 13. RGB(127,194,28) (RGB:13)
- 14. RGB(114,126,71) (RGB:14)
- 15. RGB(108,182,255) (RGB:15)
- 16. RGB(160,158,160) (RGB:16)
- 17. RGB(61,69,14) (RGB:17)
- 18. RGB(26,71,37) (RGB:18)
- 19. RGB(107,36,8) (RGB:19)
- 20. RGB(21,0,0) (RGB:20)

3.exp

5.93x10.56 inches; 90,804 stitches
20 thread changes; 20 colors



- 1. RGB(0,0,255) (RGB:1)
- 2. RGB(255,244,244) (RGB:2)
- 3. RGB(132,130,132) (RGB:3)
- 4. RGB(255,247,156) (RGB:4)
- 5. RGB(253,240,0) (RGB:5)
- 6. RGB(230,216,177) (RGB:6)
- 7. RGB(255,155,55) (RGB:7)
- 8. RGB(178,221,83) (RGB:8)
- 9. RGB(194,228,237) (RGB:9)
- 10. RGB(255,83,0) (RGB:10)
- 11. RGB(201,164,128) (RGB:11)
- 12. RGB(198,170,66) (RGB:12)
- 13. RGB(127,194,28) (RGB:13)
- 14. RGB(114,126,71) (RGB:14)
- 15. RGB(108,182,255) (RGB:15)
- 16. RGB(160,158,160) (RGB:16)
- 17. RGB(61,69,14) (RGB:17)
- 18. RGB(26,71,37) (RGB:18)
- 19. RGB(107,36,8) (RGB:19)
- 20. RGB(21,0,0) (RGB:20)

4.exp

6.51x8.56 inches; 81,711 stitches
20 thread changes; 20 colors



- 1. RGB(255,244,244) (RGB:1)
- 2. RGB(132,130,132) (RGB:2)
- 3. RGB(255,247,156) (RGB:3)
- 4. RGB(253,240,0) (RGB:4)
- 5. RGB(230,216,177) (RGB:5)
- 6. RGB(255,155,55) (RGB:6)
- 7. RGB(178,221,83) (RGB:7)
- 8. RGB(194,228,237) (RGB:8)
- 9. RGB(255,83,0) (RGB:9)
- 10. RGB(201,164,128) (RGB:10)
- 11. RGB(198,170,66) (RGB:11)
- 12. RGB(127,194,28) (RGB:12)
- 13. RGB(114,126,71) (RGB:13)
- 14. RGB(108,182,255) (RGB:14)
- 15. RGB(160,158,160) (RGB:15)
- 16. RGB(61,69,14) (RGB:16)
- 17. RGB(26,71,37) (RGB:17)
- 18. RGB(107,36,8) (RGB:18)
- 19. RGB(21,0,0) (RGB:19)

Sunflowers .exp

11.81x17.74 inches; 415,252 stitches
19 thread changes; 19 colors



- 1. Blue
- 2. White
- 3. Grey
- 4. Light Yellow
- 5. Yellow
- 6. Light Grey
- 7. Light Orange
- 8. Dark Yellow
- 9. Light Grey
- 10. Dark Orange
- 11. Light Red
- 12. Light Orange
- 13. Dark Yellow
- 14. Grey
- 15. Light Grey
- 16. Grey
- 17. Dark Grey
- 18. Dark Grey
- 19. Dark Brown
- 20. Black

1.hus

7.30x10.03 inches; 141,629 stitches
20 thread changes; 13 colors



- 1. Blue
- 2. White
- 3. Grey
- 4. Light Yellow
- 5. Yellow
- 6. Light Grey
- 7. Light Orange
- 8. Dark Yellow
- 9. Light Grey
- 10. Dark Orange
- 11. Light Red
- 12. Light Orange
- 13. Dark Yellow
- 14. Grey
- 15. Light Grey
- 16. Grey
- 17. Dark Grey
- 18. Dark Grey
- 19. Dark Brown
- 20. Black

2.hus

7.30x9.01 inches; 106,095 stitches
20 thread changes; 13 colors



- 1. Blue
- 2. White
- 3. Grey
- 4. Light Yellow
- 5. Yellow
- 6. Light Grey
- 7. Light Orange
- 8. Dark Yellow
- 9. Light Grey
- 10. Dark Orange
- 11. Light Red
- 12. Light Orange
- 13. Dark Yellow
- 14. Grey
- 15. Light Grey
- 16. Grey
- 17. Dark Grey
- 18. Dark Grey
- 19. Dark Brown
- 20. Black

3.hus

5.93x10.56 inches; 90,804 stitches
20 thread changes; 13 colors



- 1. Blue
- 2. White
- 3. Grey
- 4. Light Yellow
- 5. Yellow
- 6. Light Grey
- 7. Light Orange
- 8. Dark Yellow
- 9. Light Grey
- 10. Dark Orange
- 11. Light Red
- 12. Light Orange
- 13. Dark Yellow
- 14. Grey
- 15. Light Grey
- 16. Grey
- 17. Dark Grey
- 18. Dark Grey
- 19. Dark Brown
- 20. Black

4.hus

6.51x8.56 inches; 81,711 stitches
20 thread changes; 13 colors



- 1. White
- 2. Grey
- 3. Light Yellow
- 4. Yellow
- 5. Light Grey
- 6. Light Orange
- 7. Dark Yellow
- 8. Light Grey
- 9. Dark Orange
- 10. Light Red
- 11. Light Orange
- 12. Dark Yellow
- 13. Grey
- 14. Light Grey
- 15. Grey
- 16. Dark Grey
- 17. Dark Grey
- 18. Dark Brown
- 19. Black

Sunflowers .hus

11.81x17.74 inches; 415,252 stitches
19 thread changes; 12 colors



- 1. Blue Ink (262)
- 2. White (001)
- 3. Gray (221)
- 4. Mustard (270)
- 5. Yellow (204)
- 6. Beige (213)
- 7. Toast (255)
- 8. Gold (003)
- 9. Baby Blue (228)
- 10. Orange (203)
- 11. Cinnamon (236)
- 12. Old Gold (272)
- 13. Yellow Green (218)
- 14. Moss Green (246)
- 15. Bright Blue (230)
- 16. Gray (221)
- 17. Olive Green (219)
- 18. Dark Green (248)
- 19. Dark Sepia (260)
- 20. Black (002)

1.jef

7.30x10.03 inches; 141,650 stitches
20 thread changes; 19 colors



- 1. Blue Ink (262)
- 2. White (001)
- 3. Gray (221)
- 4. Mustard (270)
- 5. Yellow (204)
- 6. Beige (213)
- 7. Toast (255)
- 8. Gold (003)
- 9. Baby Blue (228)
- 10. Orange (203)
- 11. Cinnamon (236)
- 12. Old Gold (272)
- 13. Yellow Green (218)
- 14. Moss Green (246)
- 15. Bright Blue (230)
- 16. Gray (221)
- 17. Olive Green (219)
- 18. Dark Green (248)
- 19. Dark Sepia (260)
- 20. Black (002)

2.jef

7.30x9.01 inches; 106,116 stitches
20 thread changes; 19 colors



- 1. Blue Ink (262)
- 2. White (001)
- 3. Gray (221)
- 4. Mustard (270)
- 5. Yellow (204)
- 6. Beige (213)
- 7. Toast (255)
- 8. Gold (003)
- 9. Baby Blue (228)
- 10. Orange (203)
- 11. Cinnamon (236)
- 12. Old Gold (272)
- 13. Yellow Green (218)
- 14. Moss Green (246)
- 15. Bright Blue (230)
- 16. Gray (221)
- 17. Olive Green (219)
- 18. Dark Green (248)
- 19. Dark Sepia (260)
- 20. Black (002)

3.jef

5.93x10.56 inches; 90,825 stitches
20 thread changes; 19 colors



- 1. Blue Ink (262)
- 2. White (001)
- 3. Gray (221)
- 4. Mustard (270)
- 5. Yellow (204)
- 6. Beige (213)
- 7. Toast (255)
- 8. Gold (003)
- 9. Baby Blue (228)
- 10. Orange (203)
- 11. Cinnamon (236)
- 12. Old Gold (272)
- 13. Yellow Green (218)
- 14. Moss Green (246)
- 15. Bright Blue (230)
- 16. Gray (221)
- 17. Olive Green (219)
- 18. Dark Green (248)
- 19. Dark Sepia (260)
- 20. Black (002)

4.jef

6.51x8.56 inches; 81,732 stitches
20 thread changes; 19 colors



- 1. White (001)
- 2. Gray (221)
- 3. Mustard (270)
- 4. Yellow (204)
- 5. Beige (213)
- 6. Toast (255)
- 7. Gold (003)
- 8. Baby Blue (228)
- 9. Orange (203)
- 10. Cinnamon (236)
- 11. Old Gold (272)
- 12. Yellow Green (218)
- 13. Moss Green (246)
- 14. Bright Blue (230)
- 15. Gray (221)
- 16. Olive Green (219)
- 17. Dark Green (248)
- 18. Dark Sepia (260)
- 19. Black (002)

Sunflowers .jef

11.81x17.74 inches; 415,270 stitches
19 thread changes; 18 colors



- 1. Blue Ink (262)
- 2. White (001)
- 3. Gray (221)
- 4. Mustard (270)
- 5. Yellow (204)
- 6. Beige (213)
- 7. Toast (255)
- 8. Gold (003)
- 9. Baby Blue (228)
- 10. Orange (203)
- 11. Cinnamon (236)
- 12. Old Gold (272)
- 13. Yellow Green (218)
- 14. Moss Green (246)
- 15. Bright Blue (230)
- 16. Gray (221)
- 17. Olive Green (219)
- 18. Dark Green (248)
- 19. Dark Sepia (260)
- 20. Black (002)

1.jef+

7.30x10.03 inches; 141,650 stitches
20 thread changes; 19 colors



- 1. Blue Ink (262)
- 2. White (001)
- 3. Gray (221)
- 4. Mustard (270)
- 5. Yellow (204)
- 6. Beige (213)
- 7. Toast (255)
- 8. Gold (003)
- 9. Baby Blue (228)
- 10. Orange (203)
- 11. Cinnamon (236)
- 12. Old Gold (272)
- 13. Yellow Green (218)
- 14. Moss Green (246)
- 15. Bright Blue (230)
- 16. Gray (221)
- 17. Olive Green (219)
- 18. Dark Green (248)
- 19. Dark Sepia (260)
- 20. Black (002)

2.jef+

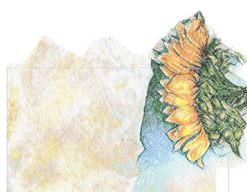
9.01x7.30 inches; 106,116 stitches
20 thread changes; 19 colors



- 1. Blue Ink (262)
- 2. White (001)
- 3. Gray (221)
- 4. Mustard (270)
- 5. Yellow (204)
- 6. Beige (213)
- 7. Toast (255)
- 8. Gold (003)
- 9. Baby Blue (228)
- 10. Orange (203)
- 11. Cinnamon (236)
- 12. Old Gold (272)
- 13. Yellow Green (218)
- 14. Moss Green (246)
- 15. Bright Blue (230)
- 16. Gray (221)
- 17. Olive Green (219)
- 18. Dark Green (248)
- 19. Dark Sepia (260)
- 20. Black (002)

3.jef+

5.93x10.56 inches; 90,825 stitches
20 thread changes; 19 colors



- 1. Blue Ink (262)
- 2. White (001)
- 3. Gray (221)
- 4. Mustard (270)
- 5. Yellow (204)
- 6. Beige (213)
- 7. Toast (255)
- 8. Gold (003)
- 9. Baby Blue (228)
- 10. Orange (203)
- 11. Cinnamon (236)
- 12. Old Gold (272)
- 13. Yellow Green (218)
- 14. Moss Green (246)
- 15. Bright Blue (230)
- 16. Gray (221)
- 17. Olive Green (219)
- 18. Dark Green (248)
- 19. Dark Sepia (260)
- 20. Black (002)

4.jef+

8.56x6.51 inches; 81,732 stitches
20 thread changes; 19 colors



- 1. White (001)
- 2. Gray (221)
- 3. Mustard (270)
- 4. Yellow (204)
- 5. Beige (213)
- 6. Toast (255)
- 7. Gold (003)
- 8. Baby Blue (228)
- 9. Orange (203)
- 10. Cinnamon (236)
- 11. Old Gold (272)
- 12. Yellow Green (218)
- 13. Moss Green (246)
- 14. Bright Blue (230)
- 15. Gray (221)
- 16. Olive Green (219)
- 17. Dark Green (248)
- 18. Dark Sepia (260)
- 19. Black (002)

Sunflowers .jef+

11.81x17.74 inches; 415,270 stitches
19 thread changes; 18 colors



- 1. Ultramarine ■ 8. Fresh Green ■ 15. Sky Blue
- 2. White ■ 9. Light Blue ■ 16. Gray
- 3. Pewter ■ 10. Vermilion ■ 17. Dark Brown
- 4. Cream Brown ■ 11. Silver ■ 18. Peacock Blue
- 5. Yellow ■ 12. Brass ■ 19. Dark Brown
- 6. Beige ■ 13. Lime Green ■ 20. Black
- 7. Deep Gold ■ 14. Dark Gray

1.pec

7.30x10.03 inches; 142,212 stitches
20 thread changes; 19 colors



- 1. Ultramarine ■ 8. Fresh Green ■ 15. Sky Blue
- 2. White ■ 9. Light Blue ■ 16. Gray
- 3. Pewter ■ 10. Vermilion ■ 17. Dark Brown
- 4. Cream Brown ■ 11. Silver ■ 18. Peacock Blue
- 5. Yellow ■ 12. Brass ■ 19. Dark Brown
- 6. Beige ■ 13. Lime Green ■ 20. Black
- 7. Deep Gold ■ 14. Dark Gray

2.pec

7.30x9.01 inches; 106,557 stitches
20 thread changes; 19 colors



- 1. Ultramarine ■ 8. Fresh Green ■ 15. Sky Blue
- 2. White ■ 9. Light Blue ■ 16. Gray
- 3. Pewter ■ 10. Vermilion ■ 17. Dark Brown
- 4. Cream Brown ■ 11. Silver ■ 18. Peacock Blue
- 5. Yellow ■ 12. Brass ■ 19. Dark Brown
- 6. Beige ■ 13. Lime Green ■ 20. Black
- 7. Deep Gold ■ 14. Dark Gray

3.pec

5.93x10.56 inches; 91,107 stitches
20 thread changes; 19 colors



- 1. Ultramarine ■ 8. Fresh Green ■ 15. Sky Blue
- 2. White ■ 9. Light Blue ■ 16. Gray
- 3. Pewter ■ 10. Vermilion ■ 17. Dark Brown
- 4. Cream Brown ■ 11. Silver ■ 18. Peacock Blue
- 5. Yellow ■ 12. Brass ■ 19. Dark Brown
- 6. Beige ■ 13. Lime Green ■ 20. Black
- 7. Deep Gold ■ 14. Dark Gray

4.pec

6.51x8.56 inches; 82,025 stitches
20 thread changes; 19 colors



- 1. White ■ 8. Light Blue ■ 15. Gray
- 2. Pewter ■ 9. Vermilion ■ 16. Dark Brown
- 3. Cream Brown ■ 10. Silver ■ 17. Peacock Blue
- 4. Yellow ■ 11. Brass ■ 18. Dark Brown
- 5. Beige ■ 12. Lime Green ■ 19. Black
- 6. Deep Gold ■ 13. Dark Gray
- 7. Fresh Green ■ 14. Sky Blue

Sunflowers .pec

11.82x15.12 inches; 416,331 stitches
19 thread changes; 18 colors



- 1. Ultramarine
- 2. White
- 3. Pewter
- 4. Cream Brown
- 5. Yellow
- 6. Beige
- 7. Deep Gold
- 8. Fresh Green
- 9. Light Blue
- 10. Vermilion
- 11. Silver
- 12. Brass
- 13. Lime Green
- 14. Dark Gray
- 15. Sky Blue
- 16. Gray
- 17. Dark Brown
- 18. Peacock Blue
- 19. Dark Brown
- 20. Black

1.pes

10.03x7.30 inches; 142,212 stitches
20 thread changes; 19 colors



- 1. Cobalt Blue (Sul-R:526)
- 2. Pale Sea Foam (Sul-R:1086)
- 3. (Sul-R:610)
- 4. Primrose (Sul-R:1066)
- 5. Mimosa Yellow (Sul-R:1187)
- 6. Med. Ecru (Sul-R:1127)
- 7. Apricot (Sul-R:1239)
- 8. Deep Chartreuse (Sul-R:1332)
- 9. Baby Blue Tint (Sul-R:1223)
- 10. (Sul-R:1315)
- 11. Dk. Ecru (Sul-R:1128)
- 12. (Sul-R:1260)
- 13. Avocado (Sul-R:1177)
- 14. Moss Green (Sul-R:630)
- 15. Cornflower Blue (Sul-R:1249)
- 16. Dk. Gray Khaki (Sul-R:1270)
- 17. Med. Army Green (Sul-R:1173)
- 18. Dk. Pine Green (Sul-R:1174)
- 19. Wine (Sul-R:1312)
- 20.4 (Sul-R:1324)

1.vip

7.30x10.03 inches; 141,629 stitches
20 thread changes; 20 colors



- 1. Ultramarine
- 2. White
- 3. Pewter
- 4. Cream Brown
- 5. Yellow
- 6. Beige
- 7. Deep Gold
- 8. Fresh Green
- 9. Light Blue
- 10. Vermilion
- 11. Silver
- 12. Brass
- 13. Lime Green
- 14. Dark Gray
- 15. Sky Blue
- 16. Gray
- 17. Dark Brown
- 18. Peacock Blue
- 19. Dark Brown
- 20. Black

2.pes

9.01x7.30 inches; 106,557 stitches
20 thread changes; 19 colors



- 1. Ultramarine
- 2. White
- 3. Pewter
- 4. Cream Brown
- 5. Yellow
- 6. Beige
- 7. Deep Gold
- 8. Fresh Green
- 9. Light Blue
- 10. Vermilion
- 11. Silver
- 12. Brass
- 13. Lime Green
- 14. Dark Gray
- 15. Sky Blue
- 16. Gray
- 17. Dark Brown
- 18. Peacock Blue
- 19. Dark Brown
- 20. Black

3.pes

10.56x5.93 inches; 91,107 stitches
20 thread changes; 19 colors



- 1. Ultramarine
- 2. White
- 3. Pewter
- 4. Cream Brown
- 5. Yellow
- 6. Beige
- 7. Deep Gold
- 8. Fresh Green
- 9. Light Blue
- 10. Vermilion
- 11. Silver
- 12. Brass
- 13. Lime Green
- 14. Dark Gray
- 15. Sky Blue
- 16. Gray
- 17. Dark Brown
- 18. Peacock Blue
- 19. Dark Brown
- 20. Black

4.pes

8.56x6.51 inches; 82,025 stitches
20 thread changes; 19 colors



- 1. White
- 2. Pewter
- 3. Cream Brown
- 4. Yellow
- 5. Beige
- 6. Deep Gold
- 7. Fresh Green
- 8. Light Blue
- 9. Vermilion
- 10. Silver
- 11. Brass
- 12. Lime Green
- 13. Dark Gray
- 14. Sky Blue
- 15. Gray
- 16. Dark Brown
- 17. Peacock Blue
- 18. Dark Brown
- 19. Black

Sunflowers .pes

11.82x15.12 inches; 416,331 stitches
19 thread changes; 18 colors



- | | | |
|----------------|-----------------|------------------|
| 1. White | 8. Light Blue | 15.Gray |
| 2. Pewter | 9. Vermilion | 16.Deep Green |
| 3. Cream Brown | 10.Russet Brown | 17.Emerald Green |
| 4. Yellow | 11.Brass | 18.Dark Brown |
| 5. Beige | 12.Lime Green | 19.Black |
| 6. Clay Brown | 13.Olive Green | |
| 7. Fresh Green | 14.Sky Blue | |

Sunflowers.pes

12.99x15.12 inches; 416,314 stitches
19 thread changes; 19 colors



- 1. Cobalt Blue (Sul-R:526)
- 2. Pale Sea Foam (Sul-R:1086)
- 3. (Sul-R:610)
- 4. Primrose (Sul-R:1066)
- 5. Mimosa Yellow (Sul-R:1187)
- 6. Med. Ecru (Sul-R:1127)
- 7. Apricot (Sul-R:1239)
- 8. Deep Chartreuse (Sul-R:1332)
- 9. Baby Blue Tint (Sul-R:1223)
- 10. (Sul-R:1315)
- 11.Dk. Ecru (Sul-R:1128)
- 12. (Sul-R:1260)
- 13.Avocado (Sul-R:1177)
- 14.Moss Green (Sul-R:630)
- 15.Cornflower Blue (Sul-R:1249)
- 16.Dk. Gray Khaki (Sul-R:1270)
- 17.Med. Army Green (Sul-R:1173)
- 18.Dk. Pine Green (Sul-R:1174)
- 19.Wine (Sul-R:1312)
- 20.4 (Sul-R:1324)

2.vip

7.30x9.01 inches; 106,095 stitches
20 thread changes; 20 colors



- 1. Cobalt Blue (Sul-R:526)
- 2. Pale Sea Foam (Sul-R:1086)
- 3. (Sul-R:610)
- 4. Primrose (Sul-R:1066)
- 5. Mimosa Yellow (Sul-R:1187)
- 6. Med. Ecru (Sul-R:1127)
- 7. Apricot (Sul-R:1239)
- 8. Deep Chartreuse (Sul-R:1332)
- 9. Baby Blue Tint (Sul-R:1223)
- 10. (Sul-R:1315)
- 11.Dk. Ecru (Sul-R:1128)
- 12. (Sul-R:1260)
- 13.Avocado (Sul-R:1177)
- 14.Moss Green (Sul-R:630)
- 15.Cornflower Blue (Sul-R:1249)
- 16.Dk. Gray Khaki (Sul-R:1270)
- 17.Med. Army Green (Sul-R:1173)
- 18.Dk. Pine Green (Sul-R:1174)
- 19.Wine (Sul-R:1312)
- 20.4 (Sul-R:1324)

3.vip

5.93x10.56 inches; 90,804 stitches
20 thread changes; 20 colors



- 1. Cobalt Blue (Sul-R:526)
- 2. Pale Sea Foam (Sul-R:1086)
- 3. (Sul-R:610)
- 4. Primrose (Sul-R:1066)
- 5. Mimosa Yellow (Sul-R:1187)
- 6. Med. Ecru (Sul-R:1127)
- 7. Apricot (Sul-R:1239)
- 8. Deep Chartreuse (Sul-R:1332)
- 9. Baby Blue Tint (Sul-R:1223)
- 10. (Sul-R:1315)
- 11.Dk. Ecru (Sul-R:1128)
- 12. (Sul-R:1260)
- 13.Avocado (Sul-R:1177)
- 14.Moss Green (Sul-R:630)
- 15.Cornflower Blue (Sul-R:1249)
- 16.Dk. Gray Khaki (Sul-R:1270)
- 17.Med. Army Green (Sul-R:1173)
- 18.Dk. Pine Green (Sul-R:1174)
- 19.Wine (Sul-R:1312)
- 20.4 (Sul-R:1324)

4.vip

6.51x8.56 inches; 81,711 stitches
20 thread changes; 20 colors



- 1. Pale Sea Foam (Sul-R:1086)
- 2. (Sul-R:610)
- 3. Primrose (Sul-R:1066)
- 4. Mimosa Yellow (Sul-R:1187)
- 5. Med. Ecru (Sul-R:1127)
- 6. Apricot (Sul-R:1239)
- 7. Deep Chartreuse (Sul-R:1332)
- 8. Baby Blue Tint (Sul-R:1223)
- 9. (Sul-R:1315)
- 10.Dk. Ecru (Sul-R:1128)
- 11. (Sul-R:1260)
- 12.Avocado (Sul-R:1177)
- 13.Moss Green (Sul-R:630)
- 14.Cornflower Blue (Sul-R:1249)
- 15.Dk. Gray Khaki (Sul-R:1270)
- 16.Med. Army Green (Sul-R:1173)
- 17.Dk. Pine Green (Sul-R:1174)
- 18.Wine (Sul-R:1312)
- 19.4 (Sul-R:1324)

Sunflowers.vip

11.81x17.74 inches; 415,252 stitches
19 thread changes; 19 colors



- 1. Mad-P:1733 ■ 8. Mad-P:1900 ■ 15.Mad-P:1932
- 2. Mad-P:1802 ■ 9. Mad-P:1804 ■ 16.Mad-P:1811
- 3. Mad-P:1810 ■ 10.Mad-P:1965 ■ 17.Mad-P:1769
- 4. Mad-P:1622 ■ 11.Mad-P:1682 ■ 18.Mad-P:1902
- 5. Mad-P:1623 ■ 12.Mad-P:1884 ■ 19.Mad-P:1973
- 6. Mad-P:1723 ■ 13.Mad-P:1749 ■ 20.Mad-P:1643
- 7. Mad-P:1870 ■ 14.Mad-P:1862

1.vp3

7.30x10.03 inches; 141,630 stitches
20 thread changes; 20 colors



- 1. Mad-P:1733 ■ 8. Mad-P:1900 ■ 15.Mad-P:1932
- 2. Mad-P:1802 ■ 9. Mad-P:1804 ■ 16.Mad-P:1811
- 3. Mad-P:1810 ■ 10.Mad-P:1965 ■ 17.Mad-P:1769
- 4. Mad-P:1622 ■ 11.Mad-P:1682 ■ 18.Mad-P:1902
- 5. Mad-P:1623 ■ 12.Mad-P:1884 ■ 19.Mad-P:1973
- 6. Mad-P:1723 ■ 13.Mad-P:1749 ■ 20.Mad-P:1643
- 7. Mad-P:1870 ■ 14.Mad-P:1862

2.vp3

7.30x9.01 inches; 106,095 stitches
20 thread changes; 20 colors



- 1. Mad-P:1733 ■ 8. Mad-P:1900 ■ 15.Mad-P:1932
- 2. Mad-P:1802 ■ 9. Mad-P:1804 ■ 16.Mad-P:1811
- 3. Mad-P:1810 ■ 10.Mad-P:1965 ■ 17.Mad-P:1769
- 4. Mad-P:1622 ■ 11.Mad-P:1682 ■ 18.Mad-P:1902
- 5. Mad-P:1623 ■ 12.Mad-P:1884 ■ 19.Mad-P:1973
- 6. Mad-P:1723 ■ 13.Mad-P:1749 ■ 20.Mad-P:1643
- 7. Mad-P:1870 ■ 14.Mad-P:1862

3.vp3

5.93x10.56 inches; 90,804 stitches
20 thread changes; 20 colors



- 1. Mad-P:1733 ■ 8. Mad-P:1900 ■ 15.Mad-P:1932
- 2. Mad-P:1802 ■ 9. Mad-P:1804 ■ 16.Mad-P:1811
- 3. Mad-P:1810 ■ 10.Mad-P:1965 ■ 17.Mad-P:1769
- 4. Mad-P:1622 ■ 11.Mad-P:1682 ■ 18.Mad-P:1902
- 5. Mad-P:1623 ■ 12.Mad-P:1884 ■ 19.Mad-P:1973
- 6. Mad-P:1723 ■ 13.Mad-P:1749 ■ 20.Mad-P:1643
- 7. Mad-P:1870 ■ 14.Mad-P:1862

4.vp3

6.51x8.56 inches; 81,711 stitches
20 thread changes; 20 colors



- 1. Mad-R:1003 ■ 8. Mad-R:1292 ■ 15.Mad-R:1011
- 2. Mad-R:1118 ■ 9. Mad-R:1178 ■ 16.Mad-R:1394
- 3. Mad-R:1022 ■ 10.Mad-R:1128 ■ 17.Mad-R:1103
- 4. Mad-R:1180 ■ 11.Mad-R:1225 ■ 18.Mad-R:1174
- 5. Mad-R:1142 ■ 12.Mad-R:1048 ■ 19.Mad-R:1000
- 6. Mad-R:1155 ■ 13.Mad-R:1156
- 7. Mad-R:1049 ■ 14.Mad-R:1132

Sunflowers.vp3

11.81x17.74 inches; 415,252 stitches
19 thread changes; 19 colors