

- 1. Mad-P:1804
- 2. Mad-P:1622
- 3. Mad-P:1682
- 4. Mad-P:1886
- 5. Mad-P:1811
- 6. Mad-P:1884
- 7. Mad-P:1854
- 8. Mad-P:1855
- 9. Mad-P:1956
- 10. Mad-P:1854
- 11. Mad-P:1621
- 12. Mad-P:1640
- 13. Mad-P:1942
- 14. Mad-P:1739

African_tomin_vp3

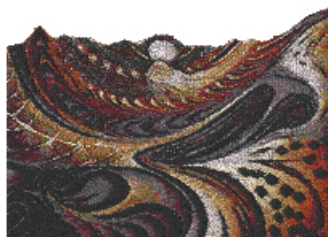
9.83x13.50 inches; 267,649 stitches
14 thread changes; 13 colors



- 1. Mad-P:1733
- 2. Mad-P:1804
- 3. Mad-P:1622
- 4. Mad-P:1682
- 5. Mad-P:1886
- 6. Mad-P:1811
- 7. Mad-P:1884
- 8. Mad-P:1854
- 9. Mad-P:1855
- 10. Mad-P:1956
- 11. Mad-P:1854
- 12. Mad-P:1621
- 13. Mad-P:1640
- 14. Mad-P:1942
- 15. Mad-P:1739

African_tomin_1_vp3

9.86x7.72 inches; 145,649 stitches
15 thread changes; 14 colors



- 1. Mad-P:1733
- 2. Mad-P:1804
- 3. Mad-P:1622
- 4. Mad-P:1682
- 5. Mad-P:1886
- 6. Mad-P:1811
- 7. Mad-P:1884
- 8. Mad-P:1854
- 9. Mad-P:1855
- 10. Mad-P:1956
- 11. Mad-P:1854
- 12. Mad-P:1621
- 13. Mad-P:1640
- 14. Mad-P:1942
- 15. Mad-P:1739

African_tomin_2_vp3

9.86x7.10 inches; 119,201 stitches
15 thread changes; 14 colors