



*Creations by Kara*

Embroidery Designs For The Creative Mind

---

## *Fashion Floral Accessories*

**5x7 hoop**

This collection contains 12 fun and flirty fashion accessory designs. These cute designs would be great on t shirts and bags. Imagine a shower curtain for your bathroom. Add some flair to your beach towel this summer.

Thread colors chosen from Madeira Poly Neon. Test stitch outs were done with flannel and a crisp mid-weight stabilizer hooped tightly with the fabric.



FFABalloon5x7

Stitches: 9481  
Colors: 1  
H: 169.7 mm  
W: 74.7 mm

Color Sequence:  
1. ■ Marlin 1797  
Brand: Madeira Neon Polyester



FFABikini5x7

Stitches: 8240  
Colors: 1  
H: 171.6 mm  
W: 88.1 mm

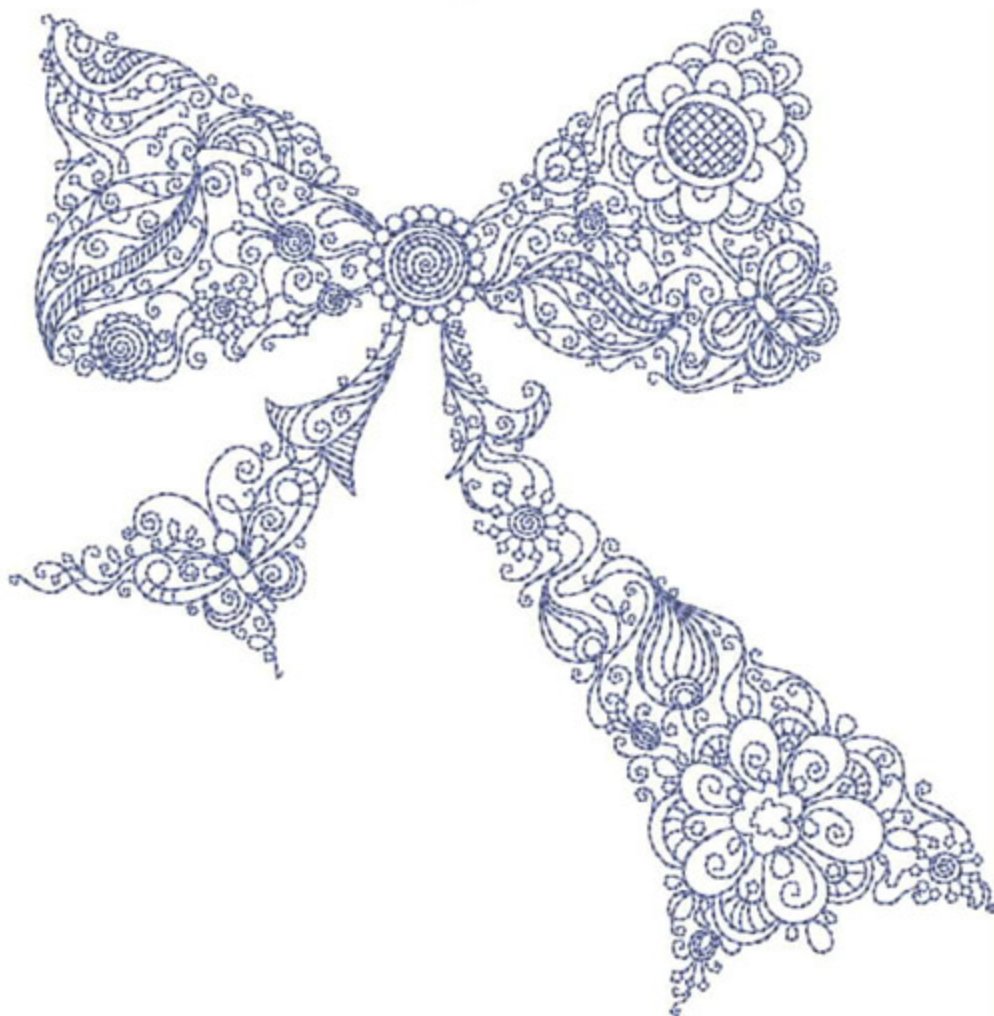
Color Sequence:  
1. ■ 1709  
Brand: Madeira poly





FFABow5x7

Stitches: 11756  
Colors: 1  
H: 128.2 mm  
W: 124.7 mm

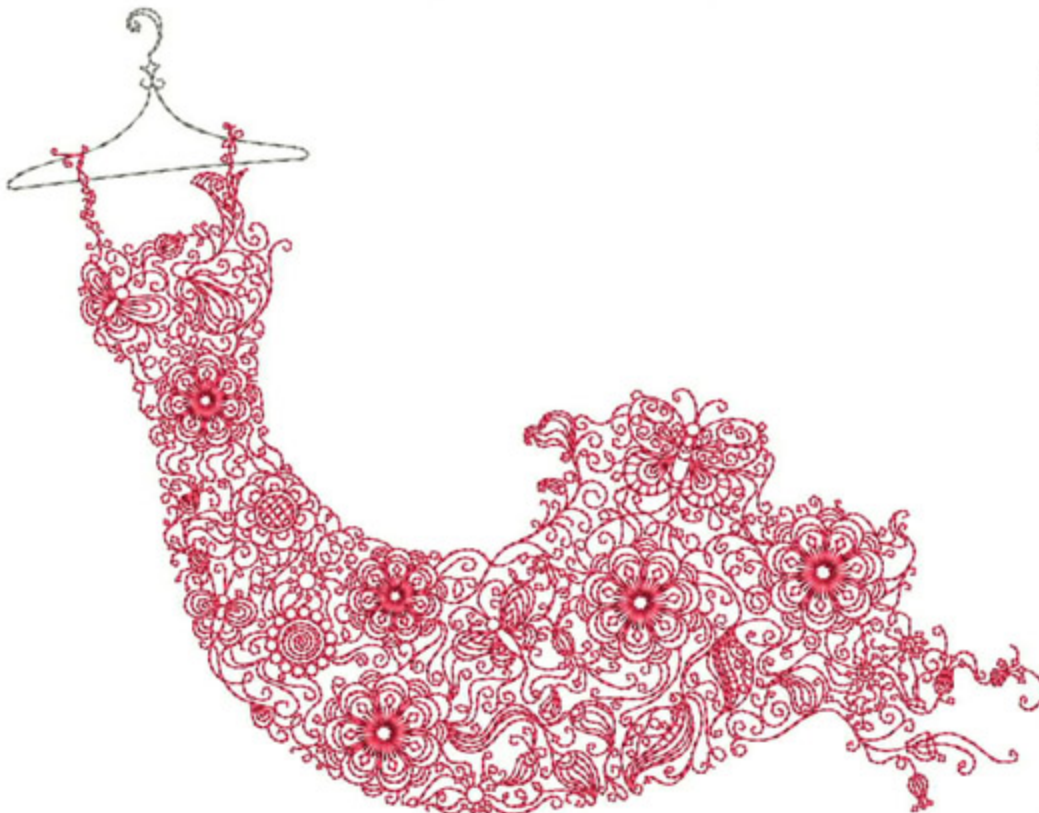




Color Sequence:  
1. ■ Cristy Blue 1830  
Brand: Madeira Neon Polyester



FFADressOnHanger5x7

Stitches: 15996  
Colors: 2  
H: 162.1 mm  
W: 126.9 mm



Color Sequence:  
1.  Silvery Grey 1840  
Brand: Madeira Neon Polyester  
2.  1786  
Brand: Madeira poly



FFALips5x7

Stitches: 9029  
Colors: 1  
H: 162.0 mm  
W: 67.3 mm

Color Sequence:



1. ■ 1786

Brand: Madeira poly



FFALipStick5x7

Stitches: 12622  
Colors: 2  
H: 170.0 mm  
W: 38.0 mm

Color Sequence:  
1.  Cinder 1918  
Brand: Madeira Neon Polyester  
2.  Coldstream 1637  
Brand: Madeira Neon Polyester

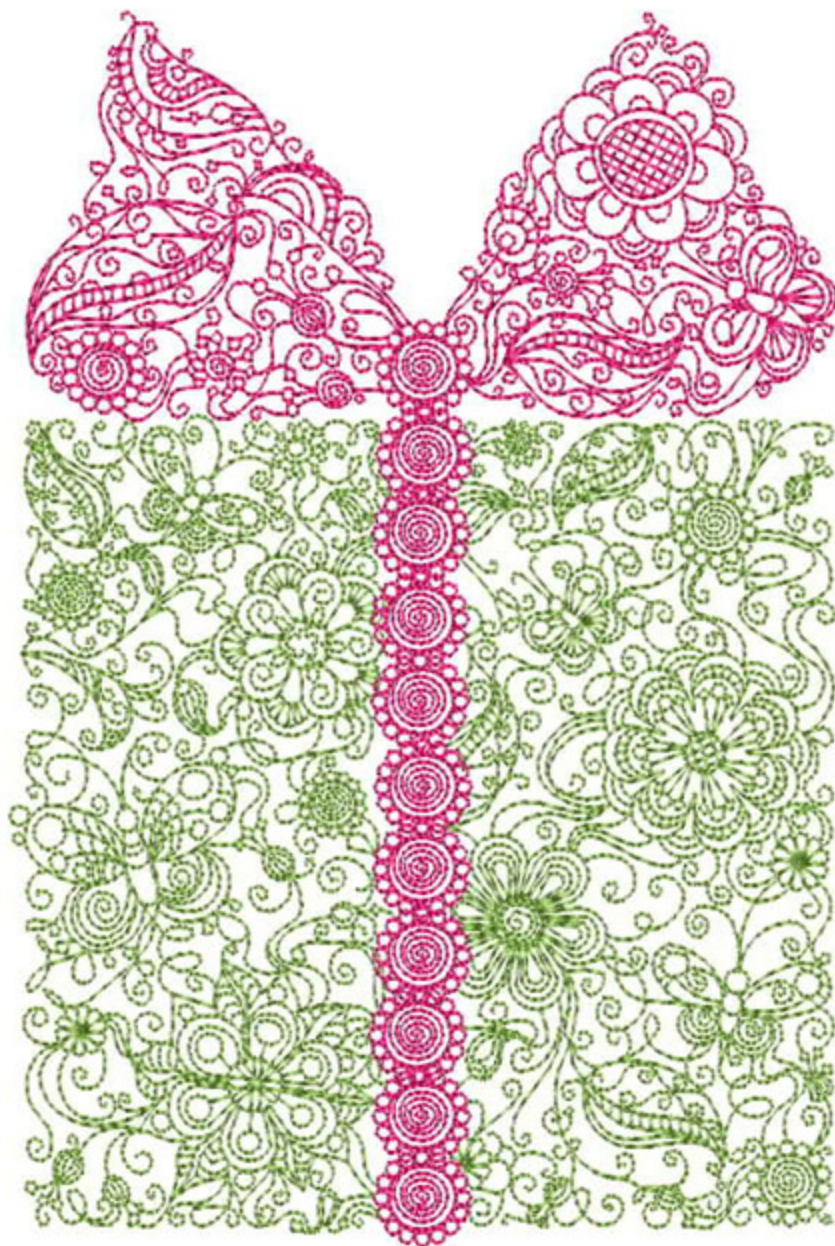


FFAPerfume5x7

Stitches: 14415  
Colors: 1  
H: 141.8 mm  
W: 122.1 mm

Color Sequence:  
1. ■ 1709  
Brand: Madeira poly





FFAPresent5x7

Stitches: 27487  
Colors: 2  
H: 172.6 mm  
W: 115.0 mm

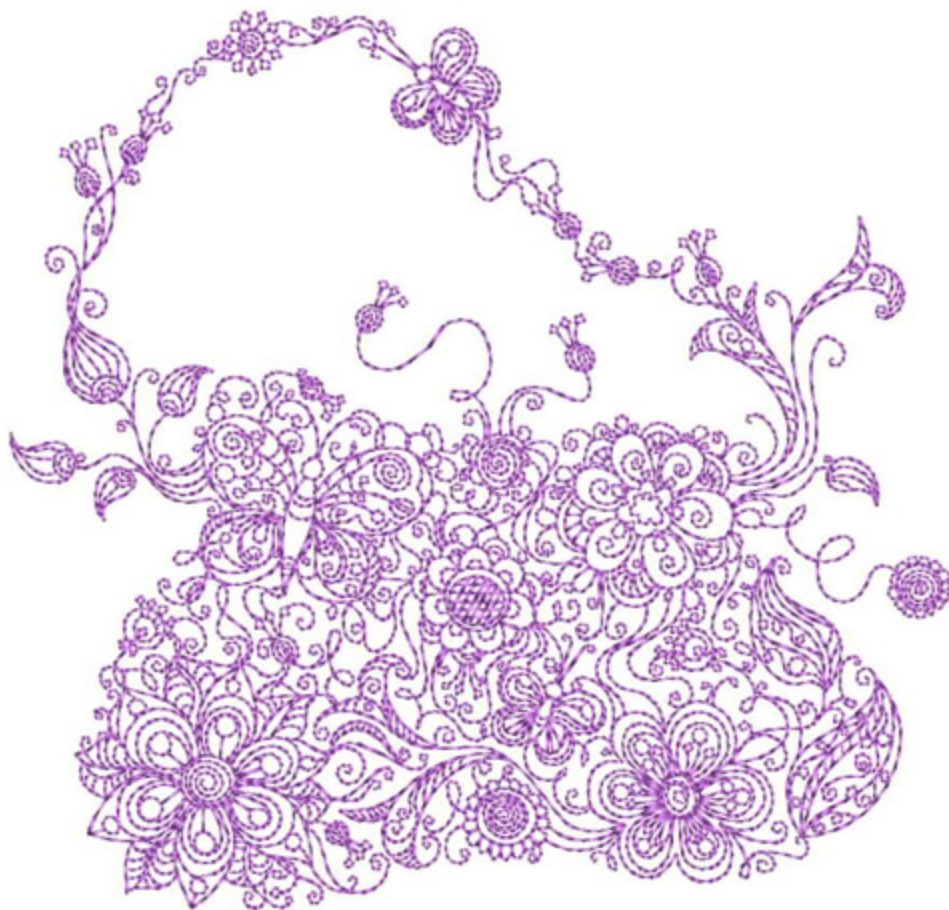
Color Sequence:  
1. ■ 1648  
Brand: Madeira poly  
2. ■ 1709  
Brand: Madeira poly



FFAPurse5x7

Stitches: 14859  
Colors: 1  
H: 122.5 mm  
W: 127.6 mm

Color Sequence:  
1. ■ Iris 1631  
Brand: Madeira Neon Polyester





FFAShoe5x7

Stitches: 9484  
Colors: 1  
H: 116.7 mm  
W: 150.8 mm

Color Sequence:  
1. ■ Coldstream 1637  
Brand: Madeira Neon Polyester



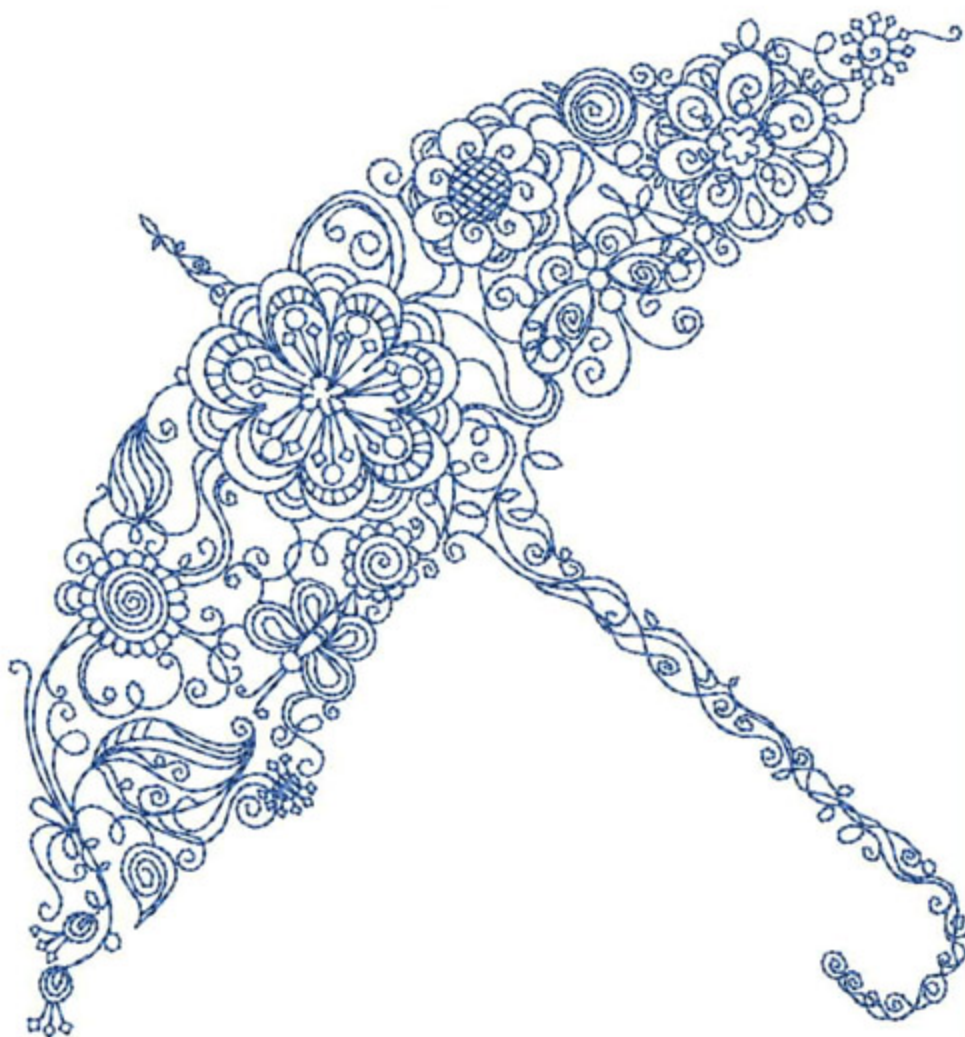
---

FFASunglasses5x7

Stitches: 12256  
Colors: 1  
H: 168.8 mm  
W: 95.7 mm

Color Sequence:  
1. ■ Satin Wine 1998  
Brand: Madeira Neon Polyester





**FFAUmbrella**

Stitches: 9365  
Colors: 1  
H: 135.5 mm  
W: 125.9 mm

Color Sequence:  
1. ■ Marlin 1797  
Brand: Madeira Neon Polyester