



■ 1. Carmine

**Victorian Ladies 01 - Single.pes**  
4.20x5.87 inches; 986 stitches  
1 thread changes; 1 colors



■ 1. Carmine

**Victorian Ladies 01 - Triple.pes**  
4.20x5.87 inches; 2,942 stitches  
1 thread changes; 1 colors



■ 1. Carmine

**Victorian Ladies 02 - Single.pes**  
2.96x5.88 inches; 1,032 stitches  
1 thread changes; 1 colors



■ 1. Carmine

**Victorian Ladies 02 - Triple.pes**  
2.96x5.88 inches; 2,888 stitches  
1 thread changes; 1 colors



■ 1. Carmine

**Victorian Ladies 03 - Single.pes**  
4.04x5.87 inches; 1,199 stitches  
1 thread changes; 1 colors



■ 1. Carmine

**Victorian Ladies 03 - Triple.pes**  
4.04x5.87 inches; 3,358 stitches  
1 thread changes; 1 colors



■ 1. Carmine

**Victorian Ladies 04 - Single.pes**  
3.93x5.88 inches; 1,085 stitches  
1 thread changes; 1 colors



■ 1. Carmine

**Victorian Ladies 04 - Triple.pes**  
3.93x5.88 inches; 2,988 stitches  
1 thread changes; 1 colors



■ 1. Carmine

**Victorian Ladies 05 - Single.pes**  
3.78x5.89 inches; 1,203 stitches  
1 thread changes; 1 colors



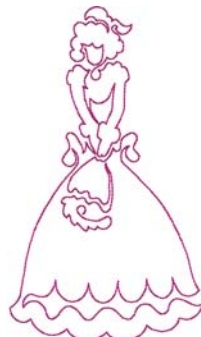
■ 1. Carmine

**Victorian Ladies 05 - Triple.pes**  
3.78x5.89 inches; 3,368 stitches  
1 thread changes; 1 colors



■ 1. Carmine

**Victorian Ladies 06 - Single.pes**  
3.38x5.87 inches; 979 stitches  
1 thread changes; 1 colors



■ 1. Carmine

**Victorian Ladies 06 - Triple.pes**  
3.38x5.87 inches; 2,753 stitches  
1 thread changes; 1 colors



■ 1. Carmine

**Victorian Ladies 07 - Single.pes**  
3.70x5.88 inches; 1,056 stitches  
1 thread changes; 1 colors



■ 1. Carmine

**Victorian Ladies 07 - Triple.pes**  
3.70x5.88 inches; 2,966 stitches  
1 thread changes; 1 colors



■ 1. Carmine

**Victorian Ladies 08 - Single.pes**  
3.77x5.87 inches; 1,047 stitches  
1 thread changes; 1 colors



■ 1. Carmine

**Victorian Ladies 08 - Triple.pes**  
3.77x5.87 inches; 2,894 stitches  
1 thread changes; 1 colors



■ 1. Carmine

**Victorian Ladies 09 - Single.pes**  
3.44x5.87 inches; 1,067 stitches  
1 thread changes; 1 colors



■ 1. Carmine

**Victorian Ladies 09 - Triple.pes**  
3.44x5.87 inches; 2,994 stitches  
1 thread changes; 1 colors



■ 1. Carmine

**Victorian Ladies 10 - Single.pes**  
3.97x5.89 inches; 1,013 stitches  
1 thread changes; 1 colors



■ 1. Carmine

**Victorian Ladies 10 - Triple.pes**  
3.97x5.89 inches; 2,796 stitches  
1 thread changes; 1 colors