

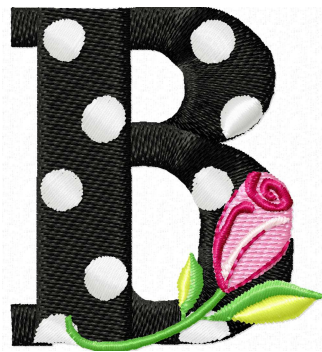
- 1 Black
- 2 White
- 3 Pale Pink
- 4 Pink
- 5 Dark Fuchsia
- 6 Fresh Green
- 7 Leaf Green



Name: Rose alph
File: HSCAL100 AsmVer5.pes
Stitches: 4854
Size: 1.90x1.98 "

Colors: 7/7
Stops: 6

- 1 Black
- 2 White
- 3 Pale Pink
- 4 Flesh Pink
- 5 Dark Fuchsia
- 6 Fresh Green
- 7 Leaf Green



Name: Rose alpha
File: HSCAL100 BsmVer5.pes
Stitches: 5848
Size: 1.86x2.03 "

Colors: 7/7
Stops: 6

- 1 Black
- 2 White
- 3 Pale Pink
- 4 Flesh Pink
- 5 Dark Fuchsia
- 6 Fresh Green
- 7 Leaf Green



Name: ROSE ALPHA
File: HSCAL100 CsmVer5.pes
Stitches: 4520
Size: 1.80x1.99 "

Colors: 7/7
Stops: 6

- 1 Black
- 2 White
- 3 Pale Pink
- 4 Flesh Pink
- 5 Dark Fuchsia
- 6 Fresh Green
- 7 Leaf Green



File: HSCAL100 DsmVer5.pes
Stitches: 5344
Size: 2.07x2.01 "

Colors: 7/7
Stops: 6

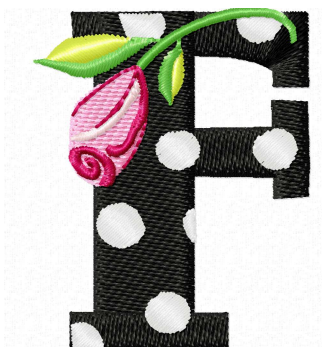
- 1 Black
- 2 White
- 3 Pale Pink
- 4 Flesh Pink
- 5 Dark Fuchsia
- 6 Fresh Green
- 7 Leaf Green



File: HSCAL100 EsmVer5.pes
Stitches: 5315
Size: 1.70x2.52 "

Colors: 7/7
Stops: 6

- 1 Black
- 2 White
- 3 Pale Pink
- 4 Flesh Pink
- 5 Dark Fuchsia
- 6 Fresh Green
- 7 Leaf Green



File: HSCAL100 FsmVer5.pes
Stitches: 4483
Size: 1.62x2.03 "

Colors: 7/7
Stops: 6

- 1 Black
- 2 White
- 3 Pale Pink
- 4 Pink
- 5 Dark Fuchsia
- 6 Fresh Green
- 7 Leaf Green



Name: Polka dot rose Alpha
File: HSCAL100 GsmVer5.pes
Stitches: 5480
Size: 2.04x2.01 "

Colors: 7/7
Stops: 6

- 1 Black
- 2 White
- 3 Pale Pink
- 4 Pink
- 5 Dark Fuchsia
- 6 Fresh Green
- 7 Leaf Green



File: HSCAL100 HsmVer5.pes
Stitches: 6250
Size: 2.16x2.00 "

Colors: 7/7
Stops: 6

- 1 Black
- 2 White
- 3 Pale Pink
- 4 Pink
- 5 Dark Fuchsia
- 6 Fresh Green
- 7 Leaf Green



File: HSCAL100 IsmVer5.pes
Stitches: 3939
Size: 0.96x2.00 "

Colors: 7/7
Stops: 6

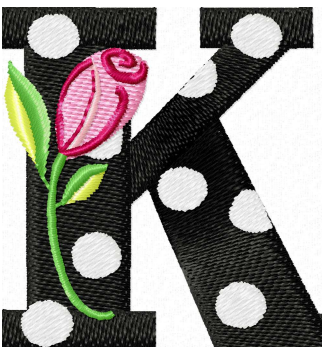
- 1 Black
- 2 White
- 3 Pale Pink
- 4 Flesh Pink
- 5 Dark Fuchsia
- 6 Fresh Green
- 7 Leaf Green



Name: Polka dot J
File: HSCAL100 JsmVer5.pes
Stitches: 3601
Size: 1.11x2.01 "

Colors: 7/7
Stops: 6

- 1 Black
- 2 White
- 3 Pale Pink
- 4 Pink
- 5 Dark Fuchsia
- 6 Fresh Green
- 7 Leaf Green



Name: Polka dot K
File: HSCAL100 KsmVer5.pes
Stitches: 6299
Size: 1.96x2.02 "

Colors: 7/7
Stops: 6

- 1 Black
- 2 White
- 3 Pale Pink
- 4 Flesh Pink
- 5 Dark Fuchsia
- 6 Fresh Green
- 7 Leaf Green



File: HSCAL100 LsmVer5.pes
Stitches: 4241
Size: 1.64x2.39 "

Colors: 7/7
Stops: 6

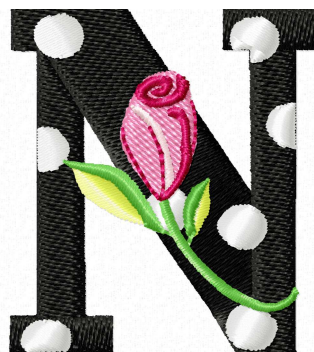
- 1 Black
- 2 White
- 3 Pale Pink
- 4 Pink
- 5 Dark Fuchsia
- 6 Fresh Green
- 7 Leaf Green



Name: polka dot alpha
 File: HSCAL100 MsmVer5.pes
 Stitches: 6874
 Size: 2.34x2.01 "

Colors: 7/7
 Stops: 6

- 1 Black
- 2 White
- 3 Pale Pink
- 4 Flesh Pink
- 5 Dark Fuchsia
- 6 Fresh Green
- 7 Leaf Green



Name: polka dot N
 File: HSCAL100 NsmVer5.pes
 Stitches: 5412
 Size: 1.79x1.99 "

Colors: 7/7
 Stops: 6

- 1 Black
- 2 White
- 3 Pale Pink
- 4 Flesh Pink
- 5 Dark Fuchsia
- 6 Fresh Green
- 7 Leaf Green



Name: Polka dot O
 File: HSCAL100 OsmVer5.pes
 Stitches: 5777
 Size: 2.16x2.00 "

Colors: 7/7
 Stops: 6

- 1 Black
- 2 White
- 3 Pale Pink
- 4 Pink
- 5 Dark Fuchsia
- 6 Fresh Green
- 7 Leaf Green



Name: Polka dot P
 File: HSCAL100 PsmVer5.pes
 Stitches: 5788
 Size: 1.96x2.03 "

Colors: 7/7
 Stops: 6

- 1 Black
- 2 White
- 3 Pale Pink
- 4 Flesh Pink
- 5 Dark Fuchsia
- 6 Fresh Green
- 7 Leaf Green



Name: Polka dot Q
 File: HSCAL100 QsmVer5.pes
 Stitches: 6867
 Size: 2.17x2.65 "

Colors: 7/7
 Stops: 6

- 1 Black
- 2 White
- 3 Pale Pink
- 4 Pink
- 5 Dark Fuchsia
- 6 Fresh Green
- 7 Leaf Green



Name: Polka dot R
 File: HSCAL100 RsmVer5.pes
 Stitches: 5890
 Size: 1.92x1.99 "

Colors: 7/7
 Stops: 6

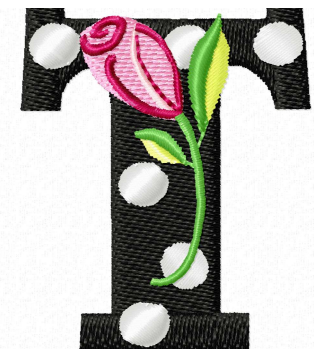
- 1 Black
- 2 White
- 3 Pale Pink
- 4 Flesh Pink
- 5 Dark Fuchsia
- 6 Fresh Green
- 7 Leaf Green



Name: Polka dot S
 File: HSCAL100 SsmVer5.pes
 Stitches: 5336
 Size: 1.75x2.17 "

Colors: 7/7
 Stops: 6

- 1 Black
- 2 White
- 3 Pale Pink
- 4 Pink
- 5 Dark Fuchsia
- 6 Fresh Green
- 7 Leaf Green



Name: Polka dot T
 File: HSCAL100 TsmVer5.pes
 Stitches: 4587
 Size: 1.69x2.02 "

Colors: 7/7
 Stops: 6

- 1 Black
- 2 White
- 3 Pale Pink
- 4 Pink
- 5 Dark Fuchsia
- 6 Fresh Green
- 7 Leaf Green



Name: Polka dot U
 File: HSCAL100 UsmVer5.pes
 Stitches: 5778
 Size: 2.09x2.13 "

Colors: 7/7
 Stops: 6

- 1 Black
- 2 White
- 3 Pale Pink
- 4 Pink
- 5 Dark Fuchsia
- 6 Fresh Green
- 7 Leaf Green



Name: Polka dot V
 File: HSCAL100 VsmVer5.pes
 Stitches: 5330
 Size: 2.06x2.02 "

Colors: 7/7
 Stops: 6

- 1 Black
- 2 White
- 3 Pale Pink
- 4 Flesh Pink
- 5 Dark Fuchsia
- 6 Fresh Green
- 7 Leaf Green



Name: Polka dot W
 File: HSCAL100 WsmVer5.pes
 Stitches: 6698
 Size: 2.59x2.02 "

Colors: 7/7
 Stops: 6

- 1 Black
- 2 White
- 3 Pale Pink
- 4 Flesh Pink
- 5 Dark Fuchsia
- 6 Fresh Green
- 7 Leaf Green



Name: Polka dot X
 File: HSCAL100 XsmVer5.pes
 Stitches: 5834
 Size: 1.99x2.01 "

Colors: 7/7
 Stops: 6

- 1 Black
- 2 White
- 3 Pale Pink
- 4 Flesh Pink
- 5 Dark Fuchsia
- 6 Fresh Green
- 7 Leaf Green



- 1 Black
- 2 White
- 3 Pale Pink
- 4 Flesh Pink
- 5 Dark Fuchsia
- 6 Fresh Green
- 7 Leaf Green



Name: Polka dot Y
File: HSCAL100 YsmVer5.pes
Stitches: 5272
Size: 1.94x2.02 "

Colors: 7/7
Stops: 6

Name: Polka dot Z
File: HSCAL100 ZsmVer5.pes
Stitches: 4721
Size: 1.66x2.24 "

Colors: 7/7
Stops: 6