



- 1. Poppy (Sul-R:1317)
- 2. Cobalt Blue (Sul-R:526)
- 3. Ecru (Sul-R:1082)
- 4. Lt. Putty (Sul-R:1229)
- 5. Tawny Tan (Sul-R:1055)
- 6. Dk. Ecru (Sul-R:1128)
- 7. Ecru (Sul-R:1082)
- 8. Cream (Sul-R:1022)
- 9. Med. Ecru (Sul-R:1127)
- 10. Deep Ecru (Sul-R:1149)
- 11. Pale Sea Foam (Sul-R:1086)
- 12. Silver (Sul-R:1085)
- 13. Ecru (Sul-R:1082)
- 14. Taupe (Sul-R:1213)
- 15. Pink Tint (Sul-R:1068)
- 16. Lt. Putty (Sul-R:1229)
- 17. Cream (Sul-R:1022)
- 18. Pastel Peach (Sul-R:1017)

**Gfe-Kgr-Fb-End.vip**

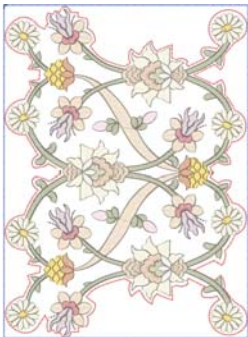
4.41x9.52 inches; 28,218 stitches  
18 thread changes; 14 colors



- 1. Poppy (Sul-R:1317)
- 2. Cobalt Blue (Sul-R:526)
- 3. Ecru (Sul-R:1082)
- 4. Lt. Putty (Sul-R:1229)
- 5. Tawny Tan (Sul-R:1055)
- 6. Dk. Ecru (Sul-R:1128)
- 7. Ecru (Sul-R:1082)
- 8. Cream (Sul-R:1022)
- 9. Med. Ecru (Sul-R:1127)
- 10. Deep Ecru (Sul-R:1149)
- 11. Pale Sea Foam (Sul-R:1086)
- 12. Silver (Sul-R:1085)
- 13. Ecru (Sul-R:1082)
- 14. Taupe (Sul-R:1213)
- 15. Pink Tint (Sul-R:1068)
- 16. Lt. Putty (Sul-R:1229)
- 17. Cream (Sul-R:1022)
- 18. Pastel Peach (Sul-R:1017)

**Gfe-Kgr-Fb-End.vp3**

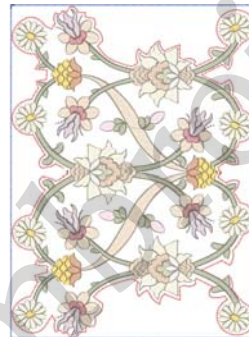
4.41x9.52 inches; 28,218 stitches  
18 thread changes; 14 colors



- 1. Poppy (Sul-R:1317)
- 2. Cobalt Blue (Sul-R:526)
- 3. Ecru (Sul-R:1082)
- 4. Lt. Putty (Sul-R:1229)
- 5. Tawny Tan (Sul-R:1055)
- 6. Dk. Ecru (Sul-R:1128)
- 7. Ecru (Sul-R:1082)
- 8. Cream (Sul-R:1022)
- 9. Med. Ecru (Sul-R:1127)
- 10. Deep Ecru (Sul-R:1149)
- 11. Pale Sea Foam (Sul-R:1086)
- 12. Silver (Sul-R:1085)
- 13. Ecru (Sul-R:1082)
- 14. Taupe (Sul-R:1213)
- 15. Pink Tint (Sul-R:1068)
- 16. Lt. Putty (Sul-R:1229)
- 17. Cream (Sul-R:1022)
- 18. Tawny Tan (Sul-R:1055)

**Gfe-Kgr-Fb-Half Panel 2.vip**

5.32x7.30 inches; 27,801 stitches  
18 thread changes; 13 colors



- 1. Poppy (Sul-R:1317)
- 2. Cobalt Blue (Sul-R:526)
- 3. Ecru (Sul-R:1082)
- 4. Lt. Putty (Sul-R:1229)
- 5. Tawny Tan (Sul-R:1055)
- 6. Dk. Ecru (Sul-R:1128)
- 7. Ecru (Sul-R:1082)
- 8. Cream (Sul-R:1022)
- 9. Med. Ecru (Sul-R:1127)
- 10. Deep Ecru (Sul-R:1149)
- 11. Pale Sea Foam (Sul-R:1086)
- 12. Silver (Sul-R:1085)
- 13. Ecru (Sul-R:1082)
- 14. Taupe (Sul-R:1213)
- 15. Pink Tint (Sul-R:1068)
- 16. Lt. Putty (Sul-R:1229)
- 17. Cream (Sul-R:1022)
- 18. Tawny Tan (Sul-R:1055)

**Gfe-Kgr-Fb-Half Panel 2.vp3**

5.32x7.30 inches; 27,801 stitches  
18 thread changes; 13 colors



- 1. Poppy (Sul-R:1317)
- 2. Orange Sunrise (Sul-R:1238)
- 3. Cobalt Blue (Sul-R:526)
- 4. Ecru (Sul-R:1082)
- 5. Lt. Putty (Sul-R:1229)
- 6. Tawny Tan (Sul-R:1055)
- 7. Dk. Ecru (Sul-R:1128)
- 8. Ecru (Sul-R:1082)
- 9. Cream (Sul-R:1022)
- 10. Med. Ecru (Sul-R:1127)
- 11. Deep Ecru (Sul-R:1149)
- 12. Pale Sea Foam (Sul-R:1086)
- 13. Silver (Sul-R:1085)
- 14. Ecru (Sul-R:1082)
- 15. Taupe (Sul-R:1213)
- 16. Pink Tint (Sul-R:1068)
- 17. Lt. Putty (Sul-R:1229)
- 18. Cream (Sul-R:1022)
- 19. Tawny Tan (Sul-R:1055)

**Gfe-Kgr-Fb-Half Panel.vip**

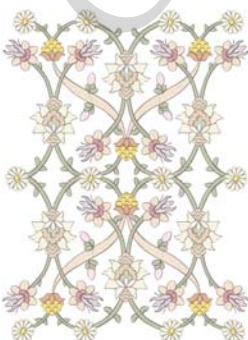
5.53x7.60 inches; 27,011 stitches  
19 thread changes; 14 colors



- 1. Poppy (Sul-R:1317)
- 2. Orange Sunrise (Sul-R:1238)
- 3. Cobalt Blue (Sul-R:526)
- 4. Ecru (Sul-R:1082)
- 5. Lt. Putty (Sul-R:1229)
- 6. Tawny Tan (Sul-R:1055)
- 7. Dk. Ecru (Sul-R:1128)
- 8. Ecru (Sul-R:1082)
- 9. Cream (Sul-R:1022)
- 10. Med. Ecru (Sul-R:1127)
- 11. Deep Ecru (Sul-R:1149)
- 12. Pale Sea Foam (Sul-R:1086)
- 13. Silver (Sul-R:1085)
- 14. Ecru (Sul-R:1082)
- 15. Taupe (Sul-R:1213)
- 16. Pink Tint (Sul-R:1068)
- 17. Lt. Putty (Sul-R:1229)
- 18. Cream (Sul-R:1022)
- 19. Tawny Tan (Sul-R:1055)

**Gfe-Kgr-Fb-Half Panel.vp3**

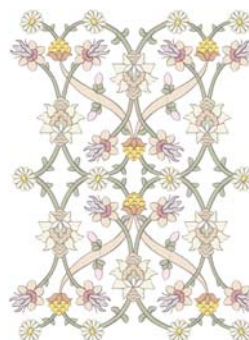
5.53x7.60 inches; 27,011 stitches  
19 thread changes; 14 colors



- 1. Ecru (Sul-R:1082)
- 2. Lt. Putty (Sul-R:1229)
- 3. Tawny Tan (Sul-R:1055)
- 4. Dk. Ecru (Sul-R:1128)
- 5. Ecru (Sul-R:1082)
- 6. Cream (Sul-R:1022)
- 7. Med. Ecru (Sul-R:1127)
- 8. Deep Ecru (Sul-R:1149)
- 9. Pale Sea Foam (Sul-R:1086)
- 10. Silver (Sul-R:1085)
- 11. Ecru (Sul-R:1082)
- 12. Taupe (Sul-R:1213)
- 13. Pink Tint (Sul-R:1068)
- 14. Lt. Putty (Sul-R:1229)
- 15. Cream (Sul-R:1022)
- 16. Tawny Tan (Sul-R:1055)

**Gfe-Kgr-Fb-Panel.vip**

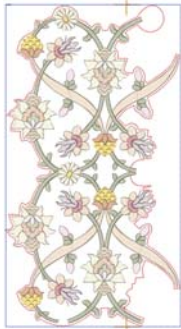
7.16x9.69 inches; 51,717 stitches  
16 thread changes; 11 colors



- 1. Ecru (Sul-R:1082)
- 2. Lt. Putty (Sul-R:1229)
- 3. Tawny Tan (Sul-R:1055)
- 4. Dk. Ecru (Sul-R:1128)
- 5. Ecru (Sul-R:1082)
- 6. Cream (Sul-R:1022)
- 7. Med. Ecru (Sul-R:1127)
- 8. Deep Ecru (Sul-R:1149)
- 9. Pale Sea Foam (Sul-R:1086)
- 10. Silver (Sul-R:1085)
- 11. Ecru (Sul-R:1082)
- 12. Taupe (Sul-R:1213)
- 13. Pink Tint (Sul-R:1068)
- 14. Lt. Putty (Sul-R:1229)
- 15. Cream (Sul-R:1022)
- 16. Tawny Tan (Sul-R:1055)

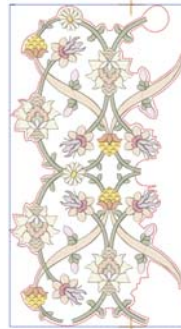
**Gfe-Kgr-Fb-Panel.vp3**

7.16x9.69 inches; 51,717 stitches  
16 thread changes; 11 colors



- 1. Poppy (Sul-R:1317)
- 2. Orange Sunrise (Sul-R:1238)
- 3. Cobalt Blue (Sul-R:526)
- 4. Ecrú (Sul-R:1082)
- 5. Lt. Putty (Sul-R:1229)
- 6. Tawny Tan (Sul-R:1055)
- 7. Dk. Ecrú (Sul-R:1128)
- 8. Ecrú (Sul-R:1082)
- 9. Cream (Sul-R:1022)
- 10. Med. Ecrú (Sul-R:1127)
- 11. Deep Ecrú (Sul-R:1149)
- 12. Pale Sea Foam (Sul-R:1086)
- 13. Silver (Sul-R:1085)
- 14. Ecrú (Sul-R:1082)
- 15. Taupe (Sul-R:1213)
- 16. Pink Tint (Sul-R:1068)
- 17. Lt. Putty (Sul-R:1229)
- 18. Cream (Sul-R:1022)
- 19. Tawny Tan (Sul-R:1055)

**Gfe-Kgr-Fb-Start.vip**  
5.15x9.83 inches; 29,524 stitches  
19 thread changes; 14 colors



- 1. Poppy (Sul-R:1317)
- 2. Orange Sunrise (Sul-R:1238)
- 3. Cobalt Blue (Sul-R:526)
- 4. Ecrú (Sul-R:1082)
- 5. Lt. Putty (Sul-R:1229)
- 6. Tawny Tan (Sul-R:1055)
- 7. Dk. Ecrú (Sul-R:1128)
- 8. Ecrú (Sul-R:1082)
- 9. Cream (Sul-R:1022)
- 10. Med. Ecrú (Sul-R:1127)
- 11. Deep Ecrú (Sul-R:1149)
- 12. Pale Sea Foam (Sul-R:1086)
- 13. Silver (Sul-R:1085)
- 14. Ecrú (Sul-R:1082)
- 15. Taupe (Sul-R:1213)
- 16. Pink Tint (Sul-R:1068)
- 17. Lt. Putty (Sul-R:1229)
- 18. Cream (Sul-R:1022)
- 19. Tawny Tan (Sul-R:1055)

**Gfe-Kgr-Fb-Start.vp3**  
5.15x9.83 inches; 29,524 stitches  
19 thread changes; 14 colors



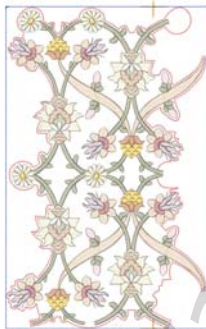
- 1. Poppy (Sul-R:1317)
- 2. Orange Sunrise (Sul-R:1238)
- 3. Cobalt Blue (Sul-R:526)
- 4. Ecrú (Sul-R:1082)
- 5. Lt. Putty (Sul-R:1229)
- 6. Tawny Tan (Sul-R:1055)
- 7. Dk. Ecrú (Sul-R:1128)
- 8. Ecrú (Sul-R:1082)
- 9. Cream (Sul-R:1022)
- 10. Med. Ecrú (Sul-R:1127)
- 11. Deep Ecrú (Sul-R:1149)
- 12. Pale Sea Foam (Sul-R:1086)
- 13. Silver (Sul-R:1085)
- 14. Ecrú (Sul-R:1082)
- 15. Taupe (Sul-R:1213)
- 16. Pink Tint (Sul-R:1068)
- 17. Lt. Putty (Sul-R:1229)
- 18. Cream (Sul-R:1022)
- 19. Tawny Tan (Sul-R:1055)

**Gfe-Kgr-Fbk-Half Main.vip**  
5.05x6.06 inches; 17,581 stitches  
19 thread changes; 14 colors



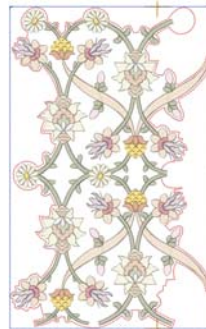
- 1. Poppy (Sul-R:1317)
- 2. Orange Sunrise (Sul-R:1238)
- 3. Cobalt Blue (Sul-R:526)
- 4. Ecrú (Sul-R:1082)
- 5. Lt. Putty (Sul-R:1229)
- 6. Tawny Tan (Sul-R:1055)
- 7. Dk. Ecrú (Sul-R:1128)
- 8. Ecrú (Sul-R:1082)
- 9. Cream (Sul-R:1022)
- 10. Med. Ecrú (Sul-R:1127)
- 11. Deep Ecrú (Sul-R:1149)
- 12. Pale Sea Foam (Sul-R:1086)
- 13. Silver (Sul-R:1085)
- 14. Ecrú (Sul-R:1082)
- 15. Taupe (Sul-R:1213)
- 16. Pink Tint (Sul-R:1068)
- 17. Lt. Putty (Sul-R:1229)
- 18. Cream (Sul-R:1022)
- 19. Tawny Tan (Sul-R:1055)

**Gfe-Kgr-Fbk-Half Main.vp3**  
6.06x5.05 inches; 17,581 stitches  
19 thread changes; 14 colors



- 1. Poppy (Sul-R:1317)
- 2. Orange Sunrise (Sul-R:1238)
- 3. Cobalt Blue (Sul-R:526)
- 4. Ecrú (Sul-R:1082)
- 5. Lt. Putty (Sul-R:1229)
- 6. Tawny Tan (Sul-R:1055)
- 7. Dk. Ecrú (Sul-R:1128)
- 8. Ecrú (Sul-R:1082)
- 9. Cream (Sul-R:1022)
- 10. Med. Ecrú (Sul-R:1127)
- 11. Deep Ecrú (Sul-R:1149)
- 12. Pale Sea Foam (Sul-R:1086)
- 13. Silver (Sul-R:1085)
- 14. Ecrú (Sul-R:1082)
- 15. Taupe (Sul-R:1213)
- 16. Pink Tint (Sul-R:1068)
- 17. Lt. Putty (Sul-R:1229)
- 18. Cream (Sul-R:1022)
- 19. Tawny Tan (Sul-R:1055)

**Gfe-Kgr-Fbk-Main.vip**  
5.89x9.83 inches; 34,772 stitches  
19 thread changes; 14 colors



- 1. Poppy (Sul-R:1317)
- 2. Orange Sunrise (Sul-R:1238)
- 3. Cobalt Blue (Sul-R:526)
- 4. Ecrú (Sul-R:1082)
- 5. Lt. Putty (Sul-R:1229)
- 6. Tawny Tan (Sul-R:1055)
- 7. Dk. Ecrú (Sul-R:1128)
- 8. Ecrú (Sul-R:1082)
- 9. Cream (Sul-R:1022)
- 10. Med. Ecrú (Sul-R:1127)
- 11. Deep Ecrú (Sul-R:1149)
- 12. Pale Sea Foam (Sul-R:1086)
- 13. Silver (Sul-R:1085)
- 14. Ecrú (Sul-R:1082)
- 15. Taupe (Sul-R:1213)
- 16. Pink Tint (Sul-R:1068)
- 17. Lt. Putty (Sul-R:1229)
- 18. Cream (Sul-R:1022)
- 19. Tawny Tan (Sul-R:1055)

**Gfe-Kgr-Fbk-Main.vp3**  
5.89x9.83 inches; 34,772 stitches  
19 thread changes; 14 colors