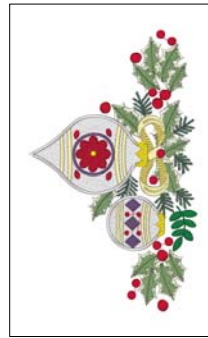


- 1. Dk. French Green (Sul-R:1286)
- 2. Cream (Sul-R:1022)
- 3. Soft White (Sul-R:1002)
- 4. Xmas Green (Sul-R:1051)
- 5. Moss Green (Sul-R:630)
- 6. Maize Yellow (Sul-R:1167)
- 7. Primrose (Sul-R:1066)
- 8. Soft White (Sul-R:1002)
- 9. Lt. Plum (Sul-R:1297)
- 10.Xmas Red (Sul-R:1147)
- 11.Maize Yellow (Sul-R:1167)

Gfe_bn3_1.vp3

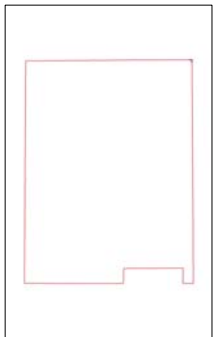
5.83x5.75 inches; 30,549 stitches
11 thread changes; 9 colors



- 1. Dk. French Green (Sul-R:1286)
- 2. Cream (Sul-R:1022)
- 3. Soft White (Sul-R:1002)
- 4. Xmas Green (Sul-R:1051)
- 5. Moss Green (Sul-R:630)
- 6. Maize Yellow (Sul-R:1167)
- 7. Primrose (Sul-R:1066)
- 8. Soft White (Sul-R:1002)
- 9. Lt. Plum (Sul-R:1297)
- 10.Xmas Red (Sul-R:1147)
- 11.Yellow (Sul-R:1023)

Gfe_bn3_10.vp3

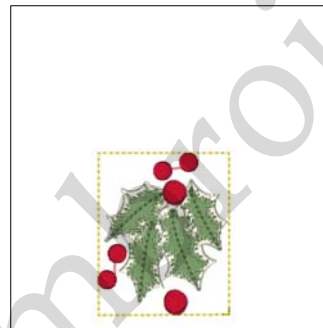
4.46x7.46 inches; 29,077 stitches
11 thread changes; 10 colors



- 1. (Sul-R:1319)

Gfe_bn3_10as.vp3

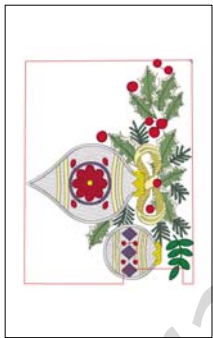
4.48x5.96 inches; 290 stitches
1 thread changes; 1 colors



- 1. Yellow (Sul-R:1023)
- 2. Cream (Sul-R:1022)
- 3. Moss Green (Sul-R:630)
- 4. Xmas Red (Sul-R:1147)

Gfe_bn3_10b.vp3

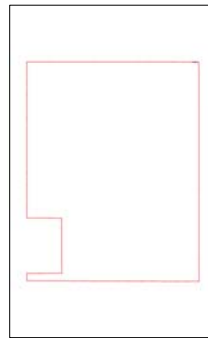
1.58x1.98 inches; 3,911 stitches
4 thread changes; 4 colors



- 1. Dk. French Green (Sul-R:1286)
- 2. Cream (Sul-R:1022)
- 3. Soft White (Sul-R:1002)
- 4. Xmas Green (Sul-R:1051)
- 5. Moss Green (Sul-R:630)
- 6. Maize Yellow (Sul-R:1167)
- 7. Primrose (Sul-R:1066)
- 8. Soft White (Sul-R:1002)
- 9. Lt. Plum (Sul-R:1297)
- 10.Xmas Red (Sul-R:1147)
- 11.Yellow (Sul-R:1023)
- 12. (Sul-R:1319)

Gfe_bn3_10c.vp3

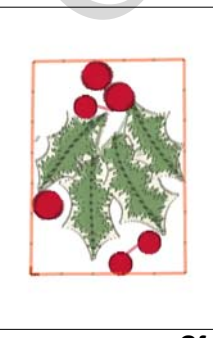
4.49x5.98 inches; 25,559 stitches
12 thread changes; 11 colors



- 1. (Sul-R:1319)

Gfe_bn3_1as.vp3

4.57x5.84 inches; 87 stitches
1 thread changes; 1 colors



- 1. Cream (Sul-R:1022)
- 2. Moss Green (Sul-R:630)
- 3. Soft White (Sul-R:1002)
- 4. Xmas Red (Sul-R:1147)
- 5. Tangerine (Sul-R:1078)

Gfe_bn3_1b.vp3

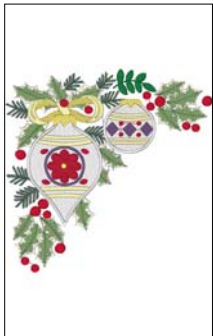
1.50x2.09 inches; 3,885 stitches
5 thread changes; 5 colors



- 1. Dk. French Green (Sul-R:1286)
- 2. Cream (Sul-R:1022)
- 3. Soft White (Sul-R:1002)
- 4. Xmas Green (Sul-R:1051)
- 5. Moss Green (Sul-R:630)
- 6. Maize Yellow (Sul-R:1167)
- 7. Primrose (Sul-R:1066)
- 8. Soft White (Sul-R:1002)
- 9. Lt. Plum (Sul-R:1297)
- 10.Xmas Red (Sul-R:1147)
- 11.Maize Yellow (Sul-R:1167)
- 12. (Sul-R:1319)

Gfe_bn3_1c.vp3

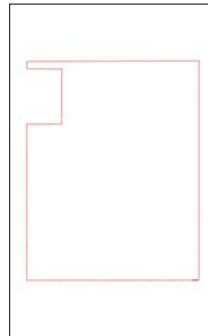
5.84x4.57 inches; 26,785 stitches
12 thread changes; 10 colors



- 1. Dk. French Green (Sul-R:1286)
- 2. Cream (Sul-R:1022)
- 3. Soft White (Sul-R:1002)
- 4. Xmas Green (Sul-R:1051)
- 5. Moss Green (Sul-R:630)
- 6. Maize Yellow (Sul-R:1167)
- 7. Primrose (Sul-R:1066)
- 8. Soft White (Sul-R:1002)
- 9. Lt. Plum (Sul-R:1297)
- 10. Xmas Red (Sul-R:1147)
- 11. Maize Yellow (Sul-R:1167)

Gfe_bn3_2_vp3

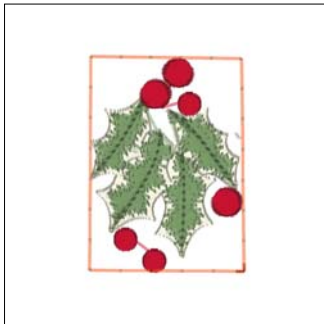
5.83x5.75 inches; 30,549 stitches
11 thread changes; 9 colors



- 1. (Sul-R:1319)

Gfe_bn3_2as_vp3

4.57x5.84 inches; 87 stitches
1 thread changes; 1 colors



- 1. Cream (Sul-R:1022)
- 2. Moss Green (Sul-R:630)
- 3. Soft White (Sul-R:1002)
- 4. Xmas Red (Sul-R:1147)
- 5. Tangerine (Sul-R:1078)

Gfe_bn3_2b_vp3

1.50x2.09 inches; 3,885 stitches
5 thread changes; 5 colors



- 1. Dk. French Green (Sul-R:1286)
- 2. Cream (Sul-R:1022)
- 3. Soft White (Sul-R:1002)
- 4. Xmas Green (Sul-R:1051)
- 5. Moss Green (Sul-R:630)
- 6. Maize Yellow (Sul-R:1167)
- 7. Primrose (Sul-R:1066)
- 8. Soft White (Sul-R:1002)
- 9. Lt. Plum (Sul-R:1297)
- 10. Xmas Red (Sul-R:1147)
- 11. Maize Yellow (Sul-R:1167)
- 12. (Sul-R:1319)

Gfe_bn3_2c_vp3

5.84x4.57 inches; 26,785 stitches
12 thread changes; 10 colors



- 1. Soft White (Sul-R:1002)
- 2. Primrose (Sul-R:1066)
- 3. Soft White (Sul-R:1002)
- 4. Lt. Plum (Sul-R:1297)
- 5. Xmas Red (Sul-R:1147)
- 6. Maize Yellow (Sul-R:1167)

Gfe_bn3_3_vp3

2.13x3.52 inches; 7,689 stitches
6 thread changes; 5 colors



- 1. Soft White (Sul-R:1002)
- 2. Primrose (Sul-R:1066)
- 3. Soft White (Sul-R:1002)
- 4. Lt. Plum (Sul-R:1297)
- 5. Xmas Red (Sul-R:1147)
- 6. Maize Yellow (Sul-R:1167)

Gfe_bn3_4_vp3

1.46x1.98 inches; 4,290 stitches
6 thread changes; 5 colors



- 1. Cream (Sul-R:1022)
- 2. Moss Green (Sul-R:630)
- 3. Dk. French Green (Sul-R:1286)
- 4. Lt. Plum (Sul-R:1297)
- 5. Primrose (Sul-R:1066)
- 6. Maize Yellow (Sul-R:1167)
- 7. Primrose (Sul-R:1066)
- 8. Cream (Sul-R:1022)
- 9. Moss Green (Sul-R:630)
- 10. Xmas Red (Sul-R:1147)

Gfe_bn3_5_vp3

5.05x4.62 inches; 25,950 stitches
10 thread changes; 7 colors



- 1. Cream (Sul-R:1022)
- 2. Moss Green (Sul-R:630)
- 3. Dk. French Green (Sul-R:1286)
- 4. Lt. Plum (Sul-R:1297)
- 5. Primrose (Sul-R:1066)
- 6. Maize Yellow (Sul-R:1167)
- 7. Primrose (Sul-R:1066)
- 8. Cream (Sul-R:1022)
- 9. Moss Green (Sul-R:630)
- 10. Xmas Red (Sul-R:1147)

Gfe_bn3_6_vp3

5.05x4.62 inches; 25,950 stitches
10 thread changes; 7 colors



- 1. Lt. Plum (Sul-R:1297)
- 2. Primrose (Sul-R:1066)
- 3. Maize Yellow (Sul-R:1167)
- 4. Primrose (Sul-R:1066)
- 5. Cream (Sul-R:1022)
- 6. Moss Green (Sul-R:630)
- 7. Xmas Red (Sul-R:1147)

Gfe_bn3_7.vp3

3.04x2.93 inches; 13,941 stitches
7 thread changes; 6 colors



- 1. Lt. Plum (Sul-R:1297)
- 2. Primrose (Sul-R:1066)
- 3. Maize Yellow (Sul-R:1167)
- 4. Primrose (Sul-R:1066)
- 5. Cream (Sul-R:1022)
- 6. Moss Green (Sul-R:630)
- 7. Xmas Red (Sul-R:1147)

Gfe_bn3_8.vp3

3.04x2.93 inches; 13,941 stitches
7 thread changes; 6 colors



- 1. Dk. French Green (Sul-R:1286)
- 2. Cream (Sul-R:1022)
- 3. Soft White (Sul-R:1002)
- 4. Moss Green (Sul-R:630)
- 5. Primrose (Sul-R:1066)
- 6. Maize Yellow (Sul-R:1167)
- 7. Soft White (Sul-R:1002)
- 8. Lt. Plum (Sul-R:1297)
- 9. Xmas Red (Sul-R:1147)
- 10. Maize Yellow (Sul-R:1167)

Gfe_bn3_9.vp3

4.34x6.50 inches; 22,554 stitches
10 thread changes; 8 colors