



- 1. Off White (Sul-R:1071)
- 2. Soft White (Sul-R:1002)
- 3. Powder Blue Tint (Sul-R:1151)

Gfe-Lrb-3-1.vp3

3.10x6.65 inches; 8,230 stitches
3 thread changes; 3 colors



- 1. Off White (Sul-R:1071)
- 2. Soft White (Sul-R:1002)
- 3. Powder Blue Tint (Sul-R:1151)

Gfe-Lrb-3-10.vp3

3.51x8.65 inches; 10,837 stitches
3 thread changes; 3 colors



- 1. Off White (Sul-R:1071)
- 2. Soft White (Sul-R:1002)
- 3. Powder Blue Tint (Sul-R:1151)

Gfe-Lrb-3-11.vp3

5.15x7.73 inches; 12,520 stitches
3 thread changes; 3 colors



- 1. Off White (Sul-R:1071)
- 2. Soft White (Sul-R:1002)
- 3. Powder Blue Tint (Sul-R:1151)
- 4. Soft White (Sul-R:1002)

Gfe-Lrb-3-12.vp3

4.28x7.50 inches; 12,159 stitches
4 thread changes; 3 colors



- 1. Off White (Sul-R:1071)
- 2. Powder Blue Tint (Sul-R:1151)

Gfe-Lrb-3-13.vp3

5.37x9.19 inches; 10,178 stitches
2 thread changes; 2 colors



- 1. Off White (Sul-R:1071)
- 2. Soft White (Sul-R:1002)
- 3. Powder Blue Tint (Sul-R:1151)

Gfe-Lrb-3-14.vp3

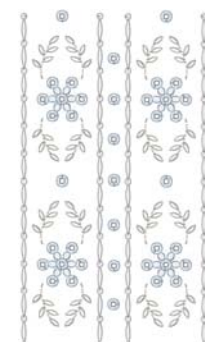
2.41x9.41 inches; 12,173 stitches
3 thread changes; 3 colors



- 1. Off White (Sul-R:1071)
- 2. Soft White (Sul-R:1002)
- 3. Powder Blue Tint (Sul-R:1151)

Gfe-Lrb-3-15.vp3

4.47x9.41 inches; 21,965 stitches
3 thread changes; 3 colors



- 1. Off White (Sul-R:1071)
- 2. Soft White (Sul-R:1002)
- 3. Powder Blue Tint (Sul-R:1151)
- 4. Soft White (Sul-R:1002)

Gfe-Lrb-3-16.vp3

3.99x7.21 inches; 13,795 stitches
4 thread changes; 3 colors



- 1. Off White (Sul-R:1071)
- 2. Soft White (Sul-R:1002)
- 3. Powder Blue Tint (Sul-R:1151)

Gfe-Lrb-3-2.vp3

4.44x9.36 inches; 14,874 stitches
3 thread changes; 3 colors



- 1. Off White (Sul-R:1071)
- 2. Powder Blue Tint (Sul-R:1151)

Gfe-Lrb-3-3.vp3

3.30x8.98 inches; 7,520 stitches
2 thread changes; 2 colors



- 1. Off White (Sul-R:1071)
- 2. Soft White (Sul-R:1002)
- 3. Powder Blue Tint (Sul-R:1151)

Gfe-Lrb-3-4.vp3

3.15x9.32 inches; 13,486 stitches
3 thread changes; 3 colors



- 1. Off White (Sul-R:1071)
- 2. Soft White (Sul-R:1002)
- 3. Powder Blue Tint (Sul-R:1151)

Gfe-Lrb-3-5.vp3

5.32x7.22 inches; 10,598 stitches
3 thread changes; 3 colors



- 1. Off White (Sul-R:1071)
- 2. Soft White (Sul-R:1002)
- 3. Powder Blue Tint (Sul-R:1151)
- 4. Soft White (Sul-R:1002)

Gfe-Lrb-3-6.vp3

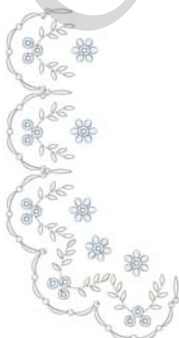
2.06x7.51 inches; 6,842 stitches
4 thread changes; 3 colors



- 1. Off White (Sul-R:1071)
- 2. Soft White (Sul-R:1002)
- 3. Powder Blue Tint (Sul-R:1151)

Gfe-Lrb-3-7.vp3

4.18x9.21 inches; 11,478 stitches
3 thread changes; 3 colors



- 1. Off White (Sul-R:1071)
- 2. Soft White (Sul-R:1002)
- 3. Powder Blue Tint (Sul-R:1151)
- 4. Soft White (Sul-R:1002)
- 5. Soft White (Sul-R:1002)

Gfe-Lrb-3-8.vp3

3.91x7.56 inches; 8,273 stitches
5 thread changes; 3 colors



- 1. Off White (Sul-R:1071)
- 2. Soft White (Sul-R:1002)
- 3. Powder Blue Tint (Sul-R:1151)

Gfe-Lrb-3-9.vp3

3.63x8.94 inches; 10,463 stitches
3 thread changes; 3 colors