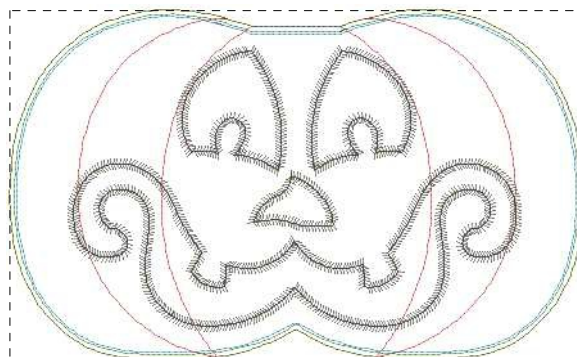
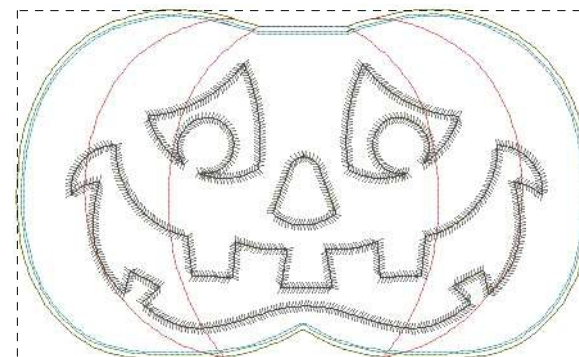


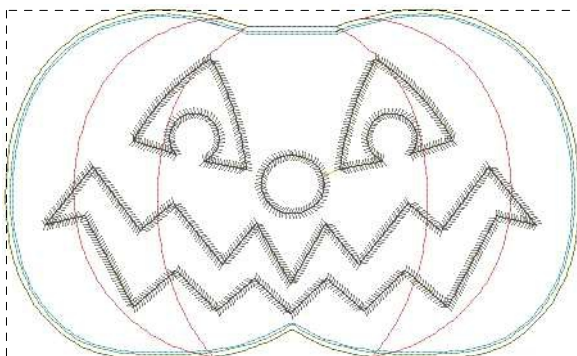
Pumpkin 1.pes
255.00x155.20 mm; 8,206 stitches
10 thread changes; 10 colors



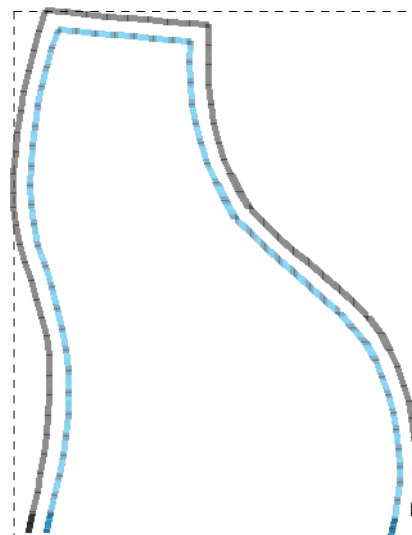
Pumpkin 2.pes
255.00x155.20 mm; 9,024 stitches
10 thread changes; 10 colors



Pumpkin 3.pes
255.00x155.20 mm; 9,415 stitches
10 thread changes; 10 colors



Pumpkin 4.pes
255.00x155.20 mm; 8,587 stitches
10 thread changes; 10 colors



Stalk.pes
46.00x60.20 mm; 143 stitches
2 thread changes; 2 colors