

Design A Stitch

Embroidery designs that smile back



Design Name: DASS00101093-Willow Block 2

Hoop sizes: 4x4,5x5,6x6,7x7,8x8,9x9,10x10,12x12,14x14

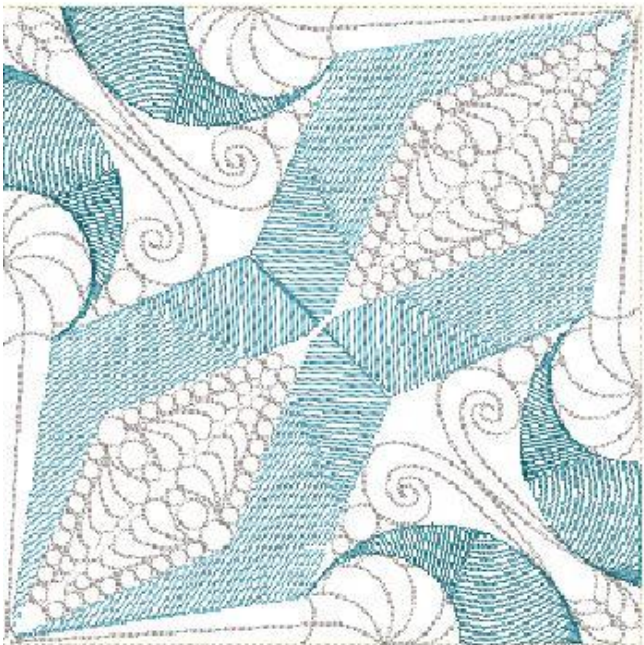
Notes:

Design:Block2-8x8.EMB

Height: 195.0 mm
 Width: 195.0 mm
 Stitches: 16 405
 Colors: 4
 Color changes: 3
 Trims: 8
 Machine format: Janome
 Hoop: RICOMA EM1010 (310 X 210) - 12.2" X 8.2"
 Fabric type: Pure Cotton
 Required stabilizer: Topping:
 Backing: Tear Away x 2
 Total bobbin: 28.08m

Color Sequence:

#	Color	Element	Code	Name	Chart
1.	1		1007	Summer Citrus	Marathon 100% Viscose Rayon
2.	9		0142	Sterling	Hatch Default
3.	6		1270	Temperate Ocean	Marathon 100% Viscose Rayon
4.	8		1108	Blue Spruce	Marathon 100% Viscose Rayon

**THANK YOU FOR YOUR PURCHASE FROM OREGONPATCHWORKS INC**

Welcome to the OPW Mall, where YOU are always #1. We will do our best to make your visits enjoyable and informative. Please invite your embroidery and quilting friends to visit us also. It is great customers who have kept us going for nearly 20 years and we invite you to join our family of friends. We are here to assist you, we are just an email, chat or phone call away. Have a blessed day!

LEAVE US A GOOGLE REVIEW: To add a review, copy and paste this link to your browser:

www.tinyurl.com/yxzsv8zu

COPYRIGHT STATEMENT

www.oregonpatchworks.com

The original copyright of these files is owned with all rights reserved by the creator of the original files.

YOU HAVE PURCHASED A LICENSE TO USE THESE ELECTRONIC FILES ONLY.

When you purchase or download from OregonPatchWorks Inc, you are granted a single-user license of the files to create stitch outs from them.

The ownership of the design stitch files and related graphic files is retained by craftsperson who created them.

These digitized embroidery designs and graphics are protected under USA Federal Copyright Law & International Treaties.

The designs and graphic files themselves, or any part thereof, cannot be sold, duplicated or shared in any way and are for use by the original purchaser/user only.

The user license covers the following uses:

Unless otherwise stated in the digitizer's own copyright statement, the user may stitch out the designs on finished projects for personal use, gifts or projects for sale by the original purchaser only. If the finished project items or stitch-outs are displayed for sale online or in a physical location (store), credit to the digitizer and link to www.oregonpatchworks.com is required.

This license does not cover mass production (50 or more identical items) without additional permissions.

Transference of these files to any other person or group is strictly prohibited.

You may not lend, give away or sell the files to anyone else EVER. You may not change, add to, delete parts of, or alter the files and then call them your own. You may personalize the designs with lettering for personal use only.

You cannot send them via email or by any other method to another embroiderer to be split or changed in any way.

Any alteration requests should be directed to support@oregonpatchworks.com and will be forwarded to the owner of the copyright.

Other specific copyright policies of the individual copyright owner may be included in the download and will supersede the policies listed in this document

FOR MORE WONDERFUL DESIGNS VISIT US AGAIN SOON AT OREGONPATCHWORKS PREMIUM EMBROIDERY DESIGNS MALL

The OPW Mall - Where your dreams become a reality, one stitch at a time.

We hope to serve you again soon. Feel free to contact us at any time.

support@oregonpatchworks.com www.oregonpatchworks.com

The copyright of the design is registered to DesignAStitch. You may sell the projects you make using these designs, but the designs in their original digital format is not to be shared, sold or distributed in any way. I do not recommend that you convert the designs in other formats as this might lead to poor quality in the converted format, please obtain the required format directly from us.