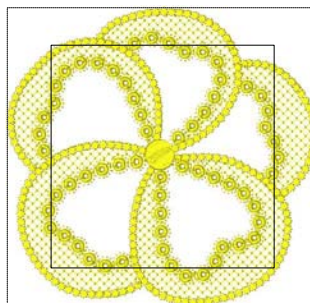


■ 1. River Mist (Isa:3962)

Dad016a 1.pes

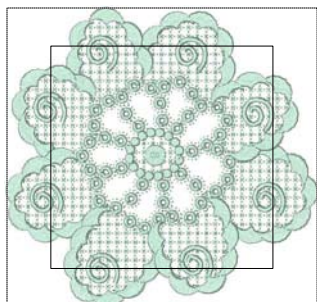
5.09x5.49 inches; 14,016 stitches
1 thread changes; 1 colors



■ 1. Citrus (Isa:600)

Dad016a 10.pes

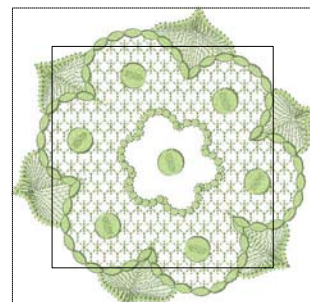
5.49x5.26 inches; 15,359 stitches
1 thread changes; 1 colors



■ 1. Ghost Green (BER:30)

Dad016a 2.pes

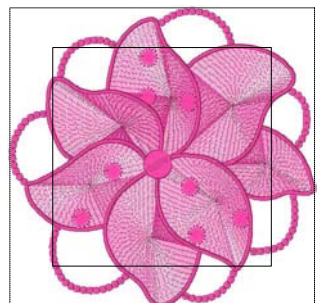
5.49x5.28 inches; 19,871 stitches
1 thread changes; 1 colors



■ 1. Kiwi (Isa:5822)

Dad016a 3.pes

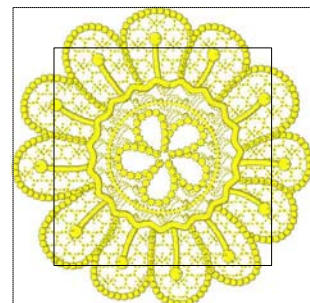
5.35x5.30 inches; 12,511 stitches
1 thread changes; 1 colors



■ 1. Bright Ruby (Isa:2300)

Dad016a 4.pes

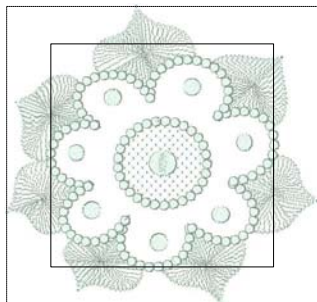
5.48x5.36 inches; 15,915 stitches
1 thread changes; 1 colors



■ 1. Citrus (Isa:600)

Dad016a 5.pes

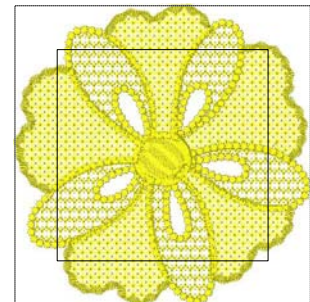
5.42x5.39 inches; 15,735 stitches
1 thread changes; 1 colors



■ 1. Luster (Isa:5050)

Dad016a 6.pes

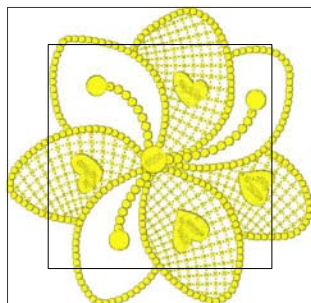
5.50x5.26 inches; 11,193 stitches
1 thread changes; 1 colors



■ 1. Citrus (Isa:600)

Dad016a 7.pes

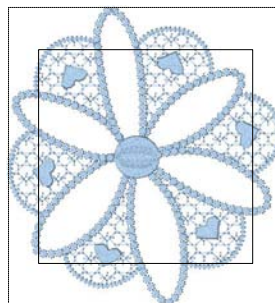
5.51x5.57 inches; 20,861 stitches
1 thread changes; 1 colors



■ 1. Citrus (Isa:600)

Dad016a 8.pes

5.37x5.25 inches; 12,207 stitches
1 thread changes; 1 colors



■ 1. Lake Blue (Isa:3640)

Dad016a 9.pes

5.05x5.50 inches; 8,100 stitches
1 thread changes; 1 colors