

- 1. Silver Grey (Mar:1454)
- 2. Peach (Mar:1039)
- 3. Black (BER:13)
- 4. Red (Mar:1050)
- 5. Pink (Mar:1023)
- 6. Black (BER:13)
- 7. White (BER:15)
- 8. Black (BER:13)
- 9. White (BER:15)

**Moon1.art**

85.20x121.60 mm; 12,408 stitches  
9 thread changes; 6 colors



- 1. Light Blue (Mar:1198)
- 2. Green (Mar:1171)
- 3. Flesh (Mar:1131)
- 4. Pink (Mar:1023)
- 5. Steel Blue (Mar:1176)
- 6. Palm (Mar:1445)
- 7. White (BER:15)
- 8. Black (BER:13)

**Moon10.art**

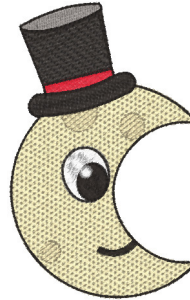
96.60x98.70 mm; 10,084 stitches  
8 thread changes; 8 colors



- 1. Light Blue (Mar:1058)
- 2. Pale Yellow (Mar:1010)
- 3. Flesh (Mar:1131)
- 4. Pink (Mar:1023)
- 5. Flesh (Mar:1131)
- 6. Light Turquoise (Mar:1099)
- 7. Silver Grey (Mar:1454)
- 8. White (BER:15)
- 9. Black (BER:13)
- 10. Light Blue (Mar:1197)

**Moon2.art**

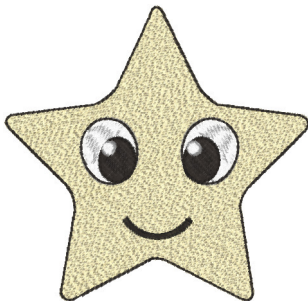
120.30x106.80 mm; 11,809 stitches  
10 thread changes; 9 colors



- 1. Pale Yellow (Mar:1010)
- 2. Storm Grey (Mar:1455)
- 3. Black (BER:13)
- 4. Red (Mar:1050)
- 5. Black (BER:13)
- 6. White (BER:15)
- 7. Buttercream (Mar:1449)
- 8. Black (BER:13)
- 9. White (BER:15)

**Moon3.art**

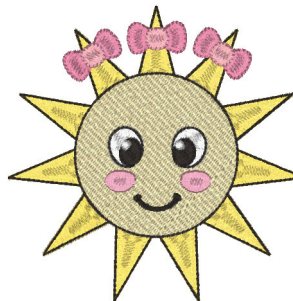
74.60x118.10 mm; 9,640 stitches  
9 thread changes; 6 colors



- 1. Pale Yellow (Mar:1010)
- 2. White (BER:15)
- 3. Black (BER:13)
- 4. White (BER:15)

**Moon4.art**

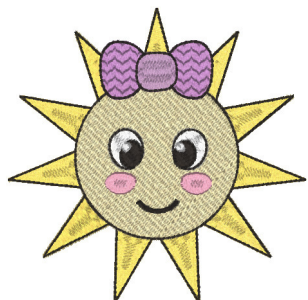
111.10x107.60 mm; 10,111 stitches  
4 thread changes; 3 colors



- 1. Jonquil Yellow (Mar:1011)
- 2. Pale Yellow (Mar:1010)
- 3. Pink (Mar:1023)
- 4. White (BER:15)
- 5. Black (BER:13)
- 6. Fuschia (Mar:1028)
- 7. Pink (Mar:1192)
- 8. White (BER:15)

**Moon5.art**

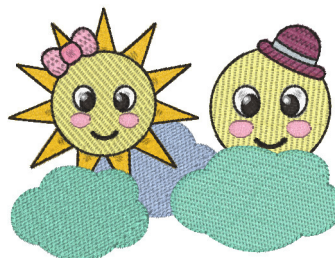
116.20x115.10 mm; 13,030 stitches  
8 thread changes; 7 colors



- 1. Jonquil Yellow (Mar:1011)
- 2. Pale Yellow (Mar:1010)
- 3. Pink (Mar:1023)
- 4. White (BER:15)
- 5. Black (BER:13)
- 6. White (BER:15)
- 7. Light Purple (Mar:1077)
- 8. Light Purple (Mar:1078)
- 9. Black (BER:13)

**Moon6.art**

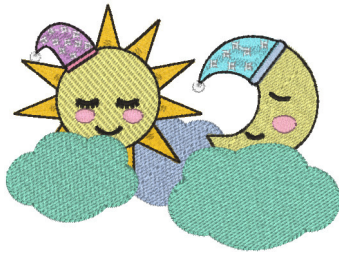
116.20x115.10 mm; 12,651 stitches  
9 thread changes; 7 colors



- 1. Light Blue (Mar:1197)
- 2. Gold (Mar:1404)
- 3. Yellow (Mar:1004)
- 4. Pink (Mar:1023)
- 5. White (BER:15)
- 6. Pink (Mar:1023)
- 7. Fuschia (Mar:1028)
- 8. Raspberry (Mar:1331)
- 9. Nickel Grey (Mar:1401)
- 10. Black (BER:13)
- 11. Light Green (Mar:1113)
- 12. White (BER:15)

**Moon7.art**

125.20x94.50 mm; 16,712 stitches  
12 thread changes; 10 colors



- 1. Light Blue (Mar:1197)
- 2. Gold (Mar:1404)
- 3. Yellow (Mar:1004)
- 4. Pink (Mar:1023)
- 5. Light Purple (Mar:1077)
- 6. Fuschia (Mar:1028)
- 7. Light Blue (Mar:1198)
- 8. Light Turquoise (Mar:1099)
- 9. White (BER:15)
- 10.Black (BER:13)
- 11.Light Green (Mar:1113)

**Moon8.art**

126.50x92.60 mm; 14,163 stitches  
11 thread changes; 11 colors



- 1. Flesh (Mar:1131)
- 2. Light Blue (Mar:1058)
- 3. Nickel Grey (Mar:1401)
- 4. White (BER:15)
- 5. Black (BER:13)

**Moon9.art**

92.90x97.70 mm; 7,753 stitches  
5 thread changes; 5 colors