



- 1. White (Def:14)
- 2. Brown (Mar:1224)
- 3. Flesh (Mar:1326)
- 4. Light Pink (Mar:1020)
- 5. White (Def:14)
- 6. Brown (Mar:1224)
- 7. Nickel Grey (Mar:1401)
- 8. Flesh (Mar:1326)
- 9. Black (Def:15)

Angel 1(8x12).art

5.04x10.44 inches; 38,837 stitches
9 thread changes; 6 colors



- 1. Light Purple (Mar:1078)
- 2. White (Def:14)
- 3. Brown (Mar:1224)
- 4. Flesh (Mar:1326)
- 5. Light Pink (Mar:1020)
- 6. White (Def:14)
- 7. Brown (Mar:1224)
- 8. Nickel Grey (Mar:1401)
- 9. Flesh (Mar:1326)
- 10. Black (Def:15)

Angel 1a(8x12).art

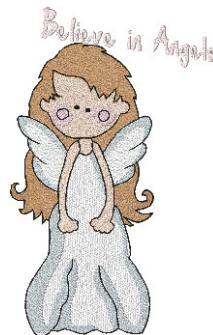
6.21x8.93 inches; 27,398 stitches
10 thread changes; 7 colors



- 1. Tan (Mar:1141)
- 2. Flesh (Mar:1326)
- 3. Tan (Mar:1141)
- 4. Light Pink (Mar:1020)
- 5. White (Def:14)
- 6. Nickel Grey (Mar:1401)
- 7. Flesh (Mar:1326)
- 8. Black (Def:15)

Angel 2(8x12).art

4.98x10.23 inches; 47,570 stitches
8 thread changes; 6 colors



- 1. Tan (Mar:1141)
- 2. Flesh (Mar:1326)
- 3. Tan (Mar:1141)
- 4. Light Pink (Mar:1020)
- 5. White (Def:14)
- 6. Nickel Grey (Mar:1401)
- 7. Flesh (Mar:1326)
- 8. Black (Def:15)
- 9. Light Pink (Mar:1019)

Angel 2a(8x12).art

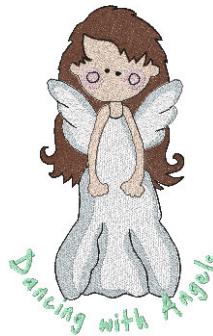
7.18x11.48 inches; 50,694 stitches
9 thread changes; 7 colors



- 1. Light Brown (Mar:1161)
- 2. Flesh (Mar:1326)
- 3. Light Brown (Mar:1161)
- 4. Light Pink (Mar:1020)
- 5. White (Def:14)
- 6. Nickel Grey (Mar:1401)
- 7. Flesh (Mar:1326)
- 8. Black (Def:15)

Angel 3(8x12).art

4.98x10.23 inches; 47,573 stitches
8 thread changes; 6 colors



- 1. Light Brown (Mar:1161)
- 2. Flesh (Mar:1326)
- 3. Light Brown (Mar:1161)
- 4. Light Pink (Mar:1020)
- 5. White (Def:14)
- 6. Nickel Grey (Mar:1401)
- 7. Flesh (Mar:1326)
- 8. Black (Def:15)
- 9. Light Kelly (Mar:1111)

Angel 3a(8x12).art

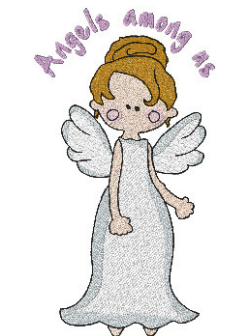
7.23x11.42 inches; 50,232 stitches
9 thread changes; 7 colors



- 1. White (Def:14)
- 2. Brown (Mar:1224)
- 3. Flesh (Mar:1326)
- 4. Light Pink (Mar:1020)
- 5. White (Def:14)
- 6. Brown (Mar:1224)
- 7. Nickel Grey (Mar:1401)
- 8. Flesh (Mar:1326)
- 9. Black (Def:15)

Angel 4(8x12).art

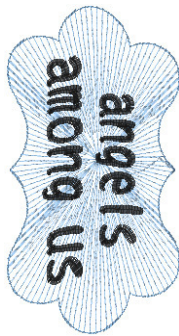
5.04x10.43 inches; 38,822 stitches
9 thread changes; 6 colors



- 1. White (Def:14)
- 2. Brown (Mar:1224)
- 3. Flesh (Mar:1326)
- 4. Light Pink (Mar:1020)
- 5. White (Def:14)
- 6. Brown (Mar:1224)
- 7. Nickel Grey (Mar:1401)
- 8. Flesh (Mar:1326)
- 9. Black (Def:15)
- 10. Light Purple (Mar:1078)

Angel 4a(8x12).art

6.21x11.40 inches; 41,851 stitches
10 thread changes; 7 colors



- 1. Light Blue (Mar:1058)
- 2. Black (Def:15)

Angel Among Us.art
3.69x7.09 inches; 6,885 stitches
2 thread changes; 2 colors



- 1. Light Purple (Mar:1078)

Angels Among Us.art
1.37x6.81 inches; 3,126 stitches
1 thread changes; 1 colors



- 1. Light Pink (Mar:1019)

Believe In Angels .art
1.36x6.82 inches; 3,116 stitches
1 thread changes; 1 colors



- 1. Pink (Mar:1193)
- 2. Fuschia (Mar:1028)

Believe In Angels.art
5.83x5.70 inches; 7,799 stitches
2 thread changes; 2 colors



- 1. Light Kelly (Mar:1111)

Dancing With Angels 1.art
1.15x7.00 inches; 3,285 stitches
1 thread changes; 1 colors



- 1. Light Blue (Mar:1058)
- 2. Pink (Mar:1023)
- 3. Light Purple (Mar:1078)

Dancing With Angels 2.art
7.75x7.84 inches; 10,479 stitches
3 thread changes; 3 colors



- 1. Pale Yellow (Mar:1010)
- 2. Black (Def:15)

Dancing With Angels.art
5.86x3.29 inches; 6,051 stitches
2 thread changes; 2 colors