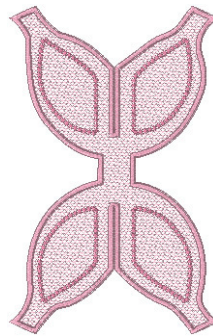


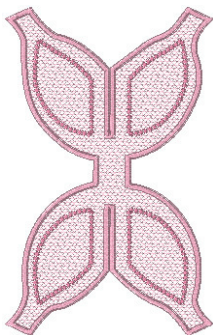
- 1. Pink (Mar:1023)
- 2. Fuschia (Mar:1028)

Cce125_3a.art
5.99x9.48 inches; 20,050 stitches
2 thread changes; 2 colors



- 1. Pink (Mar:1023)
- 2. Fuschia (Mar:1028)

Cce125_3a_med.art
5.39x8.53 inches; 17,770 stitches
2 thread changes; 2 colors



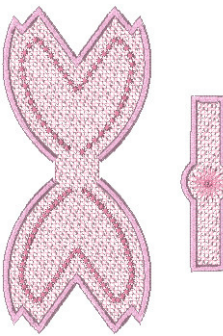
- 1. Pink (Mar:1023)
- 2. Fuschia (Mar:1028)

Cce125_3a_sml.art
4.85x7.69 inches; 15,816 stitches
2 thread changes; 2 colors



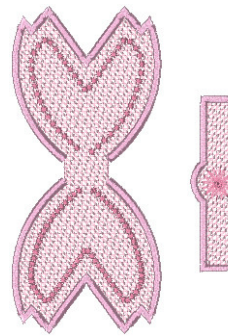
- 1. Pink (Mar:1023)
- 2. Fuschia (Mar:1028)
- 3. Pink (Mar:1193)

Cce125_3b.art
5.56x7.83 inches; 14,950 stitches
3 thread changes; 3 colors



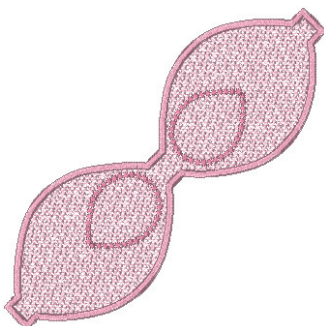
- 1. Pink (Mar:1023)
- 2. Fuschia (Mar:1028)
- 3. Pink (Mar:1193)

Cce125_3b_med.art
5.01x7.05 inches; 13,098 stitches
3 thread changes; 3 colors



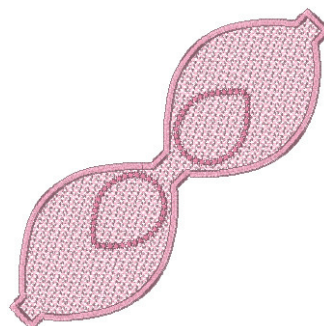
- 1. Pink (Mar:1023)
- 2. Fuschia (Mar:1028)
- 3. Pink (Mar:1193)

Cce125_3b_sml.art
4.51x6.35 inches; 11,623 stitches
3 thread changes; 3 colors



- 1. Pink (Mar:1023)
- 2. Fuschia (Mar:1028)

Cce125_3c.art
7.16x7.15 inches; 10,556 stitches
2 thread changes; 2 colors



- 1. Pink (Mar:1023)
- 2. Fuschia (Mar:1028)

Cce125_3c_med.art
6.44x6.44 inches; 9,237 stitches
2 thread changes; 2 colors

