



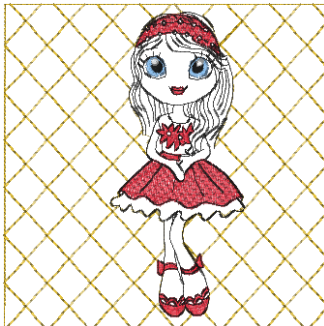
- 1. Red (Mar:1050)
- 2. Black (Def:15)

**Lovely 1(6x6).art**  
2.52x5.88 inches; 7,996 stitches  
2 thread changes; 2 colors



- 1. Light Blue (Mar:1058)
- 2. Black (Def:15)
- 3. White (Def:14)
- 4. Red (Mar:1050)
- 5. Black (Def:15)

**Lovely 10(6x6).art**  
2.58x5.90 inches; 7,104 stitches  
5 thread changes; 4 colors



- 1. Old Gold (Mar:1187)
- 2. Light Blue (Mar:1058)
- 3. Black (Def:15)
- 4. White (Def:14)
- 5. Red (Mar:1050)
- 6. Black (Def:15)

**Lovely 10a(6x6).art**  
5.88x5.88 inches; 9,925 stitches  
6 thread changes; 5 colors



- 1. Old Gold (Mar:1187)
- 2. Red (Mar:1050)
- 3. Black (Def:15)

**Lovely 1a(6x6).art**  
5.88x5.88 inches; 10,576 stitches  
3 thread changes; 3 colors



- 1. Red (Mar:1050)
- 2. Light Blue (Mar:1058)
- 3. Black (Def:15)
- 4. White (Def:14)
- 5. Black (Def:15)

**Lovely 2(6x6).art**  
2.37x5.90 inches; 8,545 stitches  
5 thread changes; 4 colors



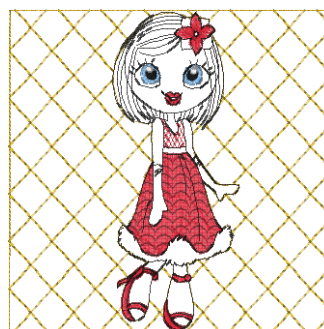
- 1. Old Gold (Mar:1187)
- 2. Red (Mar:1050)
- 3. Light Blue (Mar:1058)
- 4. Black (Def:15)
- 5. White (Def:14)
- 6. Black (Def:15)

**Lovely 2a(6x6).art**  
5.88x5.88 inches; 11,892 stitches  
6 thread changes; 5 colors



- 1. Red (Mar:1050)
- 2. Light Blue (Mar:1058)
- 3. Black (Def:15)
- 4. White (Def:14)
- 5. Black (Def:15)

**Lovely 3(6x6).art**  
2.33x5.87 inches; 6,413 stitches  
5 thread changes; 4 colors



- 1. Old Gold (Mar:1187)
- 2. Red (Mar:1050)
- 3. Light Blue (Mar:1058)
- 4. Black (Def:15)
- 5. White (Def:14)
- 6. Black (Def:15)

**Lovely 3a(6x6).art**  
5.88x5.88 inches; 9,517 stitches  
6 thread changes; 5 colors



- 1. Red (Mar:1050)
- 2. Black (Def:15)

**Lovely 4(6x6).art**  
3.06x5.88 inches; 8,029 stitches  
2 thread changes; 2 colors



- 1. Old Gold (Mar:1187)
- 2. Red (Mar:1050)
- 3. Black (Def:15)

**Lovely 4a(6x6).art**  
5.88x5.88 inches; 11,096 stitches  
3 thread changes; 3 colors



- 1. Red (Mar:1050)
- 2. Light Blue (Mar:1058)
- 3. Black (Def:15)
- 4. White (Def:14)
- 5. Black (Def:15)

**Lovely 5(6x6).art**  
3.70x4.91 inches; 11,446 stitches  
5 thread changes; 4 colors



- 1. Old Gold (Mar:1187)
- 2. Red (Mar:1050)
- 3. Light Blue (Mar:1058)
- 4. Black (Def:15)
- 5. White (Def:14)
- 6. Black (Def:15)

**Lovely 5a(6x6).art**  
5.11x5.11 inches; 14,136 stitches  
6 thread changes; 5 colors



- 1. Red (Mar:1050)
- 2. Light Blue (Mar:1058)
- 3. Black (Def:15)
- 4. White (Def:14)
- 5. Black (Def:15)

**Lovely 6(6x6).art**  
2.74x5.89 inches; 6,793 stitches  
5 thread changes; 4 colors



- 1. Old Gold (Mar:1187)
- 2. Red (Mar:1050)
- 3. Light Blue (Mar:1058)
- 4. Black (Def:15)
- 5. White (Def:14)
- 6. Black (Def:15)

**Lovely 6a(6x6).art**  
5.88x5.88 inches; 9,590 stitches  
6 thread changes; 5 colors



- 1. Red (Mar:1050)
- 2. Light Blue (Mar:1058)
- 3. Black (Def:15)
- 4. White (Def:14)
- 5. Black (Def:15)

**Lovely 7(6x6).art**  
2.83x5.87 inches; 5,855 stitches  
5 thread changes; 4 colors



- 1. Old Gold (Mar:1187)
- 2. Red (Mar:1050)
- 3. Light Blue (Mar:1058)
- 4. Black (Def:15)
- 5. White (Def:14)
- 6. Black (Def:15)

**Lovely 7a(6x6).art**  
5.88x5.88 inches; 8,978 stitches  
6 thread changes; 5 colors



- 1. Light Blue (Mar:1058)
- 2. Black (Def:15)
- 3. White (Def:14)
- 4. Red (Mar:1050)
- 5. Black (Def:15)

**Lovely 8(6x6).art**

2.48x5.88 inches; 8,691 stitches  
5 thread changes; 4 colors



- 1. Old Gold (Mar:1187)
- 2. Light Blue (Mar:1058)
- 3. Black (Def:15)
- 4. White (Def:14)
- 5. Red (Mar:1050)
- 6. Black (Def:15)

**Lovely 8a(6x6).art**

5.88x5.88 inches; 11,461 stitches  
6 thread changes; 5 colors



- 1. Light Blue (Mar:1058)
- 2. Black (Def:15)
- 3. White (Def:14)
- 4. Red (Mar:1050)
- 5. Black (Def:15)

**Lovely 9(6x6).art**

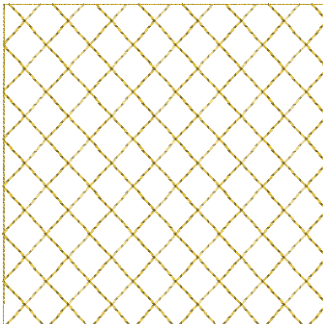
3.31x5.87 inches; 6,250 stitches  
5 thread changes; 4 colors



- 1. Old Gold (Mar:1187)
- 2. Light Blue (Mar:1058)
- 3. Black (Def:15)
- 4. White (Def:14)
- 5. Red (Mar:1050)
- 6. Black (Def:15)

**Lovely 9a(6x6).art**

5.88x5.88 inches; 9,064 stitches  
6 thread changes; 5 colors



- 1. Old Gold (Mar:1187)

**Quilt Back6x6.art**

5.88x5.88 inches; 3,034 stitches  
1 thread changes; 1 colors