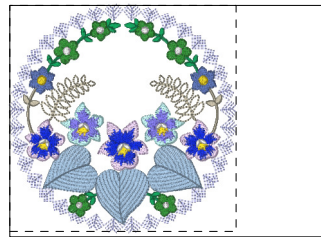


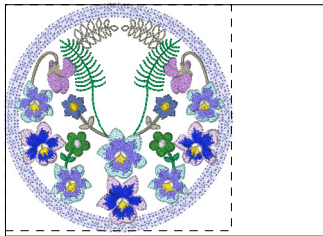
- 1. Corn Flower Blue
- 2. Silver
- 3. Wisteria Violet
- 4. Silver
- 5. Teal Green
- 6. Lavender
- 7. Ultramarine
- 8. Light Blue
- 9. electric blue2
- 10. cornflower blue2
- 11. Emerald Green
- 12. Harvest Gold
- 13. White

**Ajd208\_aljay\_bv5x7s101.pes**  
5.00x5.00 inches; 19,404 stitches  
13 thread changes; 12 colors



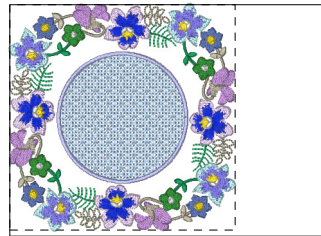
- 1. Corn Flower Blue
- 2. Silver
- 3. Teal Green
- 4. Emerald Green
- 5. cornflower blue2
- 6. sky blue4
- 7. Lavender
- 8. Ultramarine
- 9. Light Blue
- 10. electric blue2
- 11. Harvest Gold
- 12. White

**Ajd208\_aljay\_bv5x7s102.pes**  
5.00x5.00 inches; 19,186 stitches  
12 thread changes; 12 colors



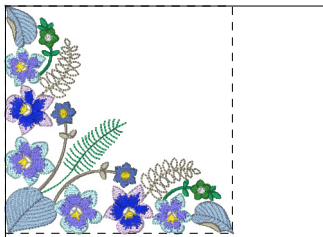
- 1. Corn Flower Blue
- 2. Wisteria Violet
- 3. Silver
- 4. Gray
- 5. Teal Green
- 6. Emerald Green
- 7. cornflower blue2
- 8. Lavender
- 9. Ultramarine
- 10. Light Blue
- 11. electric blue2
- 12. Harvest Gold
- 13. White

**Ajd208\_aljay\_bv5x7s103.pes**  
5.00x5.00 inches; 21,333 stitches  
13 thread changes; 13 colors



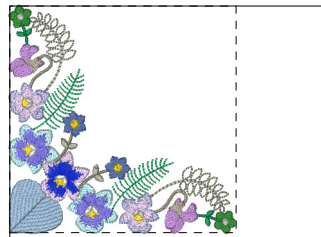
- 1. sky blue4
- 2. Corn Flower Blue
- 3. Silver
- 4. Teal Green
- 5. Wisteria Violet
- 6. Silver
- 7. Lavender
- 8. Ultramarine
- 9. Light Blue
- 10. electric blue2
- 11. Emerald Green
- 12. cornflower blue2
- 13. Harvest Gold
- 14. White

**Ajd208\_aljay\_bv5x7s104.pes**  
4.98x4.98 inches; 27,314 stitches  
14 thread changes; 13 colors



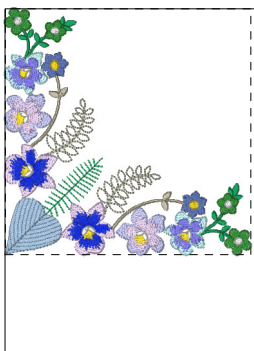
- 1. Teal Green
- 2. Silver
- 3. sky blue4
- 4. Silver
- 5. Lavender
- 6. Ultramarine
- 7. Light Blue
- 8. electric blue2
- 9. Emerald Green
- 10. cornflower blue2
- 11. Harvest Gold
- 12. White

**Ajd208\_aljay\_bv5x7s105.pes**  
5.02x5.02 inches; 17,016 stitches  
12 thread changes; 11 colors



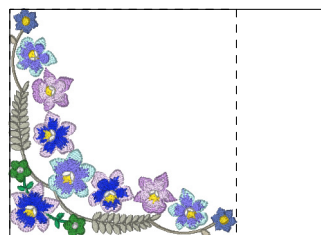
- 1. Teal Green
- 2. Wisteria Violet
- 3. Silver
- 4. Gray
- 5. sky blue4
- 6. Lavender
- 7. Ultramarine
- 8. Light Blue
- 9. electric blue2
- 10. Corn Flower Blue
- 11. Lavender
- 12. Emerald Green
- 13. cornflower blue2
- 14. Harvest Gold
- 15. White

**Ajd208\_aljay\_bv5x7s106.pes**  
5.00x5.01 inches; 15,528 stitches  
15 thread changes; 14 colors



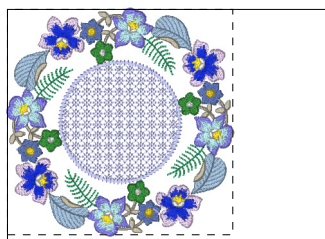
- 1. Teal Green
- 2. Silver
- 3. Gray
- 4. sky blue4
- 5. Lavender
- 6. Ultramarine
- 7. Corn Flower Blue
- 8. Lavender
- 9. Light Blue
- 10. electric blue2
- 11. Emerald Green
- 12. cornflower blue2
- 13. Harvest Gold
- 14. White

**Ajd208\_aljay\_bv5x7s107.pes**  
4.99x5.00 inches; 16,104 stitches  
14 thread changes; 13 colors



- 1. Silver
- 2. Gray
- 3. Teal Green
- 4. Lavender
- 5. Ultramarine
- 6. Light Blue
- 7. electric blue2
- 8. Wisteria Violet
- 9. Lavender
- 10. Emerald Green
- 11. cornflower blue2
- 12. Harvest Gold
- 13. White

**Ajd208\_aljay\_bv5x7s108.pes**  
5.01x5.00 inches; 16,468 stitches  
13 thread changes; 12 colors



- 1. Corn Flower Blue
- 2. Teal Green
- 3. Silver
- 4. sky blue4
- 5. Silver
- 6. cornflower blue2
- 7. Lavender
- 8. Ultramarine
- 9. electric blue2
- 10. Light Blue
- 11. Emerald Green
- 12. Harvest Gold
- 13. White

**Ajd208\_aljay\_sample.pes**  
4.98x4.98 inches; 23,673 stitches  
13 thread changes; 12 colors