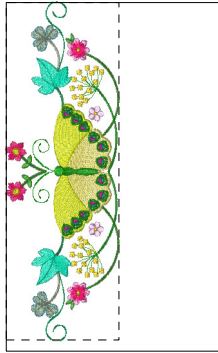
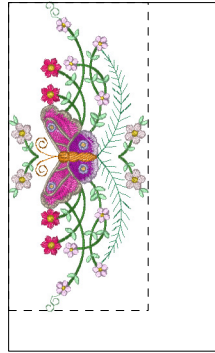


Printed 8/5/2021



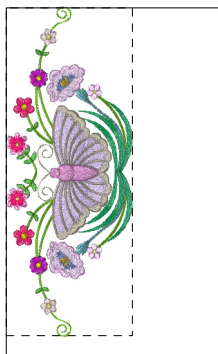
- | | |
|---------------|------------------|
| 1. Seacrest | 10. Light Lilac |
| 2. sky blue2 | 11. Harvest Gold |
| 3. Seacrest | 12. Cream Yellow |
| 4. Leaf Green | 13. yellow2 |
| 5. Teal Green | 14. Lemon Yellow |
| 6. sky blue5 | 15. Moss Green |
| 7. Deep Rose | 16. Harvest Gold |
| 8. Pink | 17. Royal Purple |
| 9. Deep Rose | 18. Teal Green |

Ajd206_aljay_bb6x10xls101.pes
3.31x9.91 inches; 24,403 stitches
18 thread changes; 14 colors



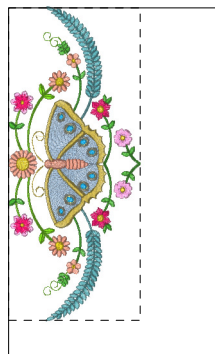
- | |
|----------------------|
| 1. Teal Green |
| 2. Leaf Green |
| 3. leaf green2 |
| 4. Deep Rose |
| 5. flesh pink2 |
| 6. Light Lilac |
| 7. Harvest Gold |
| 8. Deep Gold |
| 9. magenta2 |
| 10. Lavender |
| 11. Dark Fuchsia |
| 12. Corn Flower Blue |
| 13. Warm Gray |
| 14. Clay Brown |

Ajd206_aljay_bb6x10xls102.pes
4.10x9.05 inches; 21,771 stitches
14 thread changes; 14 colors



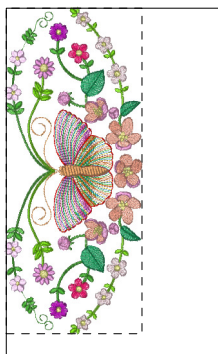
- | | |
|----------------|----------------------|
| 1. Lime Green | 11. Harvest Gold |
| 2. Leaf Green | 12. Lemon Yellow |
| 3. sky blue2 | 13. Lavender |
| 4. Teal Green | 14. cornflower blue2 |
| 5. Pink | 15. Harvest Gold |
| 6. Deep Rose | 16. Lavender |
| 7. flesh pink2 | 17. Light Lilac |
| 8. Light Lilac | 18. lilac2 |
| 9. Deep Rose | 19. Silver |
| 10. magenta2 | 20. Lilac |

Ajd206_aljay_bb6x10xls103.pes
3.70x9.63 inches; 24,867 stitches
20 thread changes; 16 colors



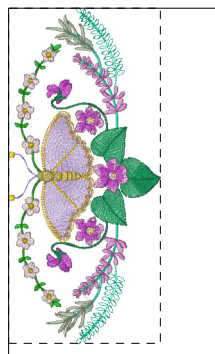
- | | |
|----------------|------------------|
| 1. sky blue2 | 9. Deep Rose |
| 2. Lime Green | 10. Harvest Gold |
| 3. Leaf Green | 11. sky blue4 |
| 4. Salmon Pink | 12. Brass |
| 5. Pink | 13. Lemon Yellow |
| 6. Deep Rose | 14. sky blue3 |
| 7. Pink | 15. Gray |
| 8. Salmon Pink | 16. Salmon Pink |

Ajd206_aljay_bb6x10xls104.pes
3.87x9.17 inches; 24,459 stitches
16 thread changes; 12 colors



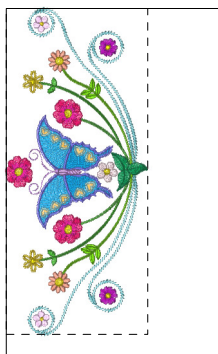
- | | |
|-----------------|-------------------|
| 1. Leaf Green | 11. Lemon Yellow |
| 2. Lime Green | 12. Lavender |
| 3. Teal Green | 13. Harvest Gold |
| 4. Lilac | 14. Electric Blue |
| 5. magenta2 | 15. moss green2 |
| 6. Light Lilac | 16. Violet |
| 7. Deep Rose | 17. Dark Fuchsia |
| 8. Salmon Pink | 18. Vermilion |
| 9. Pink | 19. Red |
| 10. flesh pink2 | 20. Reddish Brown |

Ajd206_aljay_bb6x10xls105.pes
3.98x9.56 inches; 28,638 stitches
20 thread changes; 20 colors



- | | |
|-----------------|--------------------|
| 1. Violet | 11. Violet |
| 2. Teal Green | 12. Cream Yellow |
| 3. Moss Green | 13. White |
| 4. flesh pink2 | 14. lilac2 |
| 5. Harvest Gold | 15. Deep Rose |
| 6. sky blue5 | 16. Deep Gold |
| 7. Lilac | 17. electric blue2 |
| 8. Seacrest | 18. Light Lilac |
| 9. Teal Green | 19. Harvest Gold |
| 10. Lilac | 20. Brass |

Ajd206_aljay_bb6x10xls106.pes
4.46x9.84 inches; 30,076 stitches
20 thread changes; 16 colors



- | | |
|----------------|---------------------|
| 1. Leaf Green | 10. Dark Fuchsia |
| 2. sky blue2 | 11. Harvest Gold |
| 3. Lime Green | 12. Yellow |
| 4. Teal Green | 13. sky blue3 |
| 5. Salmon Pink | 14. Deep Gold |
| 6. magenta2 | 15. Light Blue |
| 7. Light Lilac | 16. electric blue2 |
| 8. flesh pink2 | 17. Wisteria Violet |
| 9. Deep Rose | |

Ajd206_aljay_sample.pes
4.16x9.57 inches; 23,428 stitches
17 thread changes; 17 colors