

- 1. Lucen Green (Mar:1221)
- 2. Cedar (Mar:1308)
- 3. Rosewood (Mar:1160)
- 4. Lumber (Mar:1310)
- 5. Summer Citrus (Mar:1007)
- 6. Noon Sun (Mar:1008)
- 7. Golden Dusk (Mar:1009)
- 8. Sandy Orange (Mar:1188)

Aljay-Ms5x7s1001.art
4.62x4.70 inches; 18,744 stitches
8 thread changes; 8 colors



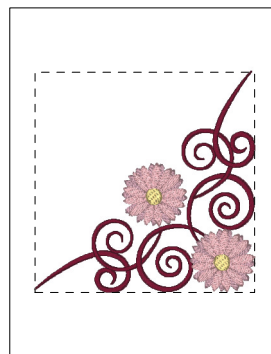
- 1. Windsor Green (Mar:1126)
- 2. Carrot (Mar:1333)
- 3. Flame Tree (Mar:1045)
- 4. Kilkeny Shine (Mar:1120)
- 5. Fauve Red (Mar:1194)
- 6. Carrot (Mar:1333)
- 7. Flame Tree (Mar:1045)

Aljay-Ms5x7s1002.art
4.98x4.88 inches; 22,110 stitches
7 thread changes; 5 colors



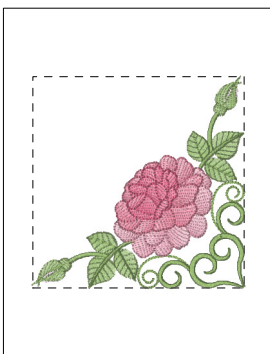
- 1. Arabian Nights (Mar:1154)
- 2. Pasture (Mar:1123)
- 3. Pinkish Hue (Mar:1193)
- 4. Ripe Orange (Mar:1191)

Aljay-Ms5x7s1003.art
4.80x4.80 inches; 12,106 stitches
4 thread changes; 4 colors



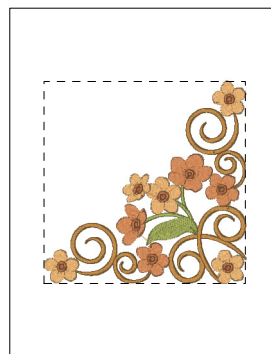
- 1. Burgundy (Mar:1156)
- 2. Crimson Dawn (Mar:1034)
- 3. Copper Salmon (Mar:1033)
- 4. Golden Dusk (Mar:1009)

Aljay-Ms5x7s1004.art
4.97x4.98 inches; 11,394 stitches
4 thread changes; 4 colors



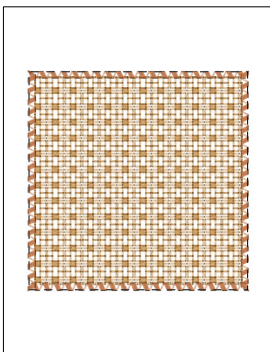
- 1. Lilac Haze (Mar:1192)
- 2. Pasture (Mar:1123)
- 3. Pinkish Mauve (Mar:1023)
- 4. Light Cerise (Mar:1024)
- 5. Cerise (Mar:1025)

Aljay-Ms5x7s1005.art
4.78x4.78 inches; 9,536 stitches
5 thread changes; 5 colors



- 1. Lucen Green (Mar:1221)
- 2. Beechwood (Mar:1187)
- 3. Sandy Gravel (Mar:1131)
- 4. Copper (Mar:1137)
- 5. Copper Dusk (Mar:1138)

Aljay-Ms5x7s1006.art
4.56x4.57 inches; 11,057 stitches
5 thread changes; 5 colors



- 1. Beechwood (Mar:1187)
- 2. Copper Dusk (Mar:1138)

Aljay-Ms5x7s1007.art
4.95x4.93 inches; 6,999 stitches
2 thread changes; 2 colors