



Finished size: 34 cm² (13 ½ in²)

Base: 26 x 10 cm (13 ¼ x 4 in)

Seam allowance throughout: 1 cm (¾ inch)

Technique: Computerised Embroidery, Piecing & Quilting

Skill Rating: 2 Machines

This striking tote has a large external zipped pocket at the back, plus a lined inner pocket patched onto the inner lining. It would make a wonderful gift, on its own, or filled up with treats!

MATERIALS

Quilting fabrics: (Note from color 6 onwards, you can use colors 1 – 4 if you prefer)

| | |
|---|---------------------|
| Color 1 - For border around stitch out | 10 cm (4 inches) |
| Color 2 – Outer side border on front and back | 14cm (5 ½ inches) |
| Color 3 – Front and back bottom border strip | 15 cm (6 inches) |
| Color 4 – Front and back top border strip | 13 cm (5 inches) |
| Color 5 – Back center panel | 33 cm (13 inches) |
| Coloe 6 – Outside pocket lining | 45 cm (18 inches) |
| Color 7 – Straps | 7 cm (2 inches) |
| Color 8 – Straps | 7 cm (2 inches) |
| Color 9 – Inner lined pocket | 26 cm (10 inches) |
| Color 10 – Lining | 42 cm (16 ½ inches) |

Other

| | |
|---|-------------------|
| Interfacing for front & back of bag and strap | 40 cm (16 inches) |
| Two nylon zippers | 45 cm (18 inches) |
| One nylon Zipper for inside pocket | 25 cm (10 inch) |

CUTTING

| | | Units | cm | | in | |
|---|-------|-------|-----|------|--------|--------|
| Sealion Stitch out | | 1 | 18 | 26 | 7 | 10 ¼ |
| | Color | Units | cm | | in | |
| Quilting Fabric: Front | | | | | | |
| Border around stitch out (top & bottom) | 1 | 2 | 4 | 26 | 1 4/7 | 10 ¼ |
| Border around stitch out (sides) | 1 | 2 | 4 | 22 | 1 4/7 | 8 ⅔ |
| Outside Border (side) | 2 | 2 | 6 | 22 | 2 ⅓ | 8 ⅔ |
| Outside Border (bottom) | 3 | 1 | 14 | 38 | 5 ½ | 15 |
| Outside Border (top) | 4 | 1 | 9 | 38 | 3 ½ | 15 |
| | | | | | | |
| Other requirements for front | | | | | | |
| Interfacing | | 1 | 18 | 26 | 7 | 10 ¼ |
| Batting | | 1 | 38 | 40 | 15 | 15 ¾ |
| | | | | | | |
| Quilting Fabric: Back | | | | | | |
| Center Panel | 5 | 1 | 30 | 22 | 11 4/5 | 8 ⅔ |
| Strips on either side of center panel | 2 | 1 | 6 | 22 | 2 ⅓ | 8 ⅔ |
| Strip beneath center panel | 3 | 1 | 14 | 38 | 5 ½ | 15 |
| Strip above zip | 4 | 1 | 38 | 7 | 15 | 2 ¾ |
| Outside pocket lining | 6 | 1 | 38 | 45,5 | 15 | 18 |
| Outside pocket zipper tabs | 2 | 2 | 6 | 8 | 2 ⅓ | 3 1/7 |
| | | | | | 0 | 0 |
| Other requirements for back | | | | | | |
| Batting below zip | | 1 | 38 | 34 | 15 | 13 2/5 |
| Batting above zip | | 1 | 40 | 5 | 15 ¾ | 2 |
| Zipper tabs | 2 | 1 | 7 | 8 | 2 ¾ | 3 1/7 |
| Zipper | | 1 | 40 | | 15 ¾ | 0 |
| | | | | | | |
| Straps | | | | | | |
| Top layer | 7 | 2 | 5 | 76 | 2 | 30 |
| Bottom Layer | 8 | 2 | 5 | 76 | 2 | 30 |
| | | | | | | |
| Inside lined Pocket | | | | | | |
| Front | 9 | 2 | 24 | 15 | 9 ½ | 6 |
| Back | 9 | 2 | 24 | 20 | 9 ½ | 7 ⅞ |
| Zipper | | 1 | 25 | | 9 ⅝ | 0 |
| Zipper tab | 9 | 2 | 5 | 8 | 2 | 3 |
| | | | | | | |
| Finishing off | | | | | | |
| Zipper tabs | 2 | 2 | 6,5 | 5 | 2 ½ | 2 |
| Zipper | 1 | | 40 | | 16 | |
| Lining | | 2 | 38 | 40 | 15 | 15 ¾ |

1. EMBROIDERY

Stitch the sealion AJD198_Aljay_cs6x10s104 from AJD198 Crewel Sea in your 145 x 255 mm (6 x 10 inch) hoop. When the stitching is complete, remove the stabiliser and press face down on a thick towel. Keeping the design centred trim back to 18 x 26 cm (7 x 10 ¼ inches). Apply interfacing to the back.



2. CONSTRUCTION OF FRONT OF BAG

2.1 Inner border around stitch out

Use the 2 color 1 strips measuring 4 x 26 cm (1 4/7 x 10 ¼ inches) to the top and bottom of the stitch out and the 2 color 1 strips measuring 4 x 22 cm (1 4/7 x 8 ⅔ inches) to the sides of the stitch out.



2.2 Outer border around stitch out

Stitch the 2 color 2 strips measuring 6 x 22 cm (1 4/7 x 8 ⅔ inches) to the sides of the stitch out.



Stitch the color 3 strip measuring 14 x 38 cm (5 ½ x 15 inches) to the bottom of the stitch out.



Stitch the color 4 strip measuring 9 x 38 (3 ½ x 15 inches) to the top of the stitch out.



2.3 Adding batting

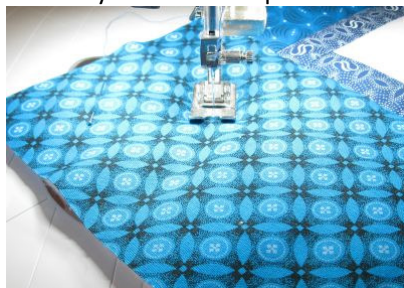
Cut a piece of batting measuring 38 x 40 cm (3 ½ x 15 inches), lay the front of the bag on top of it and pin through both layers.



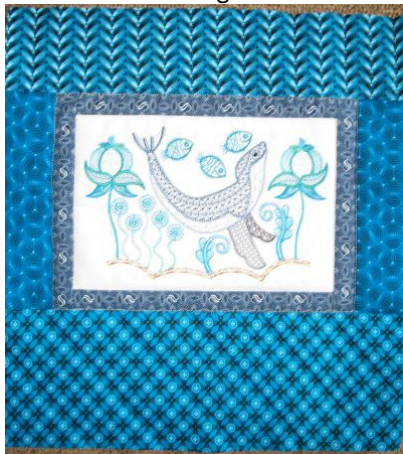
Using matching thread stitch all the way around inside the inner border and then outside the inner border.



At the bottom I stitched diagonally following the pattern of the fabric and at the top I stitched vertically to follow the pattern of the fabric use. You can do whatever suits your fabric best.



The front of the bag is finished and can be set aside while you work on the other components.



3. CONSTRUCTION OF BACK OF BAG

3.1 Portion below the pocket zip

Sew the two side strips measuring 6 x 22 cm (2 ½ x 8 ⅝ inches) to either side of the center panel.



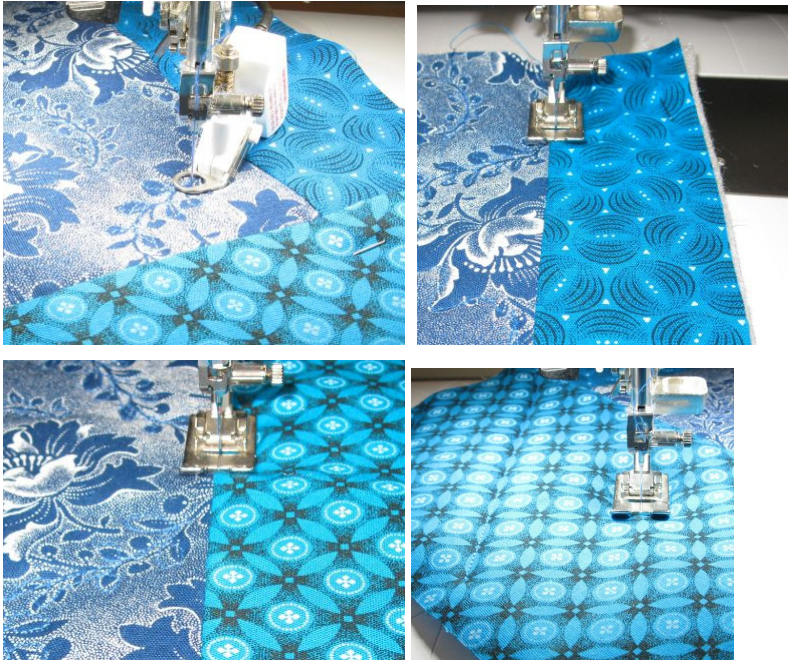
Sew the bottom strip measuring 14 x 38 (5 ½ x 15 inches) to the bottom of the center panel.



Cut batting 38 x 34 cm (15 x 13 2/5 inches). Lay the center panel plus borders over the batting and pin through both layers.

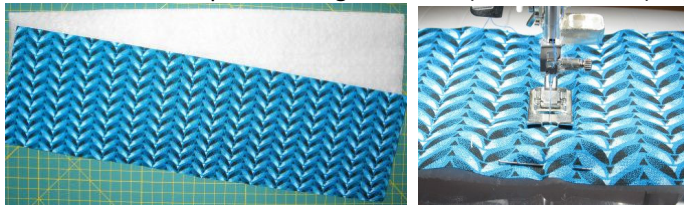


Quilt the fabric and batting together using method best suited to your fabric.



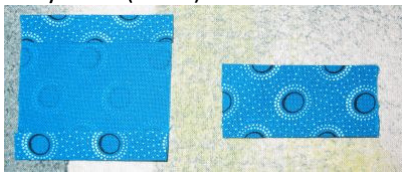
3.2 Portion above pocket zipper

Quilt the fabric strip measuring 38 x 7 cm (15 x 2 ¾ inches) together.

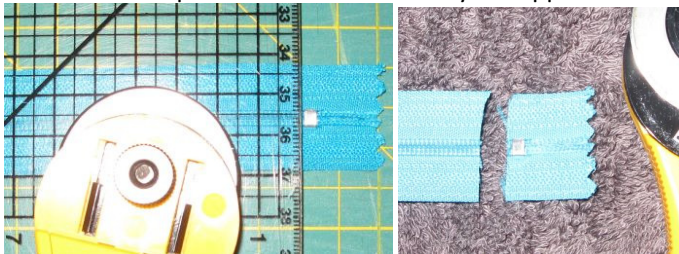


3.3 Preparing and attaching pocket zipper and lining

Prepare two zipper tabs from color 2 fabric measuring 7 x 8 cm (2 ¾ x 3 1/7 inches). Press the edges in by 1 cm (¾ cm). Fold in half so that the 2 folded ends are even.



Slide off the staple at the bottom end of your zipper.



Line the zipper up with the folded-up part of the tab, fold tab in half and stitch. Make sure you catch both the front and the back.



Trim the edges of the tab in line with the zipper.



Lay the zipper on the bottom part of the bag, with the tab level and in line with the right hand side of the bag. Line the other tab up with the left side of the bag and mark the zipper in line with the folded-up part of the tab.



At this point it is important to make sure the zipper slide is on the inside of where you are going to cut. Trim the zipper back to the mark you made.



Place the tab over the zipper, lining the end of the zipper up with the folded over portion of the tab, stitch, and trim tab as before.



You now have a tab at each end of the zipper and the zipper plus tabs should be the same length of as the width of the bottom portion of the bag of the bag.



Make a sandwich with bottom portion of bag back facing up, zipper facing down and pocket lining measuring 38 x 45.5 cm (15 x 18 inches) face down. Pin and stitch on with your zipper foot.



Turn zipper outward with bag on one side and lining on the other, press and top stitch.



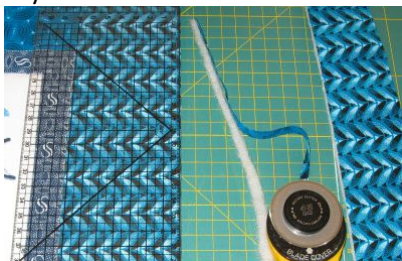
Tack the other end of the pocket lining to the top of the zip.



Lay the bottom half of the back of the bag face up and the top part face down on top of the zipper, pin and stitch. Turn, press and top stitch as before.



Lay the front and the back of the bag together and trim so that they are the same height.



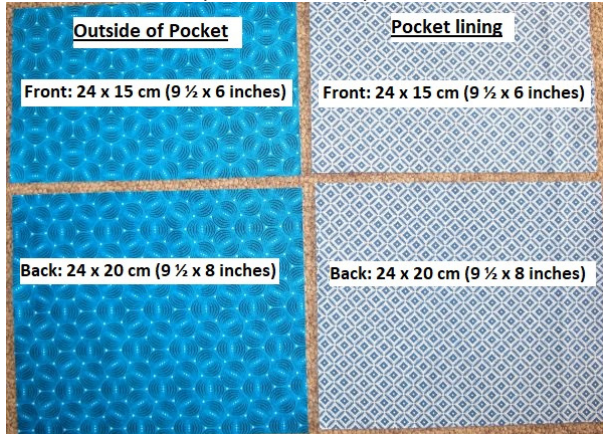
4. CONSTRUCTION OF INNER LINED POCKET

4.1 Lined Patch Pocket: Pieces needed

Cut the 2 pieces required for the outer part of the pocket, and using the same measurement cut the lining pieces. I used a different color for the lining to make it easier for you to see what to do, but I don't recommend this – you should use the same color for both. The measurements are:

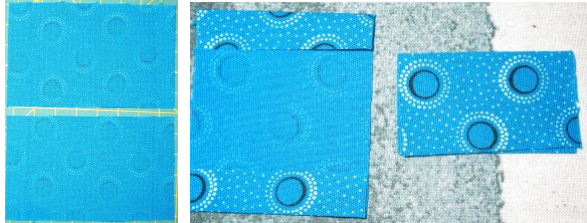
Front: 24 x 15 cm (9 ½ x 6 inches)

Back: 24 x 20 cm (9 ½ x 8 inches)

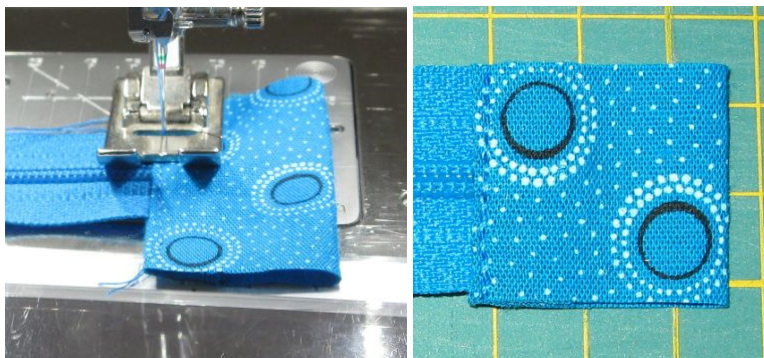
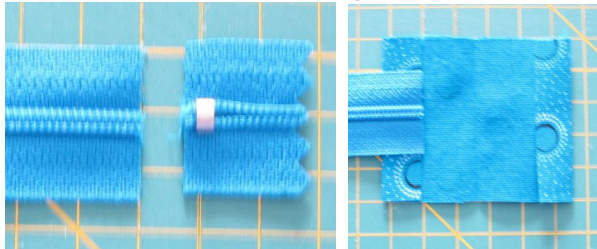


4.2 Preparing pocket zipper

Zipper tabs: Cut 2 tabs 5 x 8 cm (2 x 3 1/7 inches), iron top and bottom in by 1 cm, fold in half and press again.



Cut the zipper staple off. Line the raw edge of the zipper up with the end of the turn-up on the tab. Fold tab over and stitch, making sure to catch front and back. Trim tab in line with zipper.

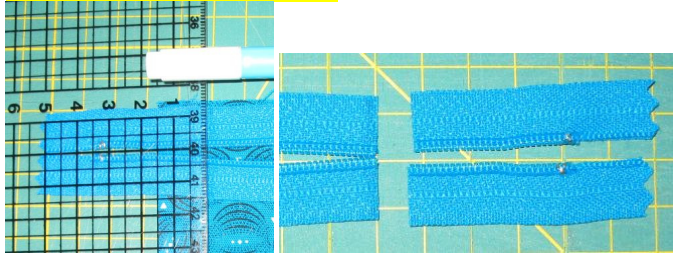


Created by Louise Jackson of ©Aljay Designs

<https://www.oregonpatchworks.com/embroidery/index> • <https://www.oregonpatchworks.com/embroidery/collection/AJD>

email: support@oregonpatchworks.com

Lay the zipper on top of the pocket, with the tab you have just done in line with the right edge of the pocket, and mark 1.5 cm ($\frac{3}{8}$ inches) in from left edge. Cut at the mark you made **making sure you don't cut the zipper slide off!**



Still lining the zipper up as above, place the other tab over the open end of the zipper, and make sure the resulting length of the zipper and tabs will be the same as the pocket width. Sew the tab on and trim excess tab as before.

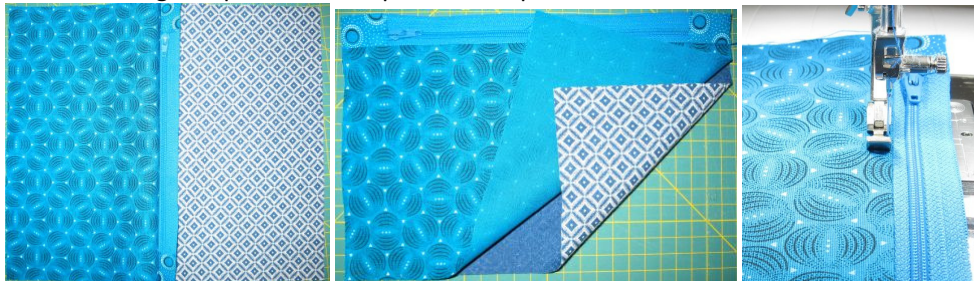


4.3 Inserting the zipper

Make a sandwich with the shorter pocket pieces, starting with the outside pocket face up, zipper face down and pocket lining face down. Pin and stitch the width of your zipper foot. Stop, lift your foot and move the zipper slide if it gets in your way.



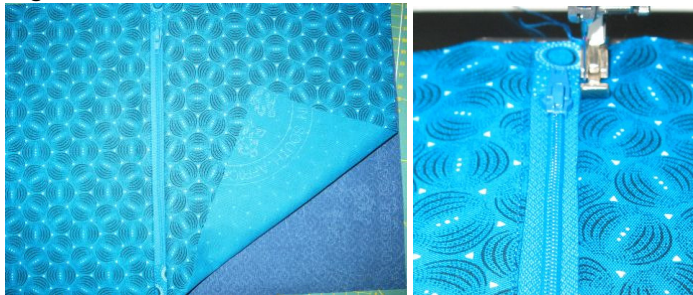
Turn the lining and pocket down, press and top stitch.



Now make another sandwich with the longer pocket pieces lining face up, zipper face up and outside pocket face down. Pin and stitch the width of your zipper foot. Stop, lift your foot and move the zipper slide if it gets in your way.

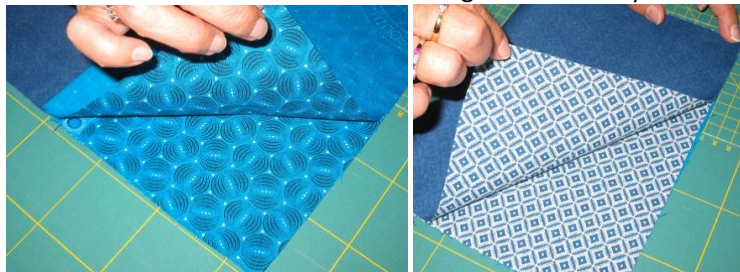


Turn the lining and pocket down, press and top stitch. All the pocket pieces are now joined together.



4.4 Finishing off the pocket

Now fold outside until the two bottom edges meet evenly. Do the same with the pocket lining.



Press a fold line above the zip.



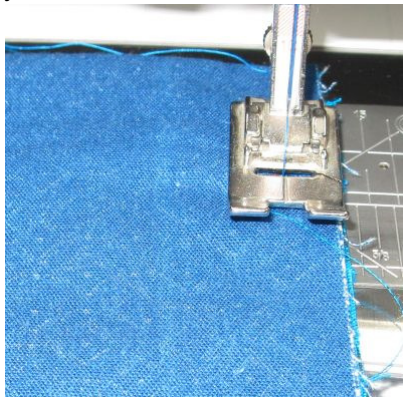
This next section may seem a bit daunting but if you follow the instructions it is not difficult to do, and like magic you will end up with a perfect, fully lined pocket!

Mark the point on either side just below the zip, and pin through all layers up to that point. Make a fold on the lining of 1 cm and press. Stitch through all layers from the top edge to the mark just below the zipper. Press 1 cm turn up at the bottom ends of the pocket lining.

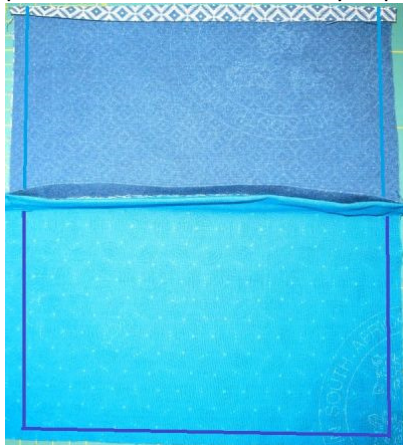
Make sure the zipper is open.



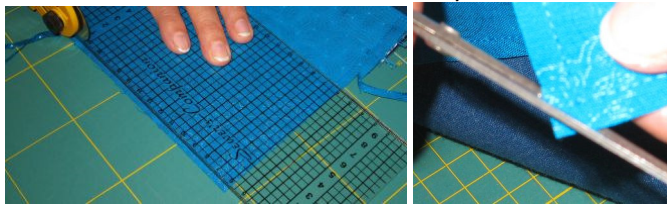
Stitch through all layers from the top edge to the bottom of the zip stitch. The top edge will not be joined.



Then butterfly the pocket open and stitch the remainder all the way around on the outside fabric of pocket. Stitch side seams only of pocket lining.



Trim the seams and corners as much as you can.



Reach in through the zip, grab outside and pull through and sew lining bottom shut.



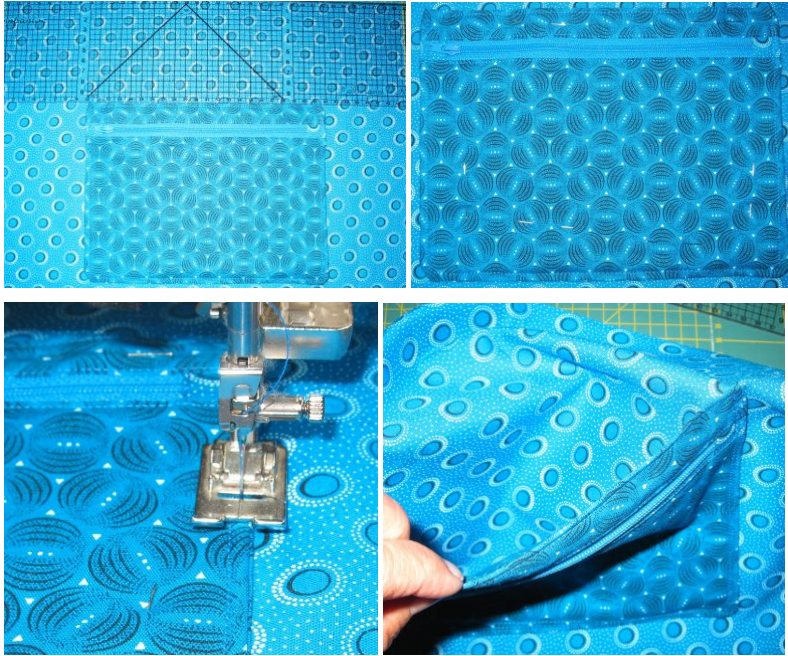
Tuck the lining into the pocket and push all corners into place. Top stitch all the way around.



4.5 Patching pocket onto lining

The front and back lining pieces must be the same as the front and back of the bag, which should be 38 x 40 cm (15 x 15 ¾ inches) unless at some point you had to trim to even up sizes.

Center the pocket on one of the lining pieces, 10 cm (4 inches) down from the top. Stitch sides and bottom all the way round, close to edge, and then a couple of milimeters in, so that you have a double line of stitching. **The top remains open to form a drop in pocket.**



5. **PREPARING AND ATTACHING THE STRAPS**

Cut 4 strips measuring 5 x 76 cm (2 x 30 inches). They can all be from the same color, or you can add a bit of variation by cutting 2 pairs in 2 different colors as I did. Press the edges to meet at the center.



6. **PREPARING AND INSERTING TOP ZIPPER**

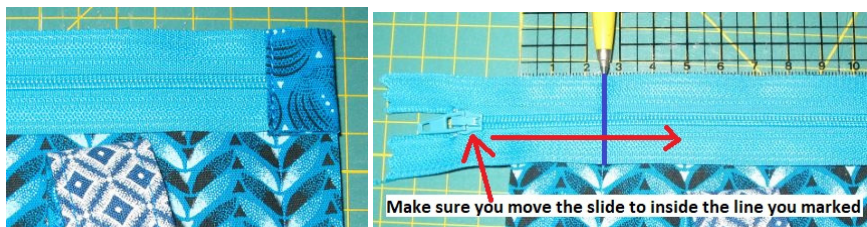
Use the zipper tab strip measuring 6.5 x 5 cm (2 ½ x 2 inches) and press the edges in to meet at the centre. Fold in half lengthways and press again.



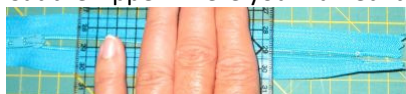
Slice off the staple at the bottom end of your zipper. Fold the tab you made over the end of the zipper and stitch close to the inside edge of the tab, making sure you catch both the front and the back of the tab. Trim the tab edges level with the zipper.



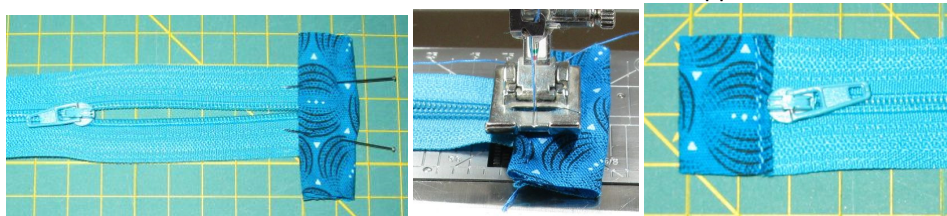
Place the tab you have already done on the right edge of the front of the bag. At the other end, measure 2 ½ cm (1 inch) from the left side edge of the bag.



At this point it is important to make sure the zipper slide is on the inside of where you are going to cut.
Cut the zipper where you marked it.



Use the other tab and sew over the end. Trim level with the zipper as before.



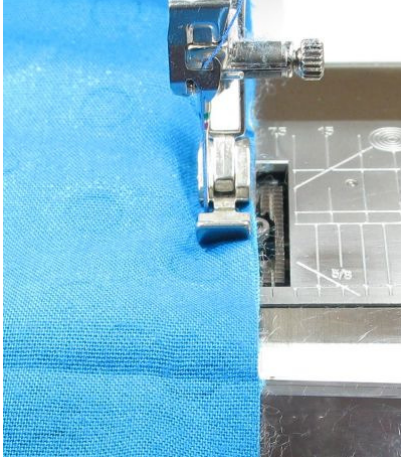
Place the zipper face down on the top of the front of the bag front, centering it so that there is a gap between the zipper tab and the edge of the bag on both sides.



Place lining onto which the inner pocket was patched, wrong side down, on top of the zip and pin through all layers.



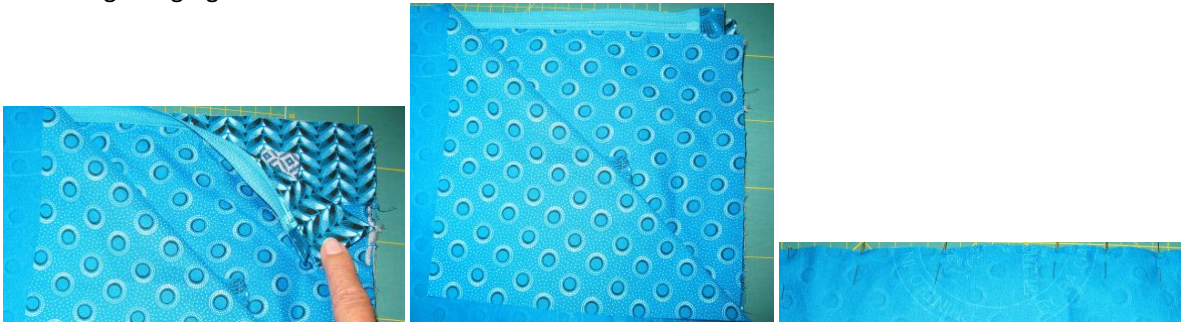
Stitch, keeping your zipper foot even with the outer edge of the zipper.



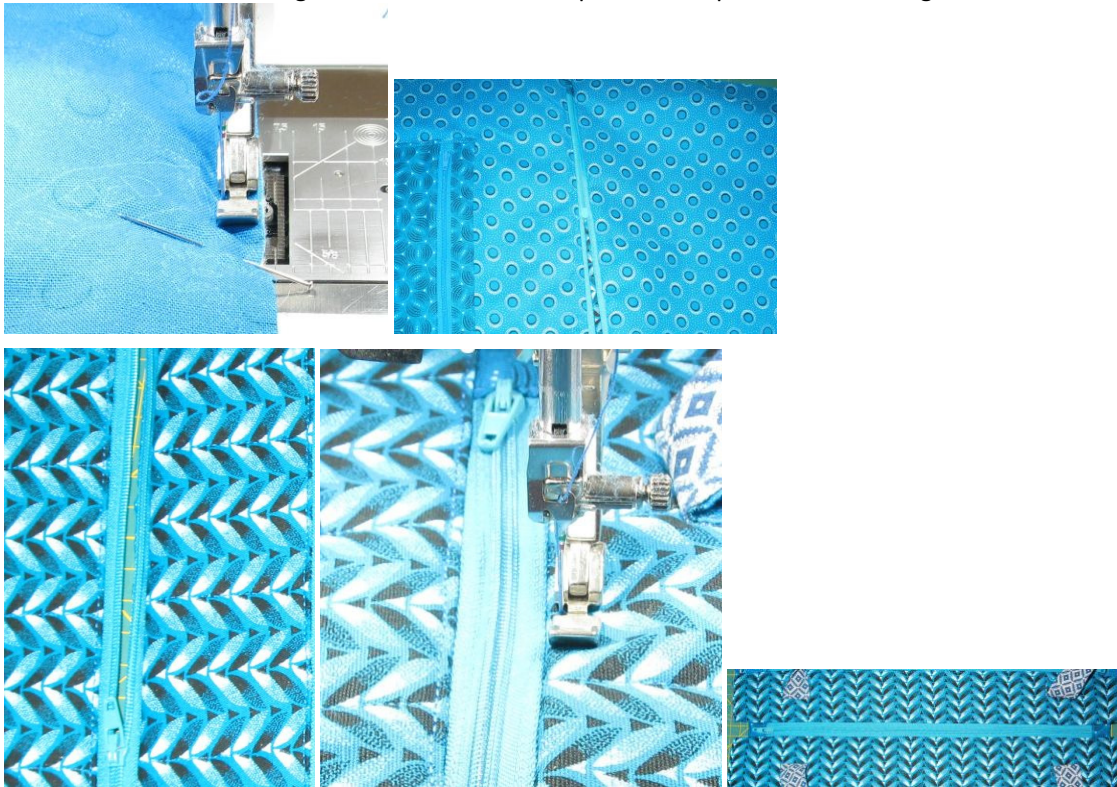
Turn zipper to the right side and turn lining down so that you have the bag front on one side and the lining on the other side. Press and top stitch.



Make a sandwich with the back of the bag, right side up, the front with zip right side down and the remaining lining right side down. Pin.

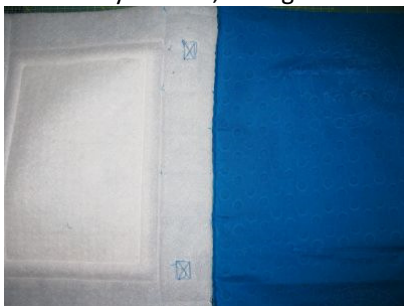


Stitch, keeping your zipper foot even with the outer edge of the zipper repeat the steps as before, stitching the zipper keeping your zipper foot even with the outer edge of the zipper. Turn zipper with back on one side and lining behind it on the inside, press and topstitch close to edge.

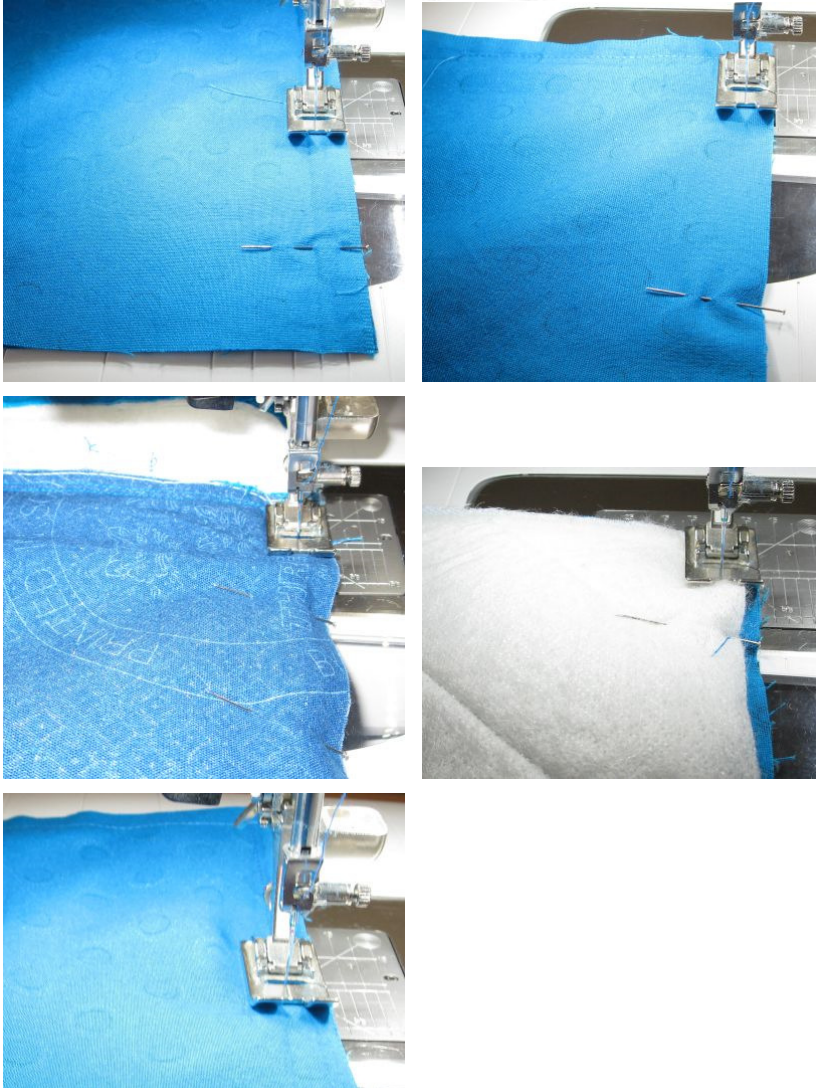


7. STITCHING SIDES AND BOTTOM OF BAG AND LINING

Make sure the top zipper is open and lay the bag with bag on one side and lining on the other side. Pin all the way around, taking care to align the top seam at the zip end.



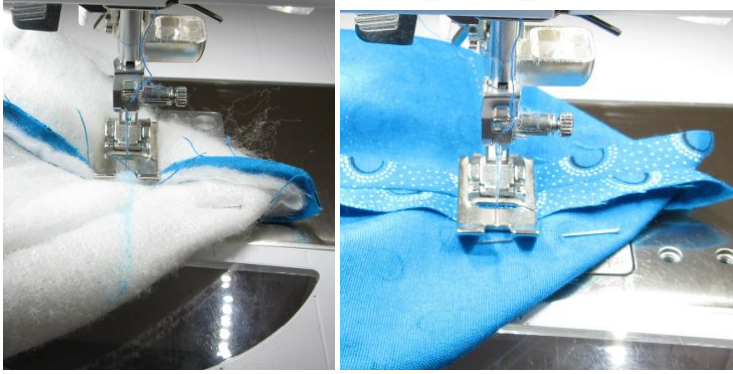
Stitch all the way around the bag and the lining, starting at the bottom of the lining about 6.2 cm (2 ½ inches.) from the one edge of the lining and stopping the same distance from the other edge at the bottom of the lining, so that a gap is left at the bottom of the lining to pull the bag the right way out.



8. **BLOCKING CORNERS AND TURNING RIGHT WAY OUT**

Mark the bottom corners of the bag and lining 5 cm (2 inches) in, stitch and trim corners off.

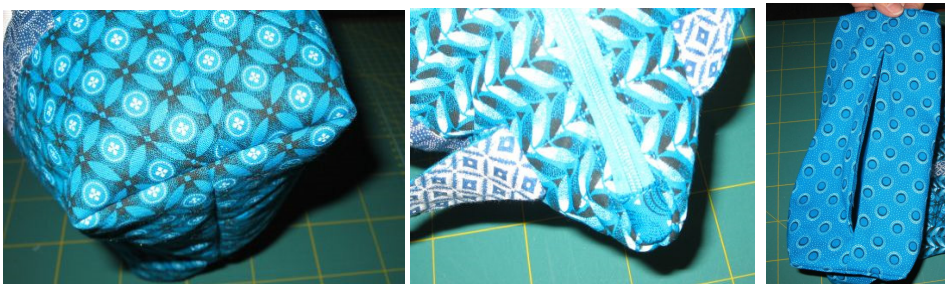




Stick your hand through the lining through the gap you left, through the zipper, grab hold of the top end of the bag and turn the bag the right way out through the lining gap.



Push out the bottom corners of the bag, the corners on either side of the zipper, and the bottom corners of the lining.



Pin the edges of the lining gap together and sew close to edge.



Tuck the lining into the bag and tidy everything up.



Your pretty tot bag is complete!



