



# *From The Needle Of Anne*



*VintageBlues Alphabet*



*4x4 Uppercase Letters A-Z (measuring approx 1 ¾ inches)*

FromTheNeedleOfAnne Designs Copyright  
Anne Chesser 2015

[anne@fromtheneedleofanne.com](mailto:anne@fromtheneedleofanne.com)

<http://www.oregonpatchworks.com/collections.php?id=FTNOA>

*Project Shown For Example Purposes  
Vintage Blues Accents Singles Available Separately; See item FTNOA0348S*



**Set Information and recommendations:**  
**Please read entirely before beginning and then make your own choices.**

- Y Designs were created with Embird
- Y An EDR file is a color palette for Embird users, it is unnecessary for other softwares.
- Y Tested/Sewn on Janome 350/Pfaff C4
- Y Threads: 40 weight embroidery thread used in the upper, bobbin thread used in the bobbin.
- Y Needle: 12 point sharp needle.
- Y Stabilizer: Medium weight tearaway. Stabilize well.
- Y Tested on muslin, though many fabrics suitable.
- Y My projects were embroidered on purchased placemats, napkins & doilies.

**Design Information: 4x4 sizing, measuring approx 1 ¾ inches in height.**  
Colors: Due to file size, color charts are not included.

Please use colors you prefer.

1. Leaf detailing
2. Letter
3. Flower/s
4. Flower Center/s.

(You may skip the flowers center to add a bead or hot fix crystal)



Designs  
Uppercase Letters A-Z

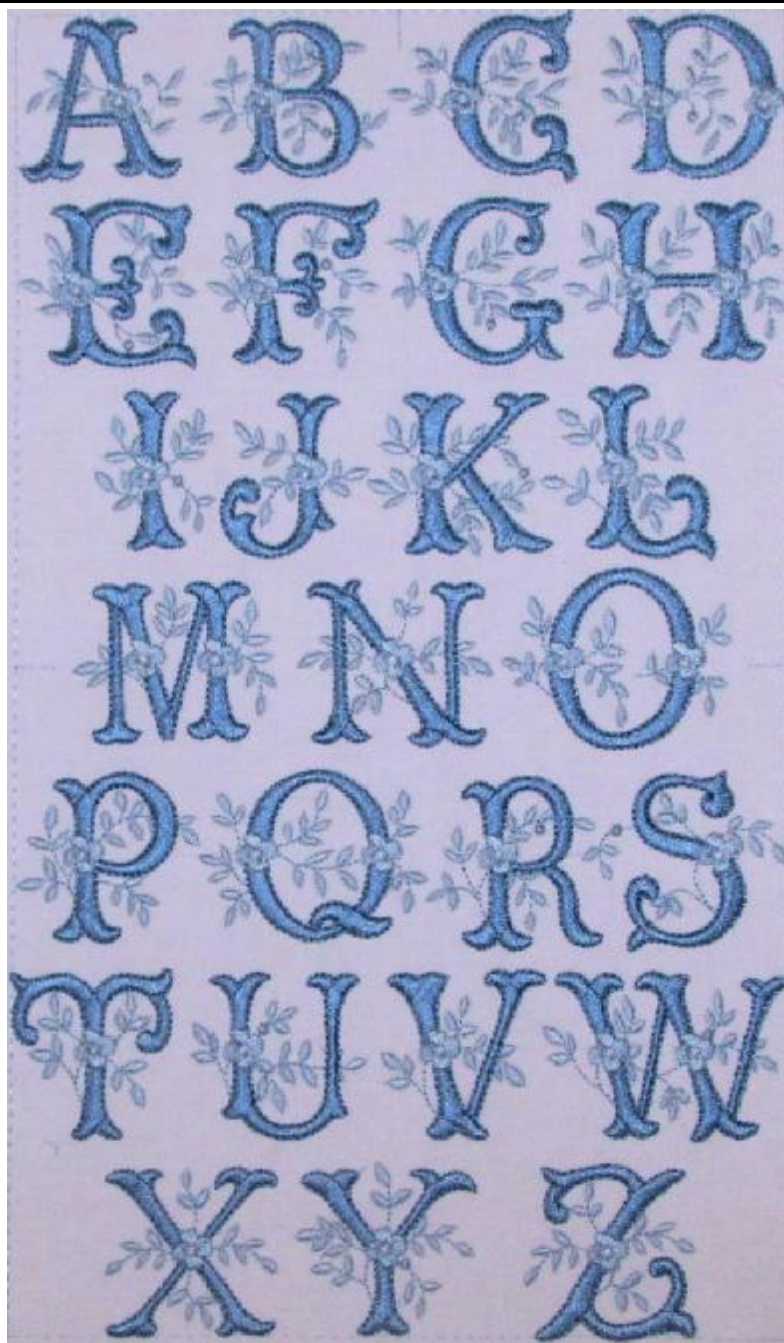


Advanced software users: This collection was digitized with the flowers aligned in the same position from letter to letter.  
Letters may vary a little in size due to their individual scrolling & leafy patterns, use the flower center as a guide to align letters as it may be a better choice than the usual centering option.





## Design Stitch Outs



*Makes Beautiful Placemats & Napkins*



*Enjoy creating your special gift projects!*  
Anne

