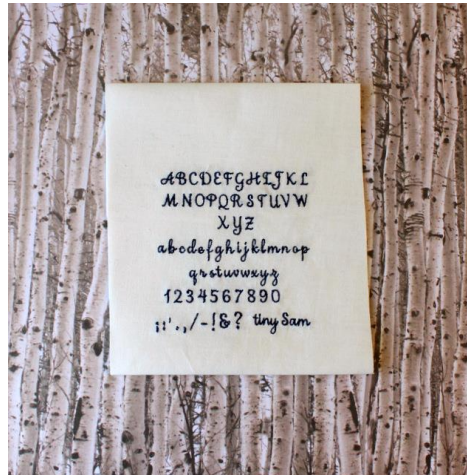




Oma's Place

Machine Embroidery Designs with a Message

OMA-Tiny Samantha Font **Sample**



This is a **sample only** of our Tiny Samantha font. This very small font was entirely digitized manually to ensure perfect start and ending of each letter. Each letter starts on the left and ends on the right. This font should be stitched with a 65/9 or 60/8 needle and with 60 wt thread only. Despite its smallness, this font is very readable and elegant looking.

Font author: Laura Worthington
(extended license purchased)

Design Dimensions and stitch counts:

Capital letter A 0.29x0.28" (7.30x7.10mm)
142 stitches

Lower case a 0.18x0.16" (4.60x4.00mm)
74 stitches

SUPPLIES NEEDED

65/9 or 60/8 embroidery machine needle

60 wt. embroidery thread

Totally Stable (=Iron on, tear away stabilizer)

OR

Fusible Polymesh (=iron on medium weight cut away stabilizer)

Tear away stabilizer (medium weight)

OR

Solvay or Ultra Solvay (water soluble clear plastic type stabilizer)

TIPS

IMPORTANT:

Please note: When I tried to use my automatic threader with the smaller needle, I was not able to do so. I had to manually thread the needle. Please make sure to check in your machine's manual as far as size of needle that can accommodate your needle threader. You could potentially break your threader, if you are using it with the wrong size needle.

1. Be sure to use the right thread and right needle size for optimal stitchout.
2. **To prevent puckers** with any font, stabilize your fabric. My testers and I have found that Totally Stable is a great product to prevent puckering of fabric. (I used Sulky's Totally Stable.)
Lightly iron it to the back of your fabric and then hoop the stabilized item. I did not use any other stabilizer but you may find you want to use an additional stabilizer in your hoop.
3. Don't have Totally Stable? You can also use **fusible Polymesh** instead of the Totally Stable. You do need

an additional stabilizer underneath the item you embroider. Choose either medium weight tear away or one layer of Super Solvy (see through water soluble stabilizer).

4. I suspect that using a light weight **fusible interfacing** instead of the fusible polymesh might work, too, but I have not tried this method myself.
5. I personally prefer **not to hoop** the item to be embroidered but to tack it down with a basting frame. (Embroidery experts will tell you though that the hooping of fabric and stabilizer will produce the best outcome.)

I have also been known to apply temporary embroidery adhesive spray to the top of my stabilizer, then place the item to be embroidered on top of it and secure it with straight pins placed along the inside perimeter for the hoop.

IF you use this method, you **must**, of course, be **absolutely sure** that the straight pins are out of the way of your embroidery needle.

6. Wondering what are the **advantages of each stabilizing method?**

-Totally Stable vs Fusible Polymesh

Totally Stable tears away very cleanly and easily leaving almost no residue behind.

Excellent for items where you will see the back - like handkerchiefs.

In addition, you do not need another stabilizer underneath the Totally Stable.

Fusible Polymesh works equally well in preventing puckers but cannot be fully removed.

You can remove it up to the embroidery but not underneath the embroidery.

-Medium Tear Away vs 2 layers of Solvy or 1 layer of Ultra Solvy

Both of these stabilizers tear away easily.

The paper **medium weight tear away** leaves a bit harsher feel to the lettering.

The Solvy tears away almost completely from underneath the lettering. You really don't need to rinse it off with water.

The lettering has a softer feel to it.

7. Some sewing experts recommend **slowing down** the machine when stitching small lettering. My testers and I actually found that that was not necessary. But if you are not completely happy with your stitchout, you might want to try slowing down your machine to see if that improves the stitchout for you on your particular machine.

I highly recommend that you do some testing with the stabilizers, fabric of your choice, and font before doing your actual project. I am confident that you will find that the lettering stitches smoothly and without puckers if you use one of these above methods.