

JHB242 Freebie

Thank you so much for downloading this freebie. I am sure you are going to have lots of fun with it. You can make little bowls, coasters, runners, place mats or where ever your imagination takes you!

Although I am giving you the colors I have used, you are by no means obliged to use those colors. I will however advise that your last satin stitch outline must be the same color otherwise you might find that when you join your little daisies with the sewing machine that the one side will show the clash in color. If you however join them by hand, you can do it from the back and nobody will see your join stitches. Almost like a granny square blanket!

The center of each flower is done in fabric and batting and the petals are done in free standing lace.

Requirements

Avalon Plus – water soluble vilene (not the plastic one, stitch count are to high and the stabilizer will split.

Threads of your choice – top and bobbin thread must match with each color change

fabric for your center

compressed or quilters batting for your centers (scraps comes in very handy here as you are only using small pieces.

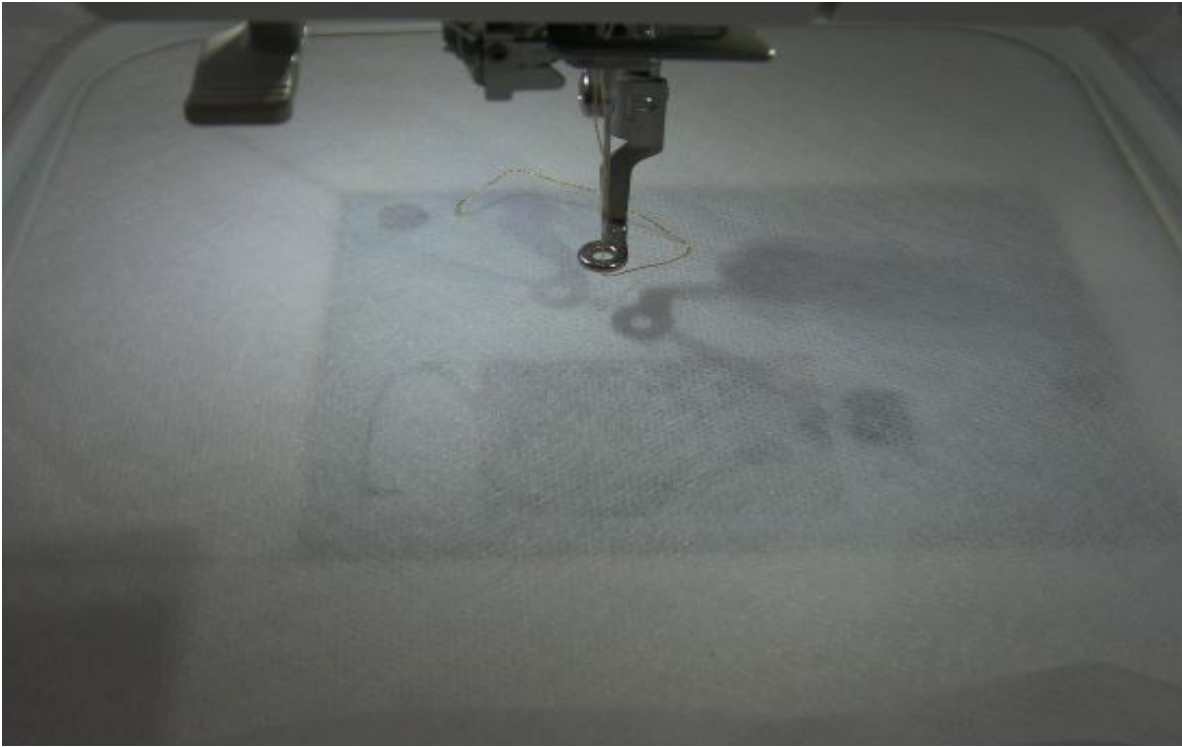
The colors in the pictures may be different to what the freebie colors are as I am using the procedure for the actual set, but the principle remains the same.

I have used Marathon thread color 1002 – pale yellow for the petals and satin stitch outline, 1081 – dark lilac for the center and 1278 – bright blue, for the little hearts on the petals

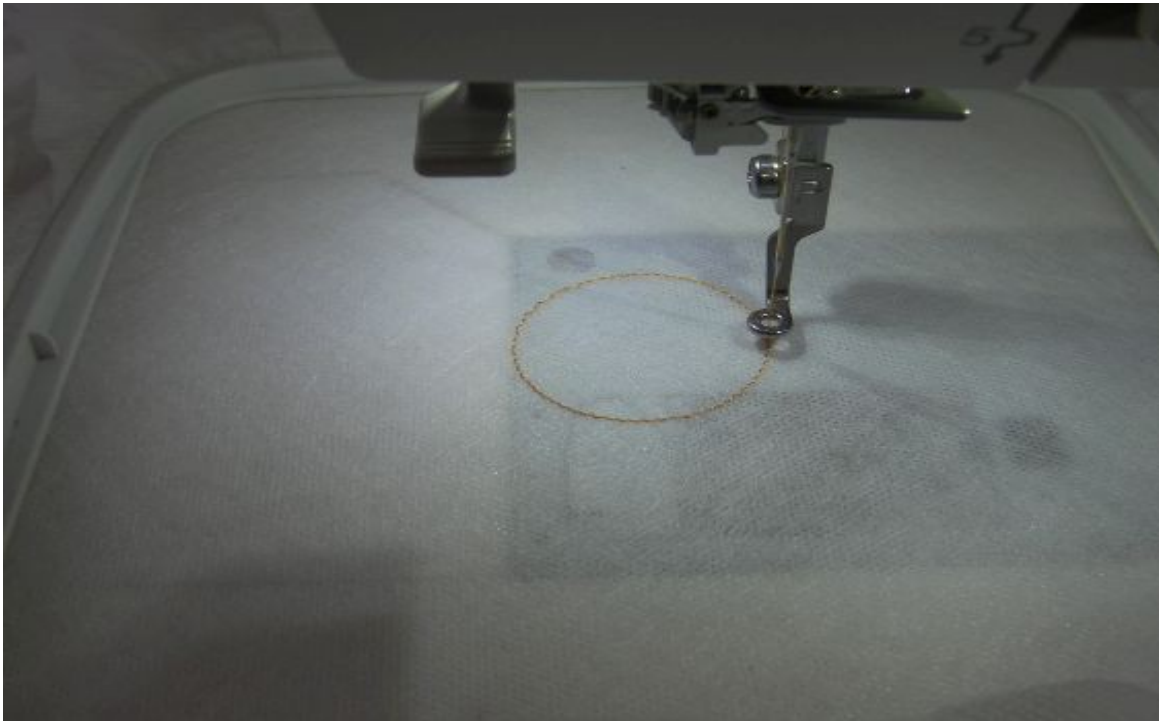
The procedure for this little baby is quite easy.

Hoop up a double layer of Avalon Plus, cross hatched.

Thread up your machine with the color you are going to do the center of the design in, mine was 1081, matching top and bobbin thread.



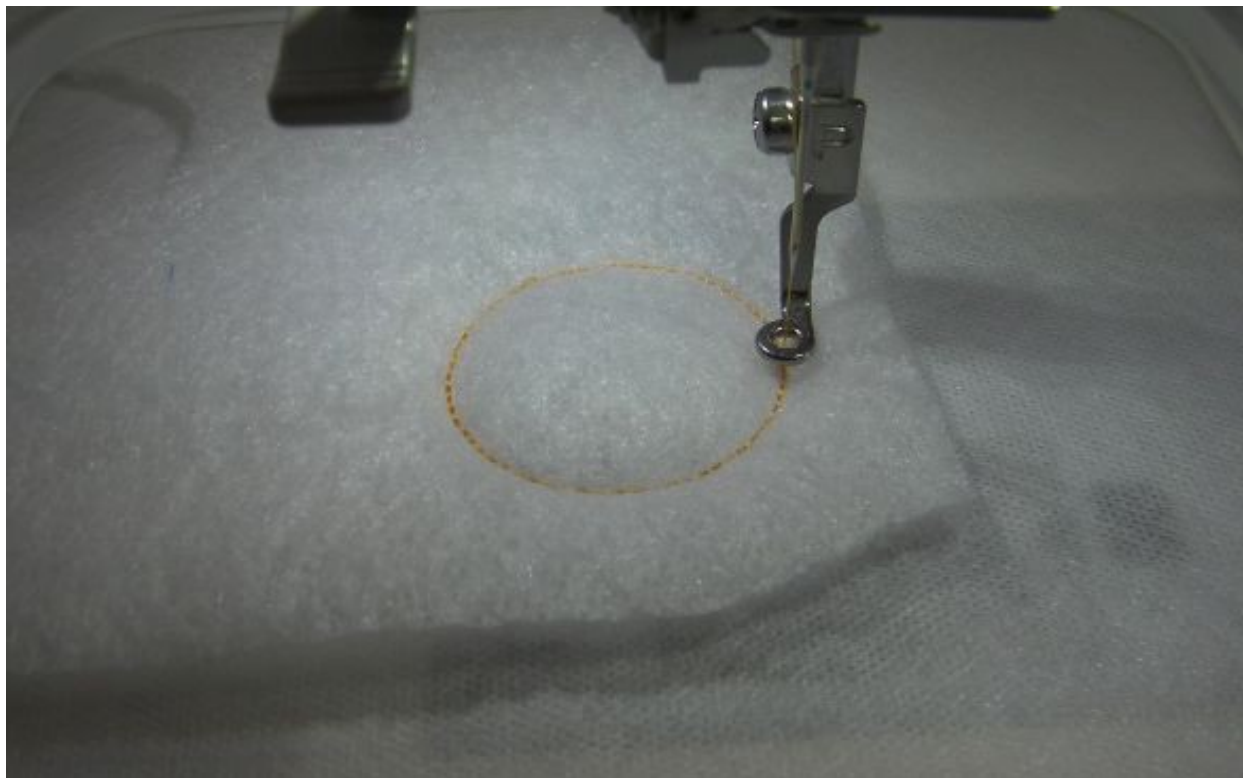
Stitch the first color line directly onto your stabilizer.



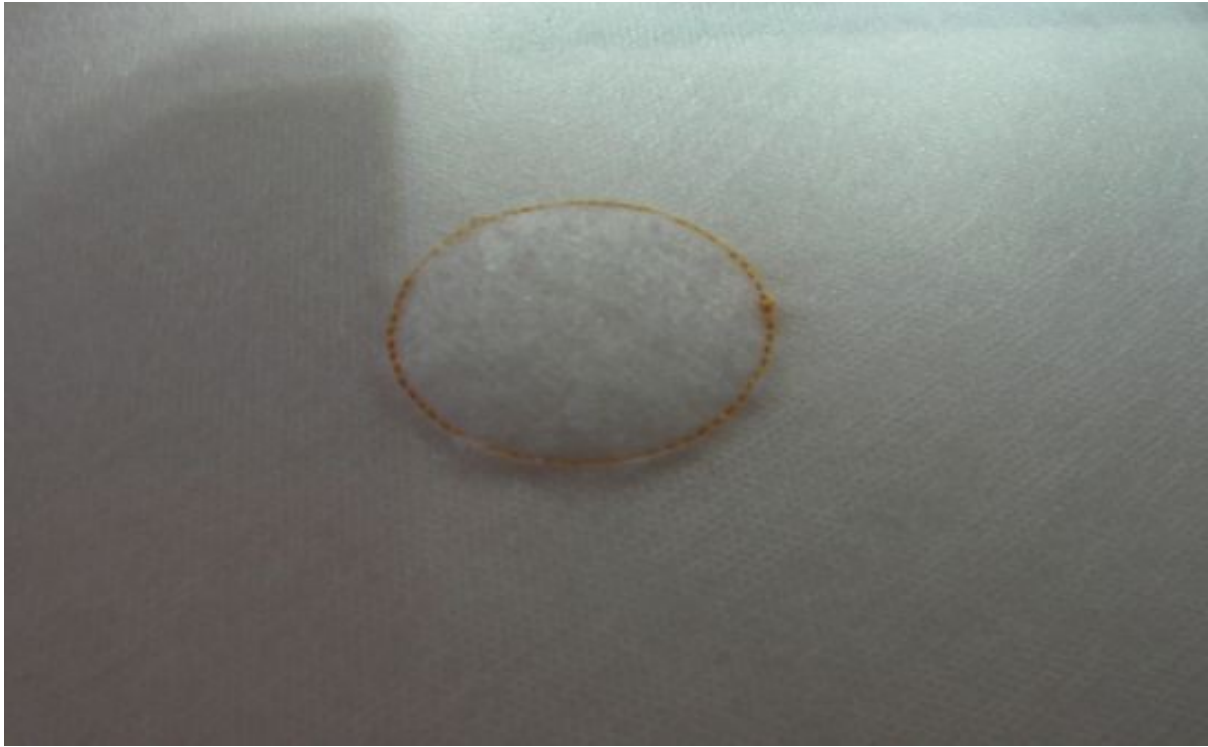
Float your batting over the placement line.



Secure with the next color line.



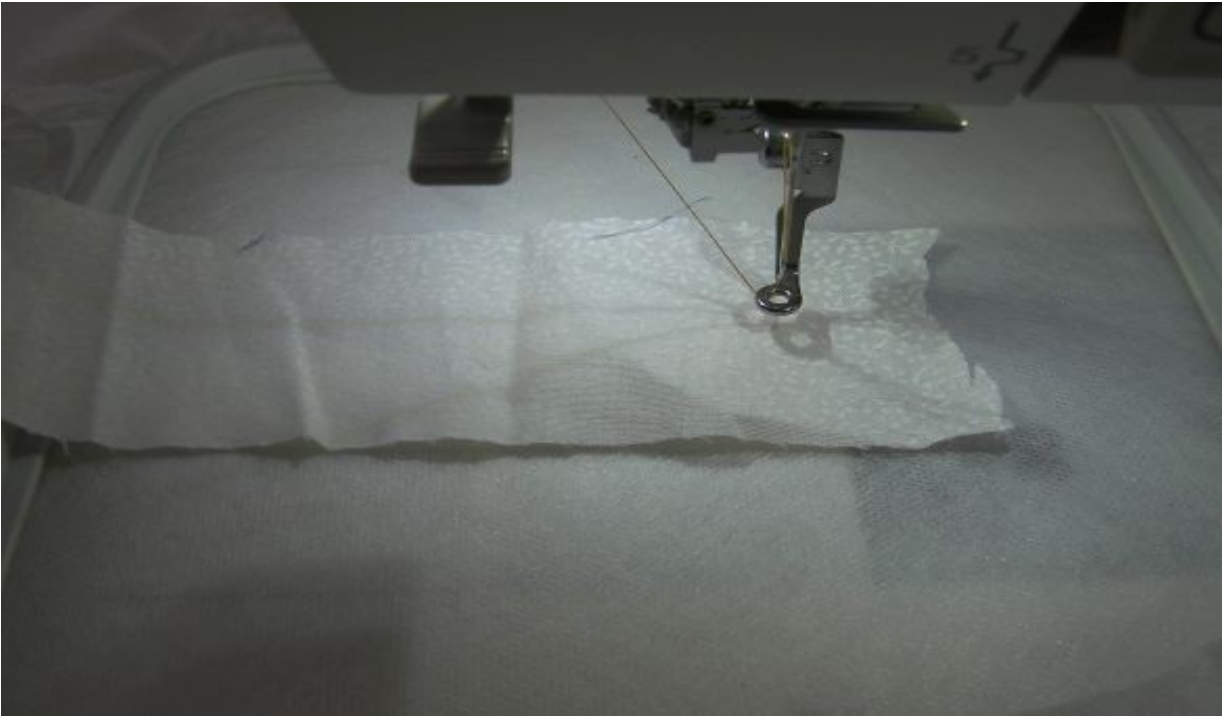
Remove hoop from the machine, but not the design out of the hoop, and cut away the excess batting close to the run stitch line.



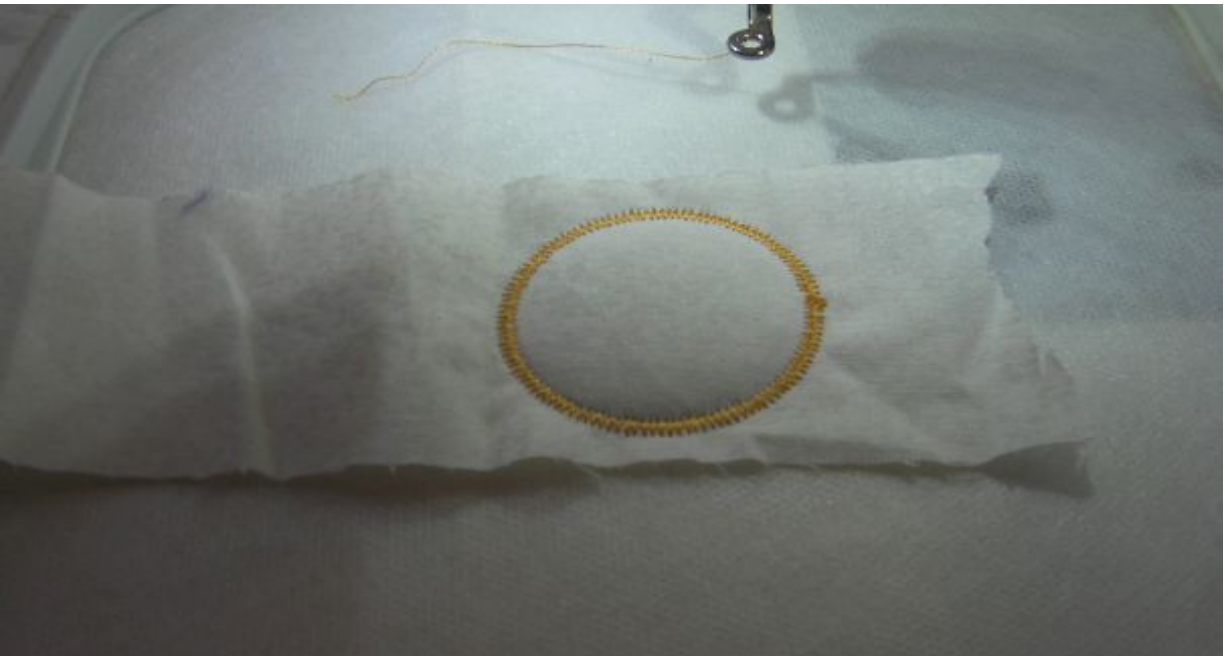
Float your lining fabric underneath the hoop, right side facing down. You can pin it in place from the top of the hoop if you so wish.



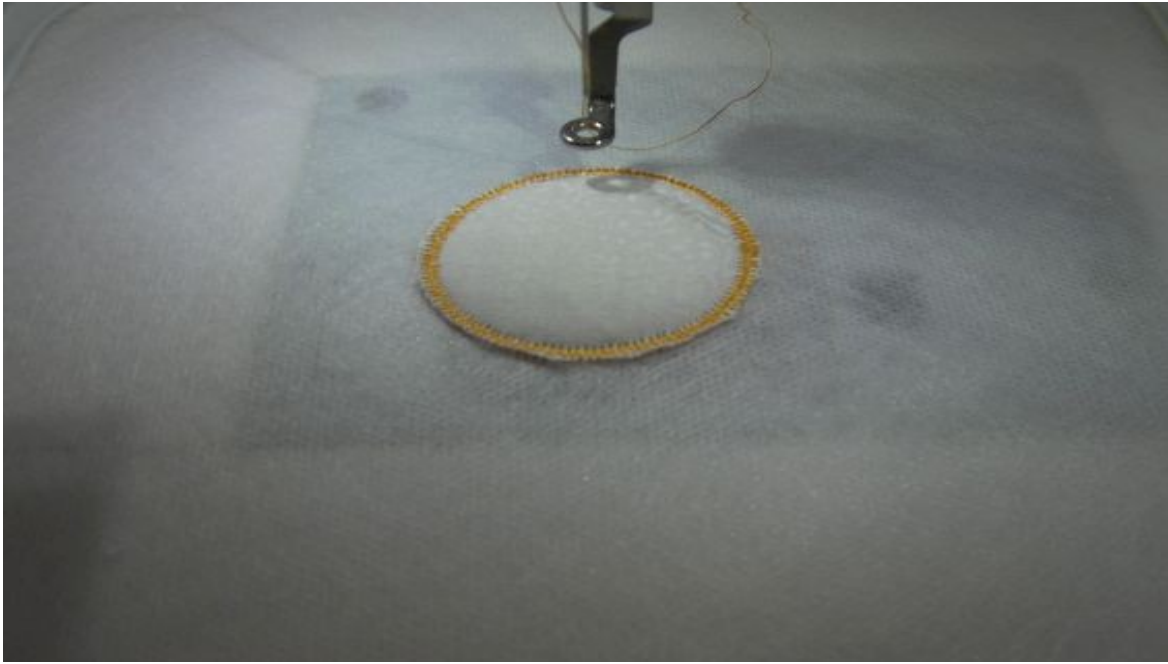
At the same time float your top fabric on top of the hoop, right side facing up.



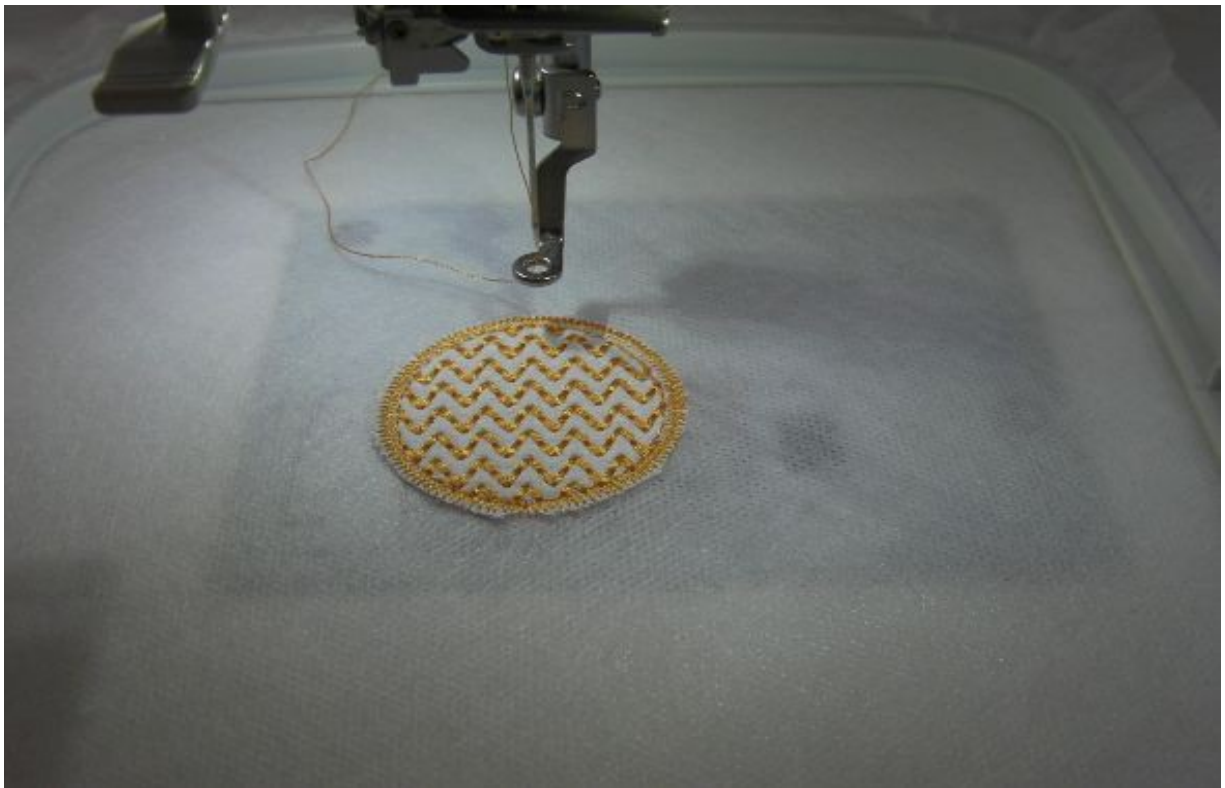
Secure with the next color line. This is a run stitch line and a zigzag line.



Remove hoop from the machine, but not the design out of the hoop, cut away the excess fabric close to the zigzag line on top as well as underneath the hoop.



Stitch the inside detail of the center of the flower.



Change your top and bobbin thread to the color you wish to do your flower petals in. Here I used Marathon thread color number 1002. Slow your machine down here to get the maximum stitch length and stitch the petals. Once the petals are done, stitch the little hearts, which I did in 1278, then go back to 1081 to finish the center circle.

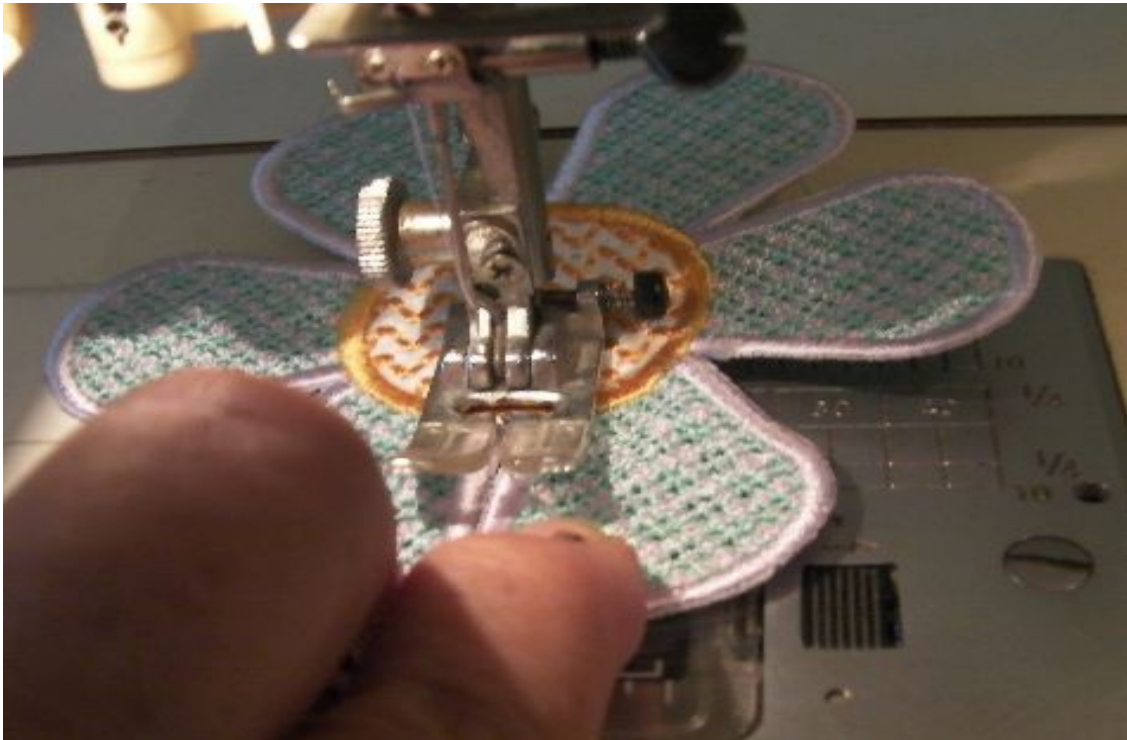
Make as many as you need for your project, but do not wash any of the flowers until your whole project is done.

To sew them together is quite easy. Again I am giving you the pictures from the actual set. Who knows, you might like them so much that you want to buy the whole set LOL!

To make the little bowl.

The design may vary but the procedure is the same.

You can either keep your little flowers flat and use them as coasters, or sew a lot together for a runner, or you can pull the petals together and with a small zigzag sew them together to just below where the curve of the top part of the petal start. If you are going to make little bowls, do not wash your stabilizer out until you have finished sewing them together. Match your top and bobbin thread on your normal sewing machine. Set your machine on zigzag – stitch width 3.5 and stitch length on 1. Here you need to decide what is the easiest for you, starting from the middle going out



or going from the outside to the middle.



I personally find the second option works easier for me, but hey, we are all different. Because these little beauties has not been washed at this stage, you can still push and pull them quite easily to get the sides of the petals together as you go around.

Once you have got all the petals sewed together, you can then wash your stabilizer out, mold them to your desired shape and let them dry.

To make runners, place mats doily's

Do not wash any of your flowers until you have finished your project.

Thread up your sewing machine with the color you have done your satin stitch outline in, matching the top and bobbin thread.

Set your machine on zigzag, I set mine at 5 in width and .50 in length.

I first did a lay out of my flowers on how I want them to be in the finished project. Take the first two flowers and butt join them and zigzag together.



Keep going this way until you have joined all your flowers together the way you want them to be. Once you have completed your project, wash out your stabilizer, dry flat and press lightly on the reverse.

FOR MORE WONDERFUL DESIGNS VISIT US AGAIN SOON AT OREGONPATCHWORKS PREMIUM EMBROIDERY DESIGNS MALL The OPW Mall – Where your dreams become a reality, one stitch at a time.

We hope to serve you again soon.

Feel free to contact us at any time.
support@oregonpatchworks.com
www.oregonpatchworks.com

JHB CREATIONS LINK

<http://www.oregonpatchworks.com/collections.php?id=JHB>

Enjoy!

Kind regards
Helena