

# From The Needle Of: Anne Alphabet Edwardian

## Set Information and recommendations:

*Please read entirely before beginning.*

- Designs were created with Embird and were sewn on Janome 350/Jef
- EDR files are not sewing files. It is the color palette for Embird users and are unnecessary otherwise.
- Set requires fabric and stabilizer. Letters tested with either 2 layers of wss or a cutaway stabilizer depending on project use.
- 12 point needle used
- thread recommendations: 40 weight and bobbin thread or the same in the bobbin depending on color choices.
- Resizing: designs should be able to be enlarged some, but not decreased in size., although not tested in another size, you are encouraged to make your own test stitch out for that.
- Slow machine down if necessary.
- Tip: It is recommended that you clean your bobbin area and replace your needle often. Start with a fresh needle and change as often as necessary.

## Design Information:

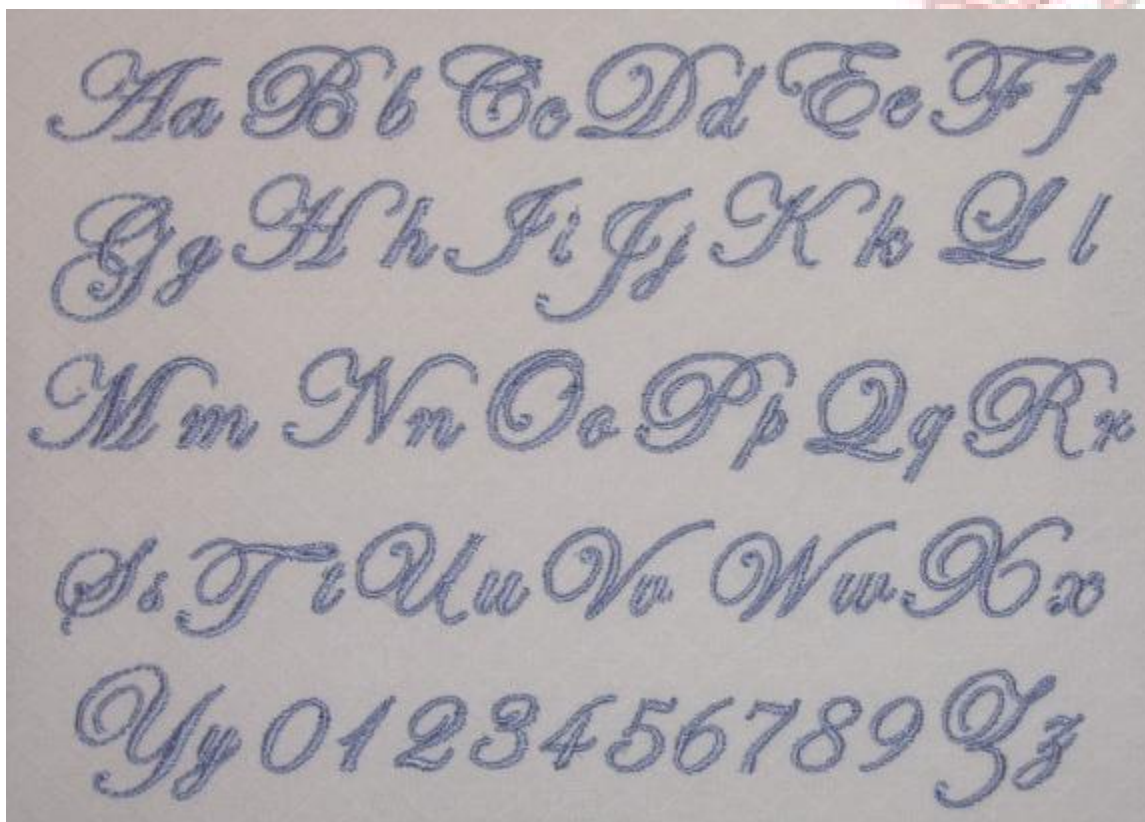
Based on the capital letter A: 30.0 x 17.7mm

Based on the lower letter a: 9.8 x 7.5 mm

Ideal for personalizing many items such as handkerchiefs

This alphabet coordinates in sizing with the 'for baby' and 'loss' set.





*Purchasing my design sets allows you to use these items for personal use or on finished items for sale.*

*The design, samples or images may not be sold or given away or posted on any other site.*

*Designs copyright to Anne Chessier 2007-2009*

*You may stitch these designs in any colors you like. If you have any questions, feel free to ask.*

*If you are sharing your finished photo project, please let me know if you are an Embroidery Connect yahoo group member or OPW member, so I can also add or send those in for you!*

*Thank you! Enjoy your projects!!*

*<http://www.oregonpatchworks.com/collections.php?id=FTNOA>*